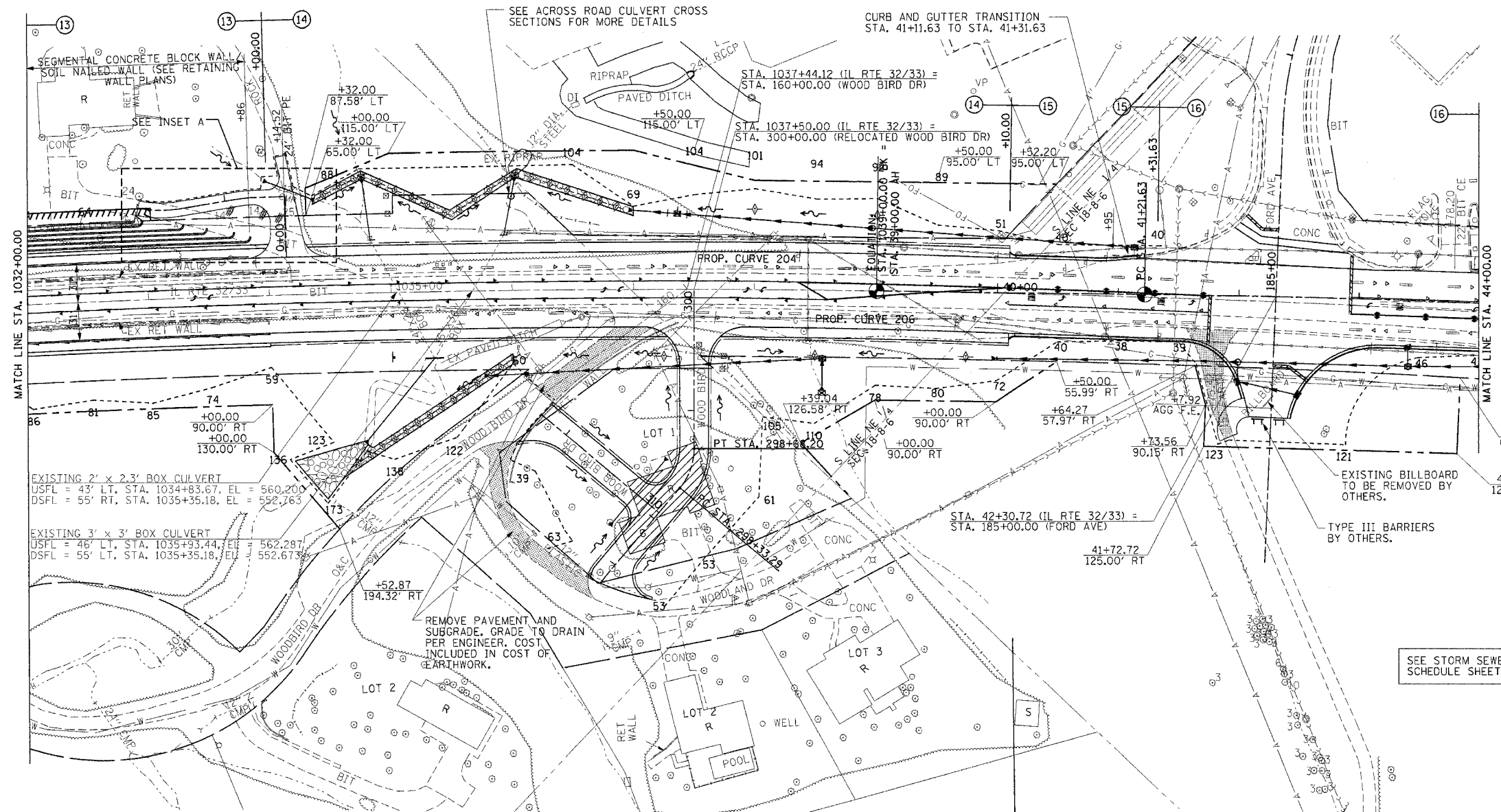
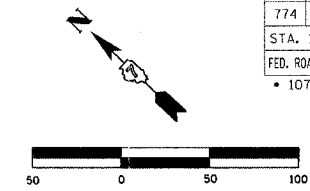


F.A.P. RTE.	SECTION	COUNTY	TOTAL SHEETS	SHEET NO.
774		EFFINGHAM	344	79

STA. 1032+00.00 TO STA. 44+00.00
 FED. ROAD DIST. NO. 7 ILLINOIS FED. AID PROJECT
 • 107WRS-1, 107BY, 107BY-1 & 107B-2
CONTRACT NO. 94827

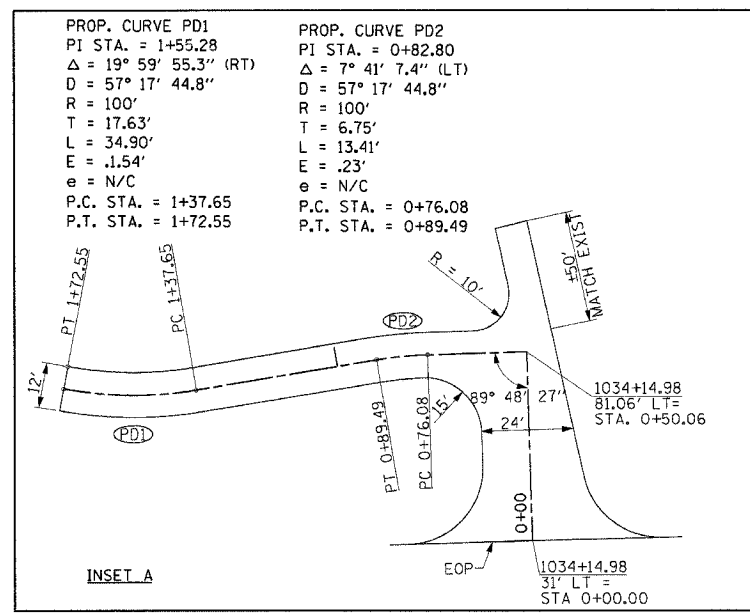


- BUILDING REMOVAL NO. 1**
RT STA. 1037+00.00 1 L SUM
- PERMANENT SURVEY MARKERS, TYPE I**
PT STA. 1039+00.00 1 EACH
PC STA. 41+21.63 1 EACH
TOTAL 2 EACH
- RETAINING WALL REMOVAL**
LT STA. 1032+00.00 - STA. 1034+17.00 725 SQ FT
RT STA. 1032+00.00 - STA. 1033+99.00 665 SQ FT
RT STA. 158+88.19 - STA. 159+77.78 515 SQ FT
TOTAL 1905 SQ FT
- CONCRETE GUTTER, TYPE A**
LT STA. 1032+00.00 - STA. 1034+00.00 200'
RT STA. 1032+00.00 - STA. 1034+00.00 200'
TOTAL 400'
- COMBINATION CONCRETE CURB AND GUTTER, TYPE B-6.24**
LT STA. 40+10.00 - STA. 41+31.63 122'
RT STA. 40+10.00 - STA. 41+31.63 122'
RT STA. 41+31.63 - STA. 41+50.00 18'
RT STA. 43+56.71 - STA. 44+00.00 43'
LT STA. 184+16.00 - STA. 184+65.00 83'
RT STA. 184+00.00 - STA. 184+65.00 144'
TOTAL 532'
- PAVED DITCH REMOVAL**
RT STA. 1035+40.25 - STA. 1036+41.26 101'
- COMBINATION CURB AND GUTTER REMOVAL**
LT STA. 40+95.00 - STA. 41+31.63 37'
RT STA. 41+03.79 - STA. 44+00.00 296'
TOTAL 333'
- GUTTER OUTLET REMOVAL**
RT STA. 40+88.77 - STA. 41+03.79 1 EACH
- ISLAND PAVEMENT REMOVAL AND REPLACEMENT**
LT STA. 42+04.53 - STA. 42+17.16 97 SQ FT
- MEDIAN REMOVAL PARTIAL DEPTH**
STA. 43+16.00 - STA. 44+00.00 346 SQ FT
- PCBC 4'x3' EXTENSION (CULVERT NO. 3)**
STA. 1034+79.00
LENGTH = 85' RT
DSFL = 121' RT, EL = 551.40
(SEE SHEET 139 FOR CONCRETE COLLAR DETAILS)
- BOX CULVERT END SECTION, CULVERT NO. 3**
RT STA. 1034+79.00 1 EACH
- PIPE UNDERDRAIN REMOVAL**
RT STA. 1032+00.00 - STA. 1034+62.00 262'
- PIPE UNDERDRAINS FABRIC LINED TRENCH, 6"**
LT STA. 1032+00.00 - STA. 1033+85.00 185'
RT STA. 1032+00.00 - STA. 1034+00.00 200'
TOTAL 385'
- PCBC 2'x2' EXTENSION (CULVERT NO. 4)**
STA. 1034+78.00
LENGTH = 45' LT
USFL = 90' LT, EL = 567.50
- BOX CULVERT END SECTION, CULVERT NO. 4**
LT STA. 1034+81.00 1 EACH
- PCBC 3'x3' EXTENSION (CULVERT NO. 5)**
STA. 1036+00.00
LENGTH = 30' LT
USFL = 75' LT, EL = 560.00
- MH, TA, 6' DIA, TIF, CL**
STA. 1036+00.00, 78' LT
TOP OF LID EL = 573.00
- PIPE CULVERTS, CLASS A, TYPE 1, 36"**
LENGTH = 12'
USFL = 90' LT, STA. 1036+00.00, EL = 570.20
DSFL = 78' LT, STA. 1035+98.29, EL = 570.00
1 EACH, PRC FLARED END SECTION, 36"
- STORM SEWER TO BE FILLED**
RT STA. 1036+44.26 - STA. 39+67.38 37.6 CU YDS
LT STA. 1035+96.30 - STA. 39+22.58 38.4 CU YDS
LT & RT STA. 1038+43.86 - STA. 1038+44.28 5.4 CU YDS
LT & RT STA. 1038+43.86 - STA. 39+86.99 10.8 CU YDS
LT STA. 39+22.58 - STA. 41+12.80 22.3 CU YDS
TOTAL 114.5 CU YDS

SEE STORM SEWER SCHEDULE SHEET 27

PLAN	DATE
BY: _____	DATE: _____
NO. _____	

PROFILE	DATE
BY: _____	DATE: _____
NO. _____	



- PROP. CURVE PD1**
PI STA. = 1+55.28
 $\Delta = 19^\circ 59' 55.3''$ (RT)
D = 57' 17" 44.8"
R = 100'
T = 17.63'
L = 34.90'
E = .154'
e = N/C
P.C. STA. = 1+37.65
P.T. STA. = 1+72.55
- PROP. CURVE PD2**
PI STA. = 0+82.80
 $\Delta = 7^\circ 41' 7.4''$ (LT)
D = 57' 17" 44.8"
R = 100'
T = 6.75'
L = 13.41'
E = .23'
e = N/C
P.C. STA. = 0+76.08
P.T. STA. = 0+89.49
- PROP. CURVE 204**
PI STA. = 1038+75.89 31.34' LT
 $\Delta = 1^\circ 49' 59''$ (RT)
D = 0° 53' 48"
R = 6,389.96'
T = 102.23'
L = 204.43'
E = 0.82'
P.C. STA. = 1037+88.27 31.00' LT
P.T. STA. = 39+63.67 29.59' LT
- PROP. CURVE 206**
PI STA. = 1038+77.43 30.71' RT
 $\Delta = 1^\circ 38' 23''$ (RT)
D = 0° 57' 54"
R = 5,938.00'
T = 84.98'
L = 169.95'
E = 0.61'
P.C. STA. = 1037+92.22 31.00' RT
P.T. STA. = 39+62.46 32.39 RT'
- EXIST. CURVE C-3**
P.I. STA. = 1034+75.4
 $\Delta = 44^\circ 02' 00''$
D = 0° 30' 00"
R = 11459.2'
T = 4633.6'
L = 8806.7'
E = 901.4'
e = 1.55%
P.C. STA. = 988+41.2
P.T. STA. = 1076+42.9
- PROP. CURVE PROP4-2**
PI STA. = 45+21.11
 $\Delta = 4^\circ 27' 29''$ (RT)
D = 0° 33' 30"
R = 10,263.16'
T = 399.48'
L = 798.55'
E = 7.77'
e = N/C
P.C. STA. = 41+21.63
P.T. STA. = 49+20.18
- SE ATTAINED STA. 985+70.00 TO STA. 989+00.00
SE REMOVED STA. 1025+00.00 TO STA. 1026+75.00**