

BITUMINOUS SURFACE REMOVAL - BUTT JOINT
 STA. 82+36.29 - STA. 82+76.29 102 SQ YD

PROP. CURVE C16
 PI STA. = 83+78.61
 $\Delta = 24^\circ 35' 40''$ (RT)
 $D = 11^\circ 07' 12''$
 $R = 515.26'$
 $T = 112.32'$
 $L = 221.18'$
 $E = 12.10'$
 $e = \text{---}$
 T.R. = ---
 S.E. RUN = ---
 P.C. STA. = 82+66.29
 P.T. STA. = 84+87.47

STA. 954+77.01 (IL RTE 32/33) =
 STA. 85+00.00 (NAZARENE RD)

STA. 955+28.27 (IL RTE 32/33) =
 STA. 84+87.47 (RELOCATED NAZARENE RD)

COMBINATION CONCRETE CURB
 AND GUTTER, TYPE B-6.24 (TYP)
 PR PIPE CULVERT, CLASS A, TYPE 1 18"
 LENGTH = 130'
 USFL = 83' RT, STA. 84+28.33, EL = 603.48
 DSFL = 47' LT, STA. 84+35.34, EL = 603.00
 2 EACH, PRC FLARED END SECTION, 18"

955+58.25
 290.90' RT
 955+77.24
 283.13' RT
 +33.05
 20' AGG FE

POT. STA. 79+50.00
 POT. STA. 80+00.00
 POT. STA. 81+50.00

PR PIPE CULVERT, CLASS A, TYPE 1 18"
 LENGTH = 70'
 USFL = 35' RT, STA. 84+00.00, EL = 603.51
 DSFL = 35' RT, STA. 84+18.36, EL = 603.42
 1 EACH, PRC FLARED END SECTION, 18"
 1 EACH, REINFORCED CONCRETE PIPE TEE, 18"
 PIPE, WITH 18" RISER

CONCRETE MEDIAN,
 TYPE SM-4.24
 ISLAND REMOVAL

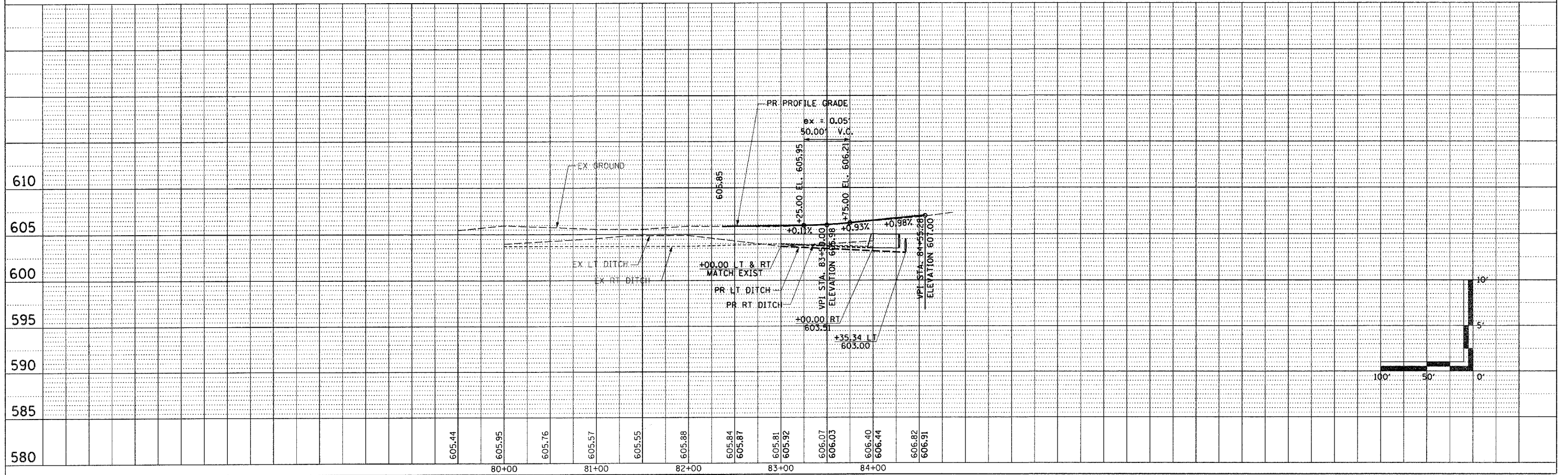
F.A.P. RTE.	SECTION	COUNTY	TOTAL SHEETS	SHEET NO.
774	*	EFFINGHAM	344	86

FED. ROAD DIST. NO. 7 ILLINOIS FED. AID PROJECT
 * 107WRS-1, 107BY, 107BY-1 & 107B-2
CONTRACT NO. 94827



PLAN	SURVEYED	DATE
	PLOTTED	BY
	CHECKED	
	REVISION	
	DATE	
	BY	
	NO.	

PROFILE	SURVEYED	DATE
	PLOTTED	BY
	CHECKED	
	REVISION	
	DATE	
	BY	
	NO.	



FOR INTERSECTION GEOMETRICS
 SEE SHEET 97

