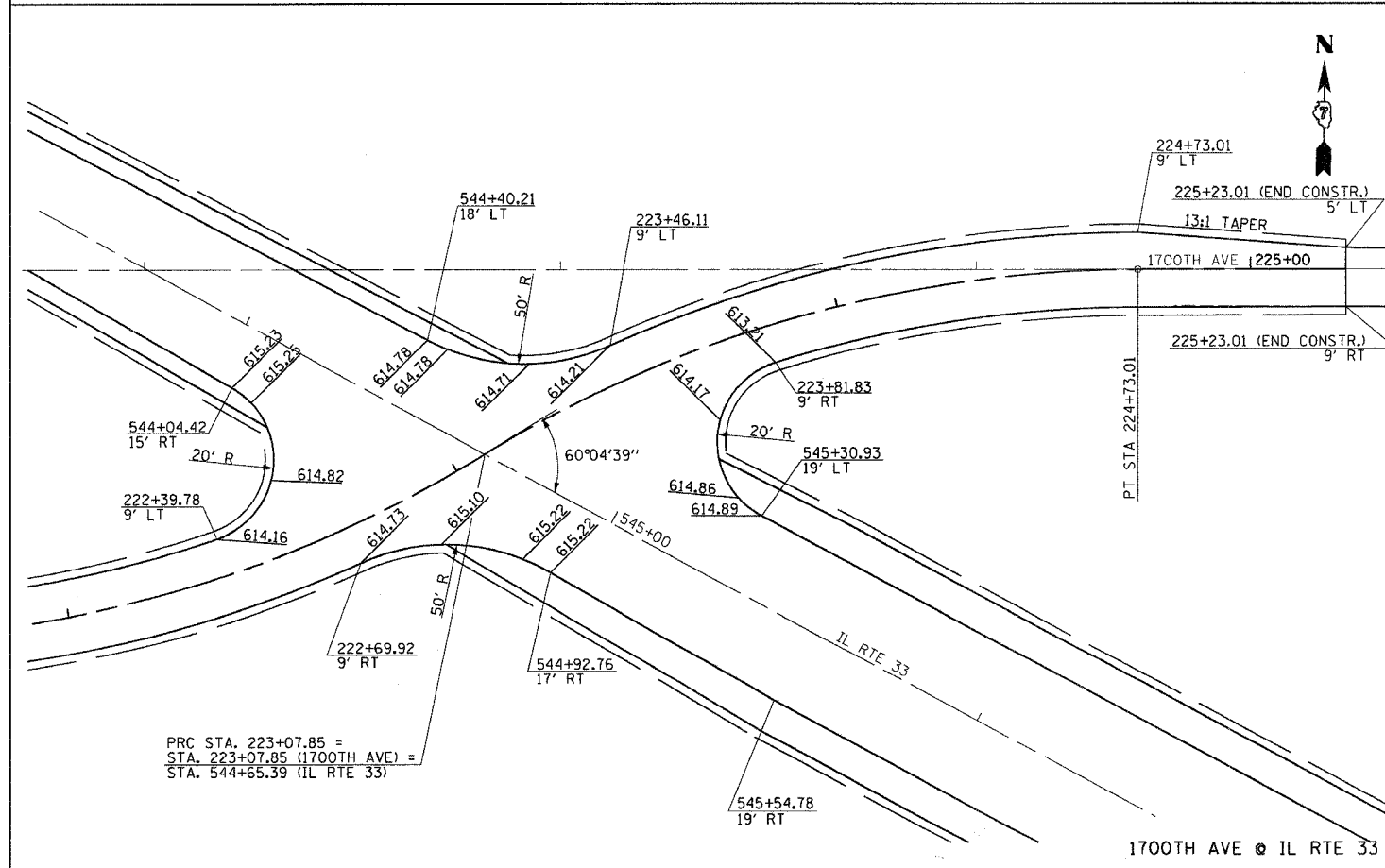


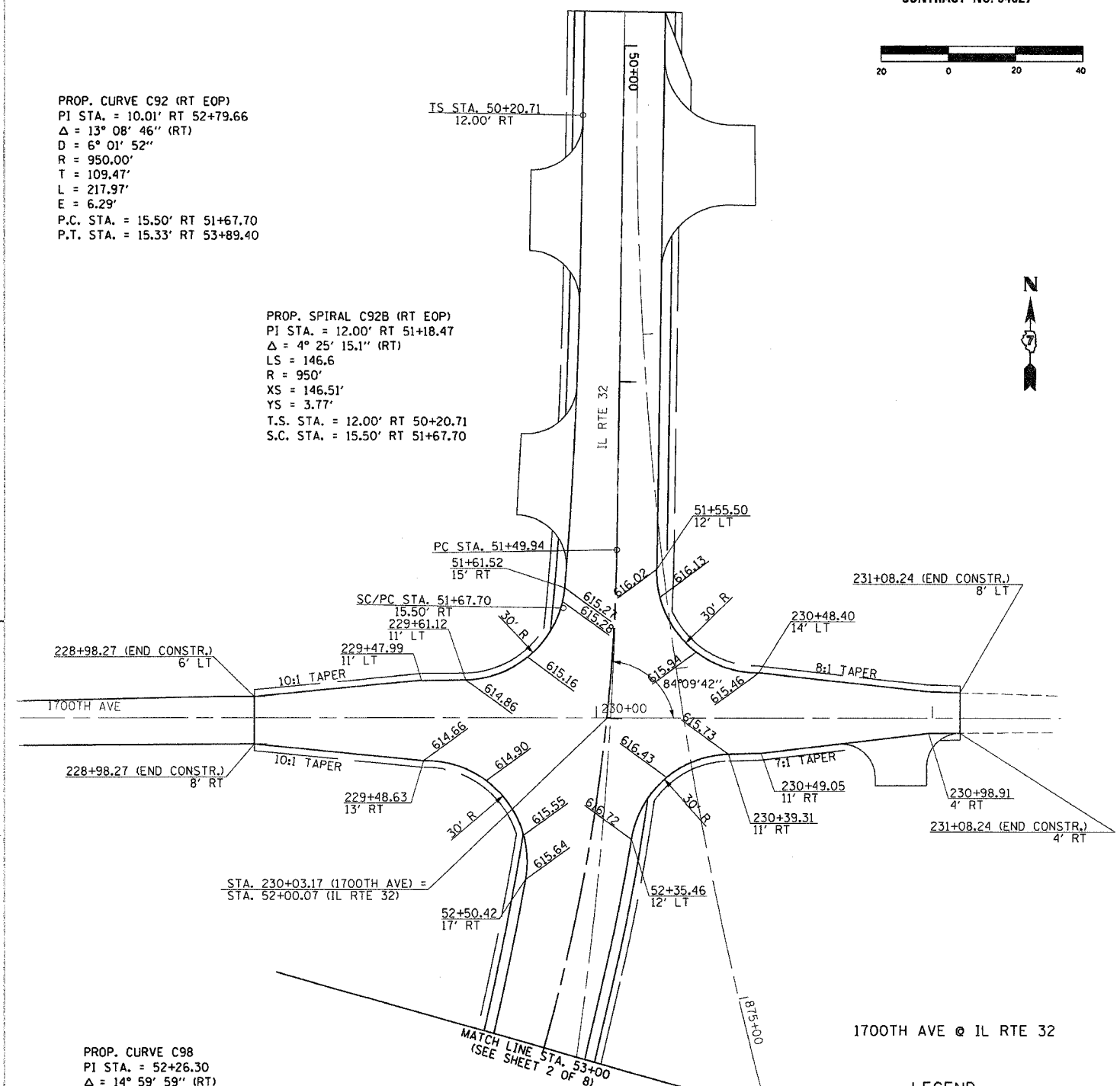
1700TH AVE @ UNNAMED RD



1700TH AVE @ IL RTE 33

PROP. CURVE C92 (RT EOP)
 PI STA. = 10.01' RT 52+79.66
 $\Delta = 13^\circ 08' 46''$ (RT)
 $D = 6^\circ 01' 52''$
 $R = 950.00'$
 $T = 109.47'$
 $L = 217.97'$
 $E = 6.29'$
 P.C. STA. = 15.50' RT 51+67.70
 P.T. STA. = 15.33' RT 53+89.40

PROP. SPIRAL C92B (RT EOP)
 PI STA. = 12.00' RT 51+18.47
 $\Delta = 4^\circ 25' 15.1''$ (RT)
 $LS = 146.6$
 $R = 950'$
 $XS = 146.51'$
 $YS = 3.77'$
 T.S. STA. = 12.00' RT 50+20.71
 S.C. STA. = 15.50' RT 51+67.70



1700TH AVE @ IL RTE 32

PROP. CURVE C98
 PI STA. = 52+26.30
 $\Delta = 14^\circ 59' 59''$ (RT)
 $D = 9^\circ 52' 43''$
 $R = 580.01'$
 $T = 76.36'$
 $L = 151.84'$
 $E = 5.00'$
 $e = 4.00\%$
 P.C. STA. = 51+49.94
 P.T. STA. = 53+01.78
 SE ATTAINED STA. 50+20.00 TO STA. 51+90.00
 SE REMOVED STA. 52+60.00 TO STA. 54+30.00

LEGEND

INDICATES PROPOSED GRADE ELEVATION
 INTERVAL AROUND CURVES IS 20'
 UNLESS NOTED

| REVISIONS | |
|-----------|------|
| NAME | DATE |
| | |
| | |
| | |
| | |
| | |
| | |
| | |
| | |
| | |
| | |

ILLINOIS DEPARTMENT OF TRANSPORTATION

INTERSECTION GEOMETRICS
 SHEET 1 OF 8

DATE 8/02
 DRAWN BY MLO
 CHECKED BY SJK