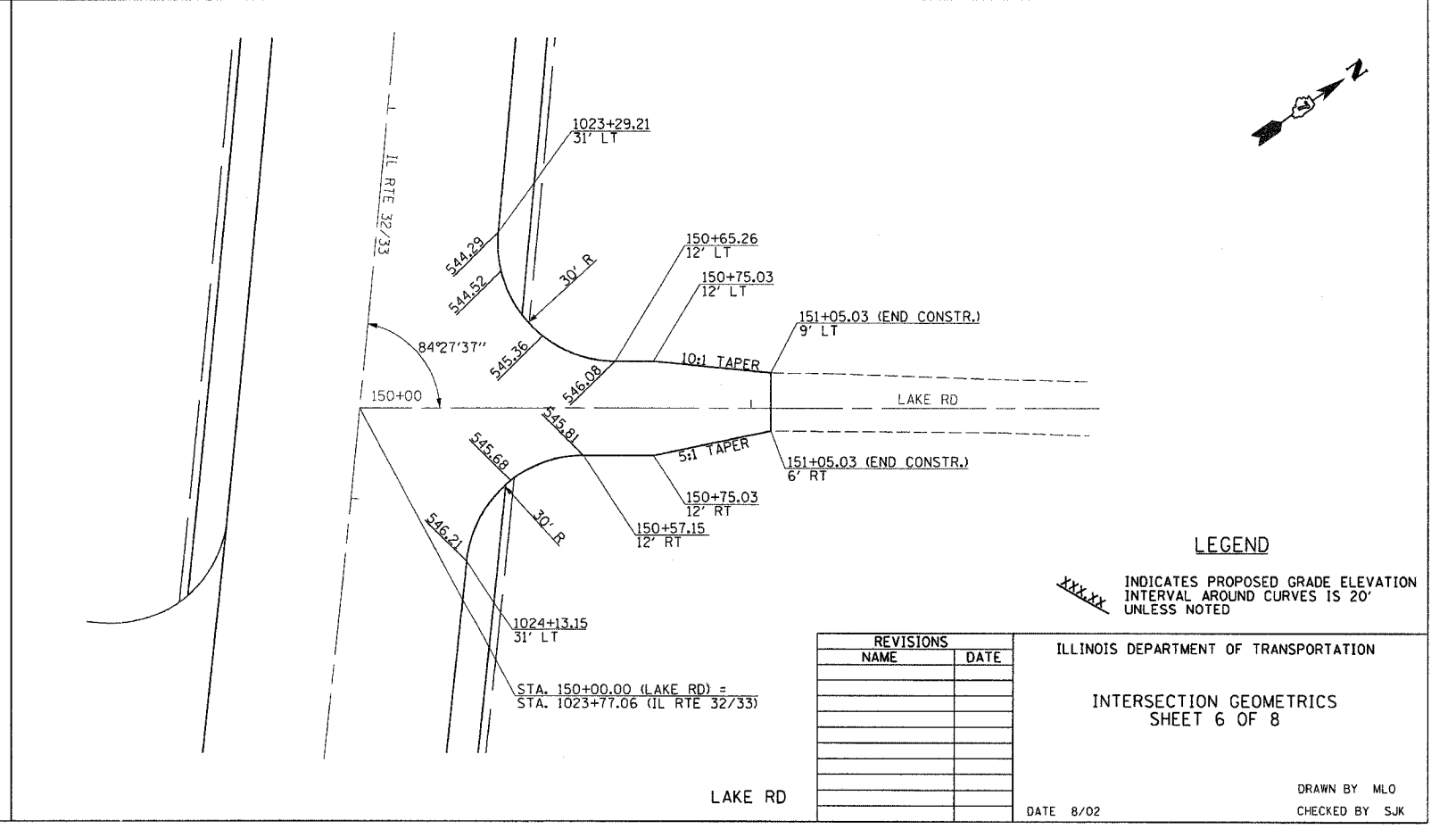
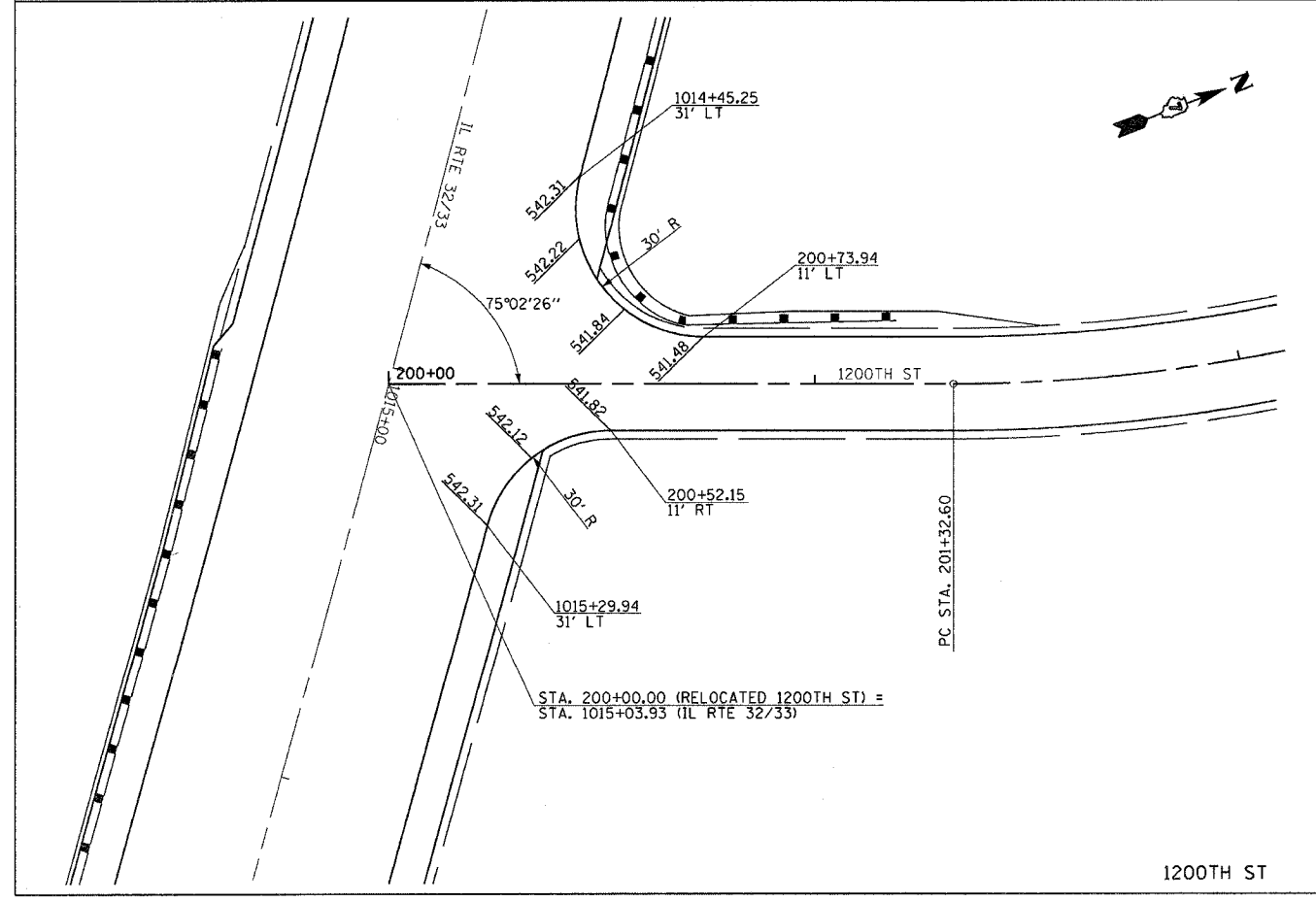
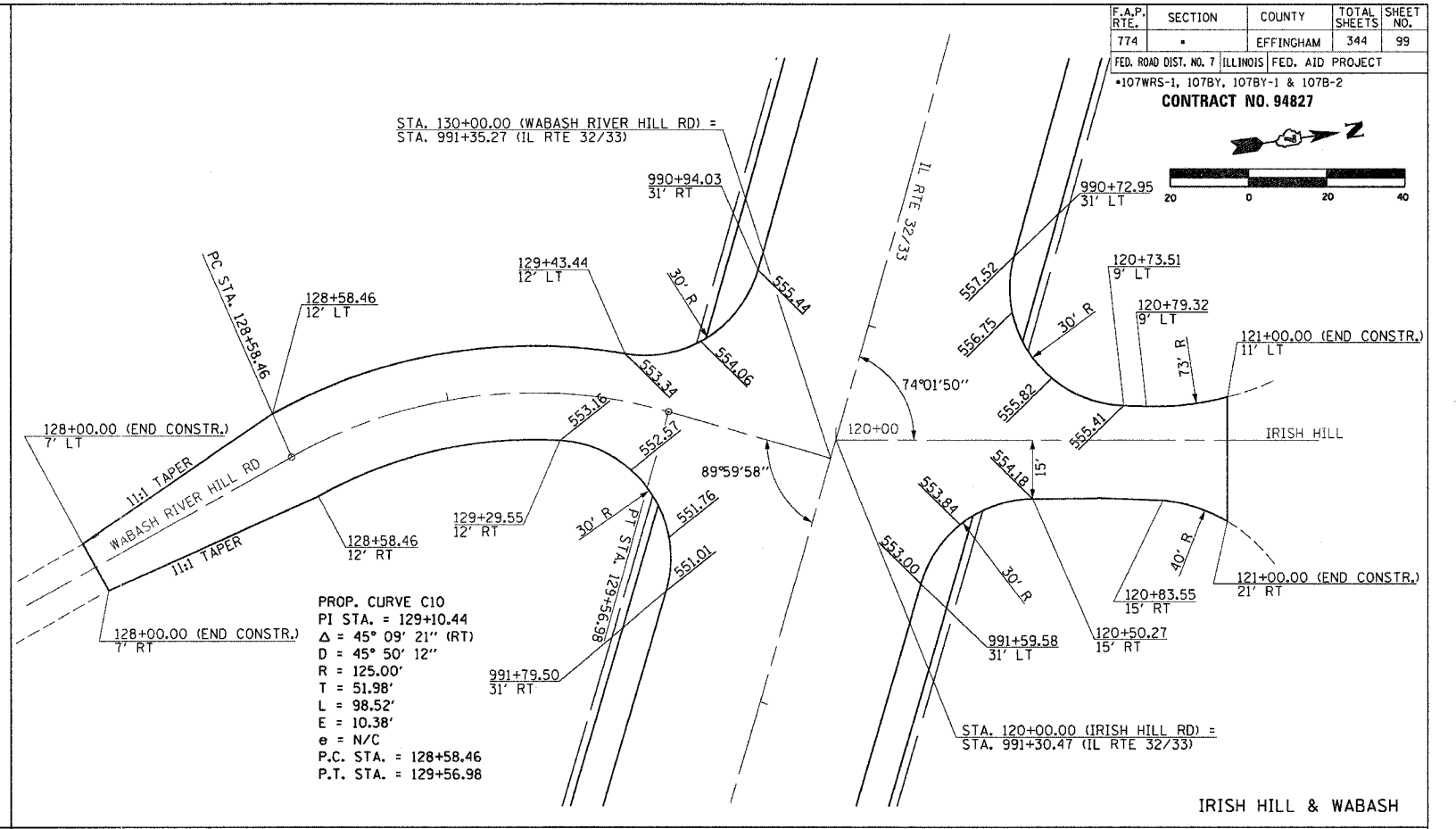
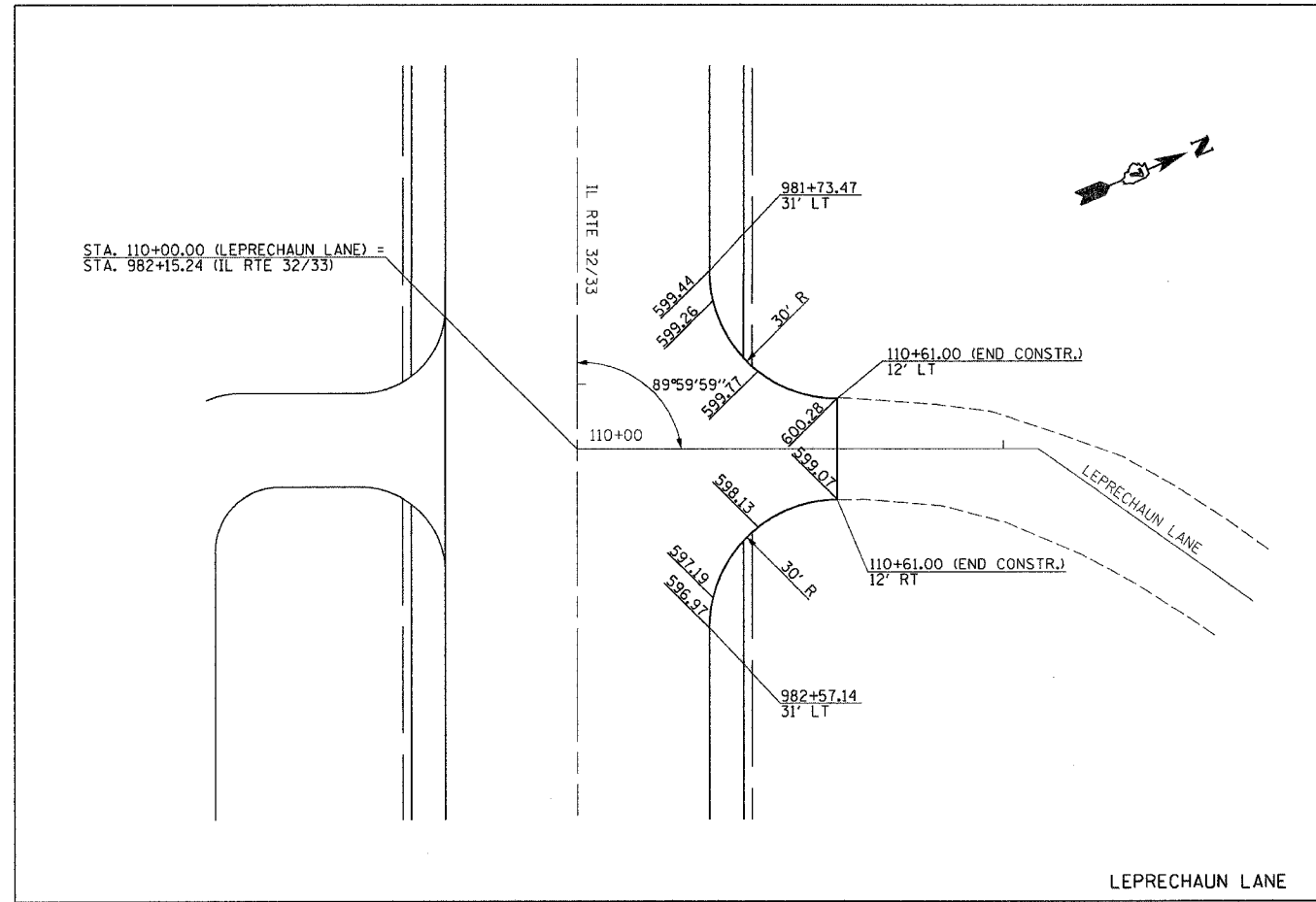
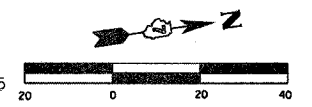


F.A.P. RTE.	SECTION	COUNTY	TOTAL SHEETS	SHEET NO.
774		EFFINGHAM	344	99

FED. ROAD DIST. NO. 7 ILLINOIS FED. AID PROJECT
 107WRS-1, 107BY, 107BY-1 & 107B-2
CONTRACT NO. 94827



LEGEND
 XXX.XX INDICATES PROPOSED GRADE ELEVATION INTERVAL AROUND CURVES 15' 20' UNLESS NOTED

REVISIONS	
NAME	DATE

ILLINOIS DEPARTMENT OF TRANSPORTATION
 INTERSECTION GEOMETRICS
 SHEET 6 OF 8
 DATE 8/02
 DRAWN BY MLO
 CHECKED BY SJK