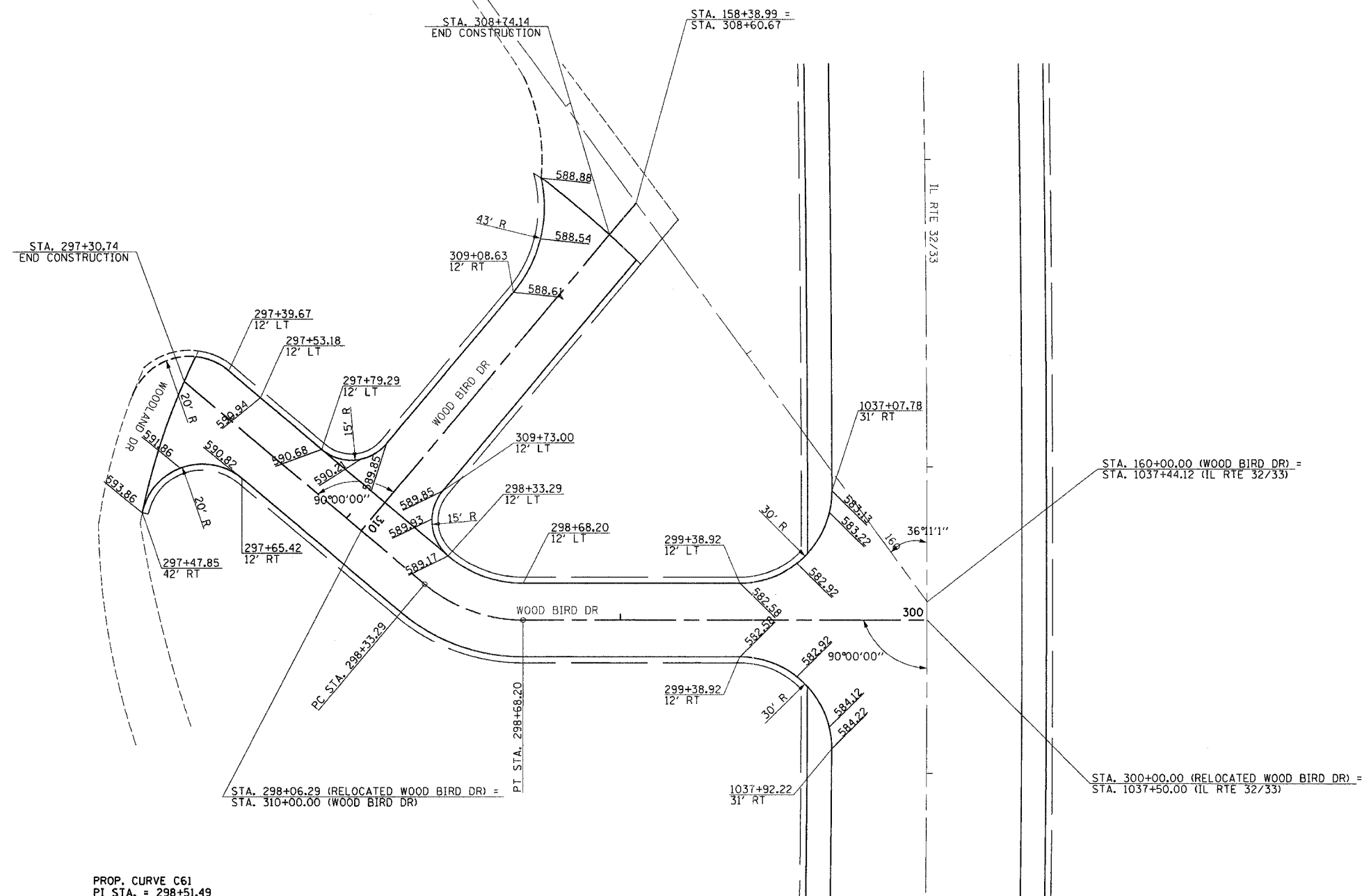
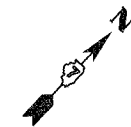


F.A.P. RTE.	SECTION	COUNTY	TOTAL SHEETS	SHEET NO.
774	.	EFFINGHAM	344	100
FED. ROAD DIST. NO. 7 ILLINOIS FED. AID PROJECT				
*107WRS-1, 107BY, 107BY-1 & 107B-2				
CONTRACT NO. 94827				



PROP. CURVE C61
 PI STA. = 298+51.49
 $\Delta = 40^{\circ} 00' 00''$ (LT)
 $D = 114^{\circ} 35' 30''$
 $R = 50.00'$
 $T = 18.20'$
 $L = 34.91'$
 $E = 3.21'$
 $\theta = N/C$
 P.C. STA. = 298+33.29
 P.T. STA. = 298+68.20

LEGEND

XXXX INDICATES PROPOSED GRADE ELEVATION INTERVAL AROUND CURVES IS 20' UNLESS NOTED

REVISIONS	
NAME	DATE

ILLINOIS DEPARTMENT OF TRANSPORTATION

INTERSECTION GEOMETRICS
 SHEET 7 OF 8

WOOD BIRD DR

DATE 8/02
 DRAWN BY MLO
 CHECKED BY SJK