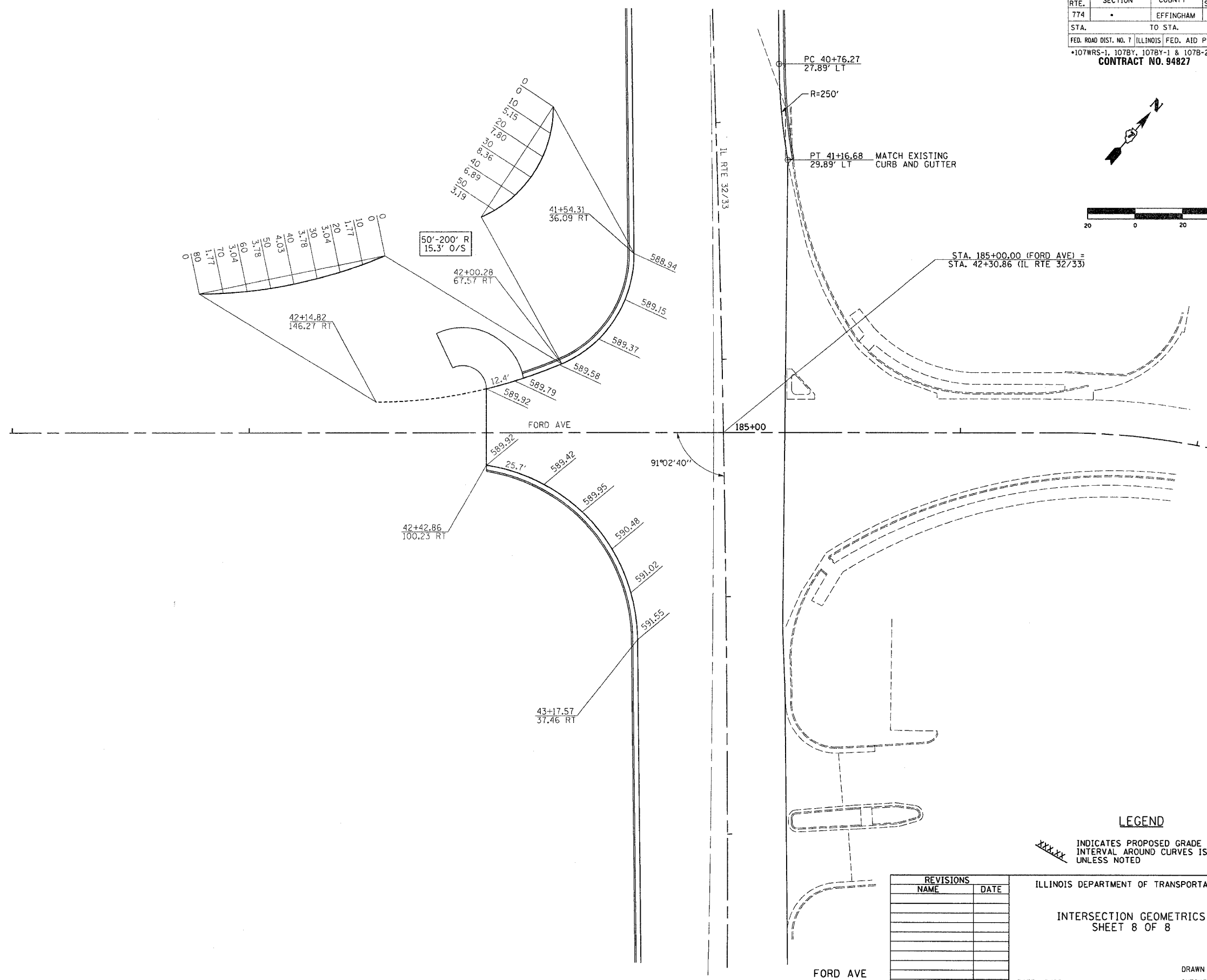
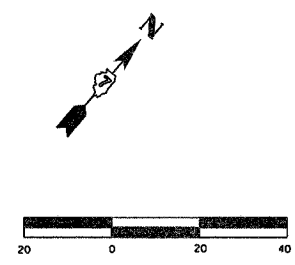


F.A.P. RTE.	SECTION	COUNTY	TOTAL SHEETS	SHEET NO.
774	.	EFFINGHAM	344	101
STA.		TO STA.		
FED. ROAD DIST. NO. 7		ILLINOIS FED. AID PROJECT		
*107WRS-1, 107BY, 107BY-1 & 107B-2				
CONTRACT NO. 94827				



LEGEND
 xxx.xx INDICATES PROPOSED GRADE ELEVATION
 INTERVAL AROUND CURVES IS 20'
 UNLESS NOTED

REVISIONS	
NAME	DATE

ILLINOIS DEPARTMENT OF TRANSPORTATION
 INTERSECTION GEOMETRICS
 SHEET 8 OF 8

DATE 8/02
 DRAWN BY MLO
 CHECKED BY SJK