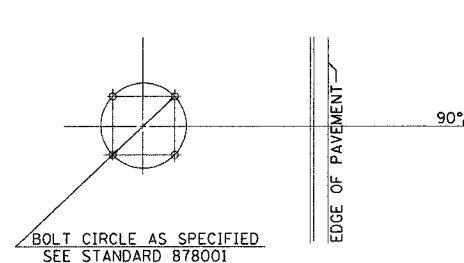
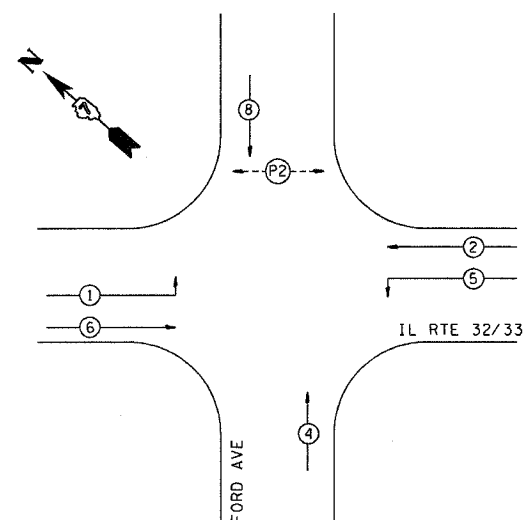


BILL OF MATERIALS

ITEM	UNIT	QUANTITY
SIGN PANEL - TYPE 1	SO FT	9
SIGN PANEL - TYPE 2	SO FT	62
WOOD SIGN SUPPORT	FEET	18
SERVICE INSTALLATION, TYPE B	EACH	1
WOOD POLE, 35 FOOT, CLASS 4	EACH	1
CONDUIT IN TRENCH, 2" DIA., PVC	FEET	75
CONDUIT IN TRENCH, 2 1/2" DIA., PVC	FEET	775
CONDUIT IN TRENCH, 4" DIA., PVC	FEET	123
CONDUIT IN TRENCH, 6" DIA., PVC	FEET	8
CONDUIT, PUSHED, 2 1/2" DIA., PVC	FEET	435
CONDUIT, PUSHED, 4" DIA., PVC	FEET	145
CONDUIT, PUSHED, 6" DIA., PVC	FEET	98
HANDHOLE	EACH	7
DOUBLE HANDHOLE	EACH	1
TRENCH AND BACKFILL FOR ELECTRICAL WORK	FEET	981
FULL-ACTUATED CONTROLLER AND TYPE IV CABINET	EACH	1
TRANSCEIVER - FIBER OPTIC	EACH	2
FIBER OPTIC CABLE IN CONDUIT, NO. 62.5/125, 6F	FEET	1366
ELECTRICAL CABLE IN CONDUIT, SIGNAL, NO. 14 3/C	FEET	244
ELECTRICAL CABLE IN CONDUIT, SIGNAL, NO. 14 4/C	FEET	270
ELECTRICAL CABLE IN CONDUIT, SIGNAL, NO. 14 5/C	FEET	2125
ELECTRICAL CABLE IN CONDUIT, SIGNAL, NO. 14 7/C	FEET	801
ELECTRICAL CABLE IN CONDUIT, SERVICE, NO. 6 2/C	FEET	54
TRAFFIC SIGNAL POST, PAINTED STEEL 16 FT.	EACH	1
TRAFFIC SIGNAL POST, PAINTED STEEL 18 FT.	EACH	2
STEEL COMBINATION MAST ARM ASSEMBLY AND POLE 36 FT.	EACH	1
STEEL COMBINATION MAST ARM ASSEMBLY AND POLE 42 FT.	EACH	1
STEEL COMBINATION MAST ARM ASSEMBLY AND POLE 48 FT.	EACH	1
STEEL COMBINATION MAST ARM ASSEMBLY AND POLE 50 FT.	EACH	1
CONCRETE FOUNDATION, TYPE A	FEET	18
CONCRETE FOUNDATION, TYPE D (SPECIAL)	FEET	6
CONCRETE FOUNDATION, TYPE E 36 INCH DIAMETER	FEET	52
DRILL EXISTING FOUNDATION	EACH	1
TRAFFIC SIGNAL BACKPLATE, FORMED PLASTIC	EACH	18
LIGHT DETECTOR	EACH	2
LIGHT DETECTOR AMPLIFIER	EACH	1
ELECTRICAL CABLE IN CONDUIT NO. 20 3/C	FEET	706
VIDEO VEHICLE DETECTION SYSTEM	L SUM	1
TRAFFIC SIGNAL BATTERY BACKUP SYSTEM	EACH	1
ADA PEDESTRIAN PUSH-BUTTON	EACH	2
PEDESTRIAN SIGNAL HEAD, POLYCARBONATE, LED, 1-FACE, BRACKET MOUNTED	EACH	2
SIGNAL HEAD, POLYCARBONATE, LED, 1-FACE, 3-SECTION, BRACKET MOUNTED	EACH	1
SIGNAL HEAD, POLYCARBONATE, LED, 1-FACE, 3-SECTION, MAST ARM MOUNTED	EACH	6
SIGNAL HEAD, POLYCARBONATE, LED, 1-FACE, 5-SECTION, MAST ARM MOUNTED	EACH	2
SIGNAL HEAD, POLYCARBONATE, LED, 2-FACE, 3-SECTION, BRACKET MOUNTED	EACH	2
SIGNAL HEAD, POLYCARBONATE, LED, 2-FACE, 1-3-SECTION, 1-5-SECTION BRACKET MOUNTED	EACH	1
SIGNAL HEAD, POLYCARBONATE, LED, 3-FACE, 2-3-SECTION, 1-5-SECTION, BRACKET MOUNTED	EACH	1



**DETAIL OF MAST ARM FOUNDATION
BOLT PATTERN**



PHASE DESIGNATION DIAGRAM

LEGEND

- ② - VEHICULAR PHASE NO. X
- Ⓟ - PEDESTRIAN PHASE NO. X

GENERAL NOTES

- THE FOLLOWING SIGNAL HEADS SHALL BE WIRED IN PARALLEL AT THE MAST POLE HANDHOLE: (A1, A2), (B1, B2), (C1, C2), (D1, D2) - EACH MAST ARM MOUNTED SIGNAL HEAD SHALL HAVE ITS OWN INDIVIDUAL CABLE FROM THE MAST POLE HANDHOLE TO THE SIGNAL HEAD.
- THE ACTUAL LOCATION OF ALL SIGNAL FOUNDATIONS, HANDHOLES, AND TRAFFIC CONTROLLER WILL BE DETERMINED IN THE FIELD BY THE ENGINEER.
- POST MOUNTED SIGNALS SHALL BE INSTALLED SO THAT NO PART OF THE SIGNAL HEAD IS WITHIN 2 FT OF THE FACE OF CURB.
- ALL MAST ARM POLES SHALL BE A MINIMUM OF 6 FT FROM THE CENTER OF THE POLE TO THE FACE OF CURB (ON THE MAST ARM SIDE) OR AS SHOWN ON THE PLANS.
- ALIGN ADJACENT RED INDICATIONS TO SAME HEIGHT ABOVE PAVEMENT.
- THE BASE FOR A TRAFFIC SIGNAL POST SHALL BE SITUATED SUCH THAT THE HANDHOLE IS LOCATED ON A SIDE AWAY FROM A TRAVELED LANE.

REVISIONS	
NAME	DATE

ILLINOIS DEPARTMENT OF TRANSPORTATION

FORD AVENUE
TRAFFIC SIGNAL PLANS
SHEET 4 OF 4

DATE 8/02
DRAWN BY MLO
CHECKED BY BWD