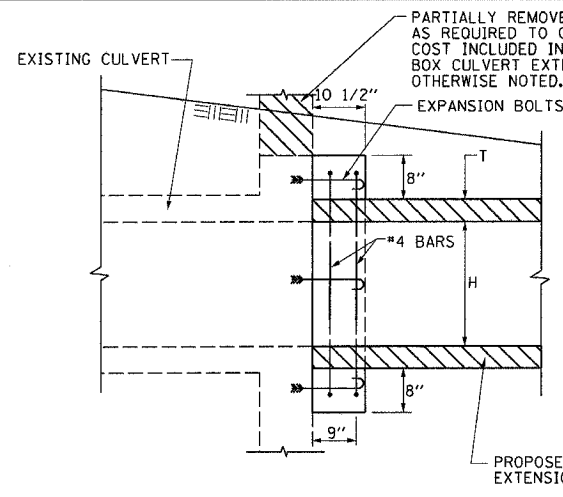
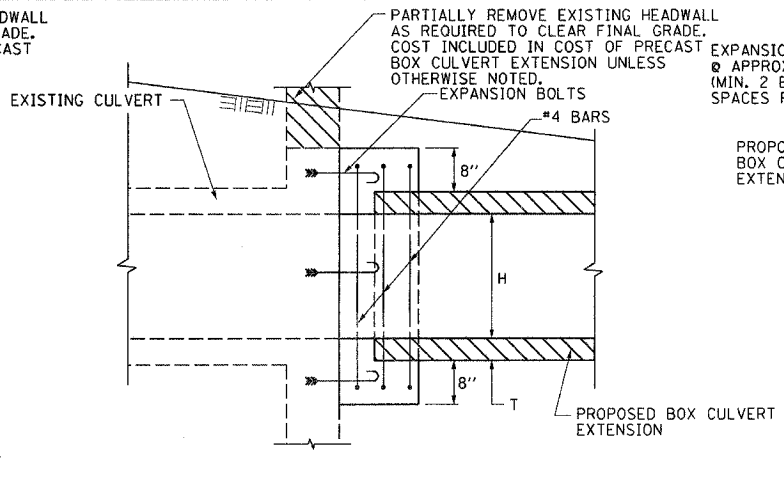


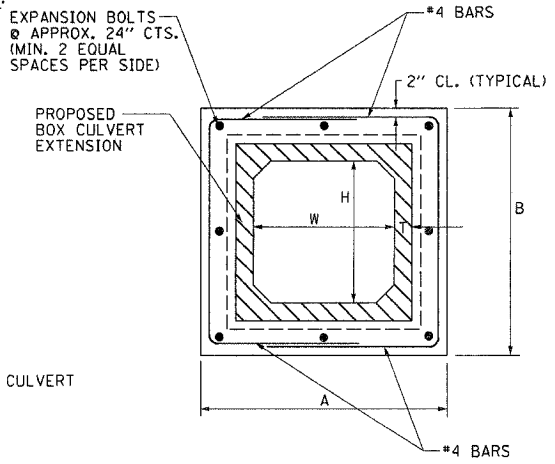
F.A.P. RTE.	SECTION	COUNTY	TOTAL SHEETS	SHEET NO.
774	*	EFFINGHAM	344	139
FED. ROAD DIST. NO. 7 ILLINOIS FED. AID PROJECT				
* 107WRS-1, 107BY, 107BY-1 & 107B-2				
CONTRACT NO. 94827				



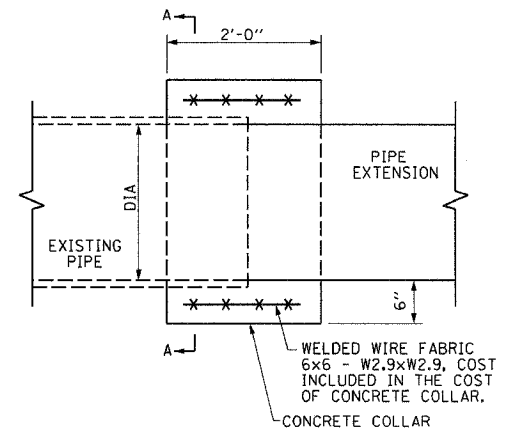
SECTION A-A



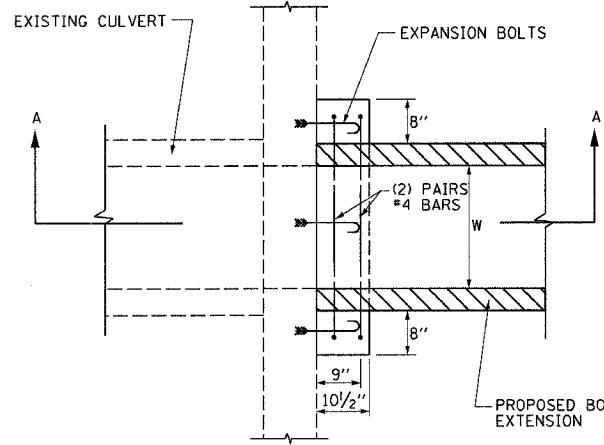
SECTION B-B



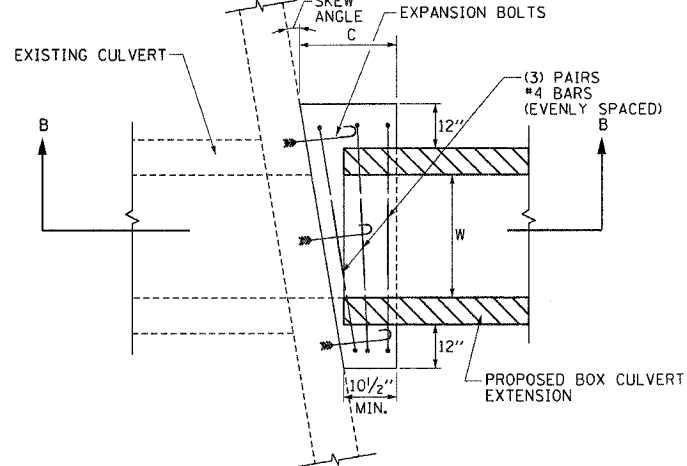
END VIEW



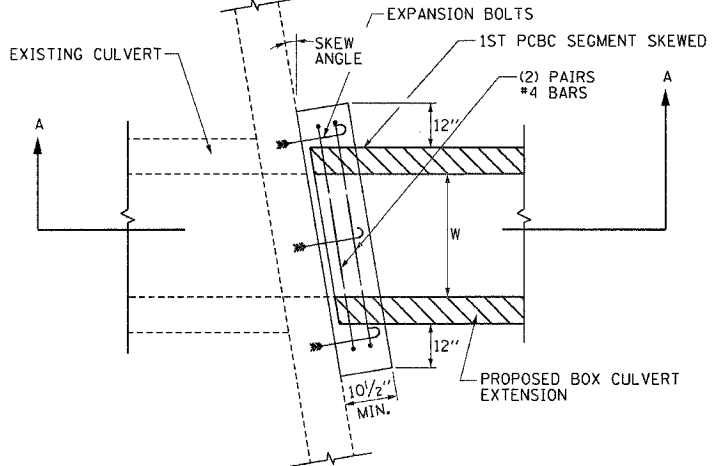
PLAN



PLAN VIEW (RIGHT ANGLE CULVERT)



PLAN VIEW



PLAN VIEW

NOTE: EXPANSION BOLTS SHALL CONSIST OF SELF-DRILLING EXPANSION SHIELDS AND HOOKED BOLTS. HOOKED BOLTS SHALL EXTEND A MINIMUM OF 9" INTO THE NEW CONCRETE.

PCBC WITH SQUARE END FOR:  
W=3' (ANY SKEW ANGLE)  
W=4' WITH SKEW ANGLE <30°  
W=6' WITH SKEW ANGLE <20°  
W=8' WITH SKEW ANGLE <15°

PCBC WITH FIRST SEGMENT SKEWED FOR:  
W=4' WITH SKEW ANGLE >30°  
W=6' WITH SKEW ANGLE >20°  
W=8' WITH SKEW ANGLE >15°

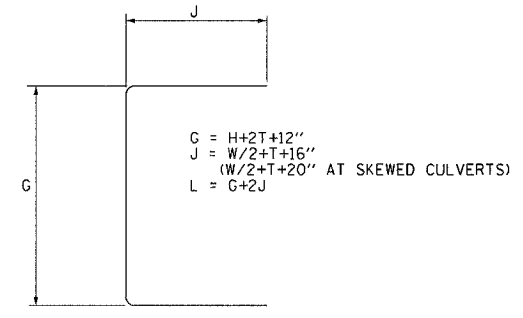
STATION	DIA (INCHES)	EXTENS LENGTH (FEET)	PRC FLARED END SECTION (EACH)	CONCRETE COLLAR * (CU YD)
RT/54+48.13	24	18	1	0.3
TOTAL				0.3

\* THE COST OF CONCRETE COLLAR FOR PIPE CULVERT EXTENSION IS TO BE INCLUDED IN THE COST OF CONCRETE PIPE EXTENSION.

SIDE	STATION	CULVERT SIZE	EXTENSION LENGTH (FEET)	CULVERT NO.	DESIGN FILL HEIGHT (FEET)	BOX CULVERT END SECTION (EACH)	SKEW ANGLE (DEGREE)	DIMENSIONS (INCHES)						REINFORCEMENT BARS				EXPANSION BOLTS #4 (EACH)	CONCRETE COLLAR * (CU YD)	
								A	B	C	W	H	T	G	J	L	NUMBER BARS			LB
LT	936+34.32	PCBC 3'x2'	26	1	<2'	1	-	60	48	-	36	24	4	44	38	120	4	27	8	0.3
RT	936+34.32	PCBC 3'x2'	26	1	<2'	1	-	60	48	-	36	24	4	44	38	120	4	27	8	0.3
LT	951+33.21	PCBC 4'x3'	23	2	2'	1	-	74	62	-	48	36	5	58	45	148	4	33	10	0.4
RT	951+33.21	PCBC 4'x3'	25	2	2'	1	-	74	62	-	48	36	5	58	45	148	4	33	10	0.4
RT	1034+79.00	PCBC 4'x3'	85	3	20'	1	39°	106	62	-	48	36	5	58	61	180	4	40	12	0.7
LT	1034+78.00	PCBC 2'x2'	45	4	15'	1	5°	56	48	16	24	24	4	44	36	116	6	40	8	0.5
LT	1036+00.00	PCBC 3'x3'	30	5	18'	-	8°	68	60	20	36	36	4	56	42	140	6	50	10	0.9
TOTALS:																250	66	3.5		

\*SKEWED CULVERT

CONCRETE BOX CULVERT EXTENSIONS



\* THE COST OF CONCRETE COLLAR FOR PRECAST BOX CULVERT EXTENSION IS TO BE INCLUDED IN THE COST OF BOX CULVERT EXTENSION.

REVISIONS NAME	DATE

ILLINOIS DEPARTMENT OF TRANSPORTATION

CULVERT EXTENSION COLLAR DETAILS

DATE 8/02

DRAWN BY ASB  
CHECKED BY SJK