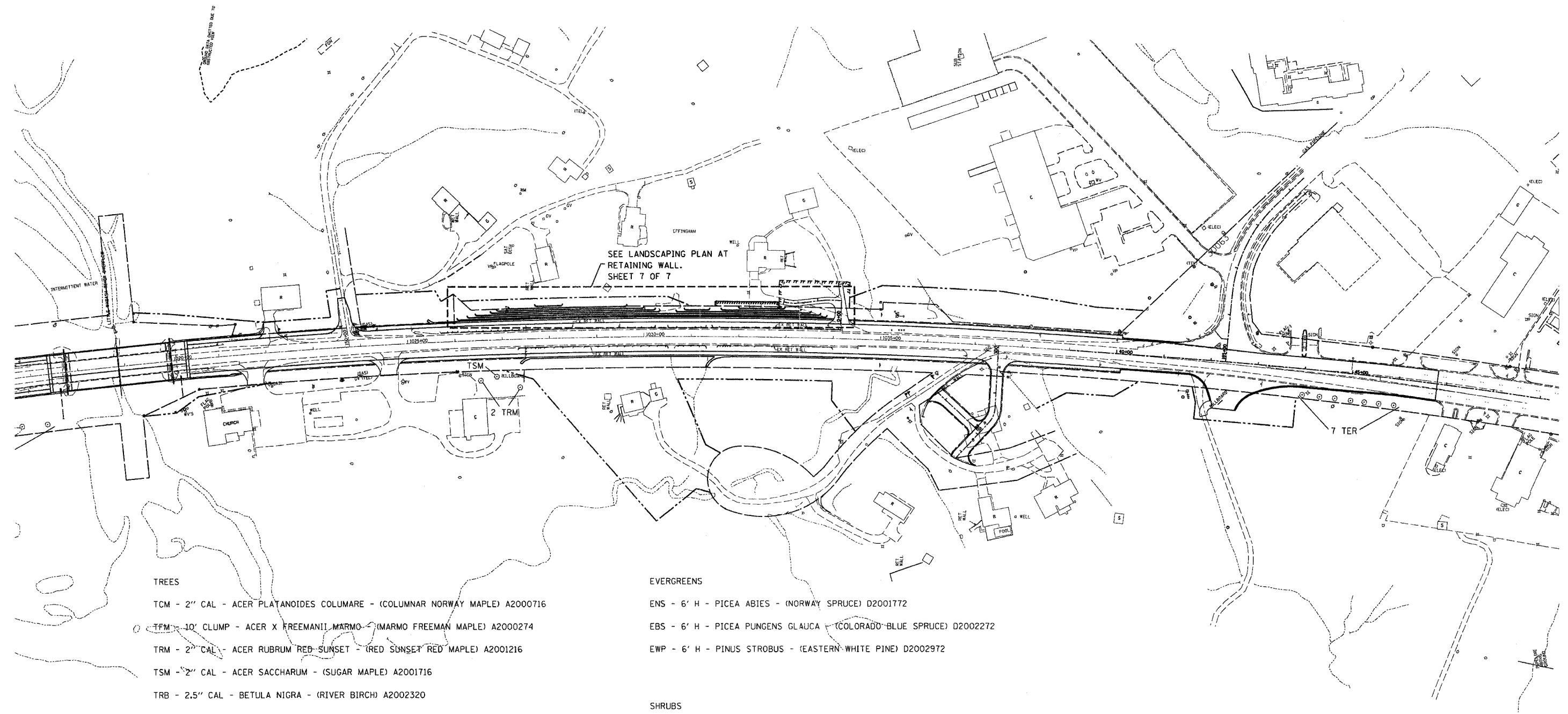


FAP RTE.	SECTION	COUNTY	TOTAL SHEETS	SHEET NO.
774	*	EFFINGHAM	344	146F
FED. ROAD DIST. NO. 1	ILLINOIS	FED. AID PROJECT NO.		

CONTRACT NO. 94827
 * 107WRS-1, 104BY, 107BY-1, 107B-2

\$USERS\$
 \$DATE\$
 DGN-SPEC



- TREES**
- TCM - 2" CAL - ACER PLATANOIDES COLUMARE - (COLUMNAR NORWAY MAPLE) A2000716
 - TFM - 10' CLUMP - ACER X FREEMANII MARMO - (MARMO FREEMAN MAPLE) A2000274
 - TRM - 2" CAL - ACER RUBRUM RED SUNSET - (RED SUNSET RED MAPLE) A2001216
 - TSM - 2" CAL - ACER SACCHARUM - (SUGAR MAPLE) A2001716
 - TRB - 2.5" CAL - BETULA NIGRA - (RIVER BIRCH) A2002320
 - TNC - 2" CAL - CATALPA SPECIOSA - (NORTHERN CATALPA) A2002816
 - TSB - 5' CLUMP - AMELANCHIER LAEVIS - (ALLEGHENY SERVICEBERRY) B2000964
 - TER - 2" CAL - CERCIC CANADENSIS - (EASTERN REDBUD) B2001116
 - TBC - 2" CAL - TAXODIUM DISTICHUM - (COMMON BALD CYPRESS) A2007616

- EVERGREENS**
- ENS - 6' H - PICEA ABIES - (NORWAY SPRUCE) D2001772
 - EBS - 6' H - PICEA PUNGENS GLAUCA - (COLORADO BLUE SPRUCE) D2002272
 - EWP - 6' H - PINUS STROBUS - (EASTERN WHITE PINE) D2002972

- SHRUBS**
- SRD - 3' H - CORNUS SERICEA - (REDSIER DOGWOOD) C2C01636
 - SNF - 3' H - FORSYTHIA NORTHERN SUN - (NORTHERN SUN BORDERFORSYTHIA) C2C03036
 - SAV - 2.5' H - VIBERNUM DENTATUM MORTON - (NORTHERN BURGUNDY ARROWWOOD VIBERNUM) C2C11830
 - SPJ - 3' W - JUNIPERUS CHINENSIS PFITZER ANA COMPACT - (COMPACT PFITZER JUNIPER) D2000536

REVISIONS	
NAME	DATE

ILLINOIS DEPARTMENT OF TRANSPORTATION

LANDSCAPING PLAN
 SHEET 6 OF 7

SCALE: VERT.
 HORIZ.
 DATE

DRAWN BY DIST 7
 CHECKED BY DIST 7