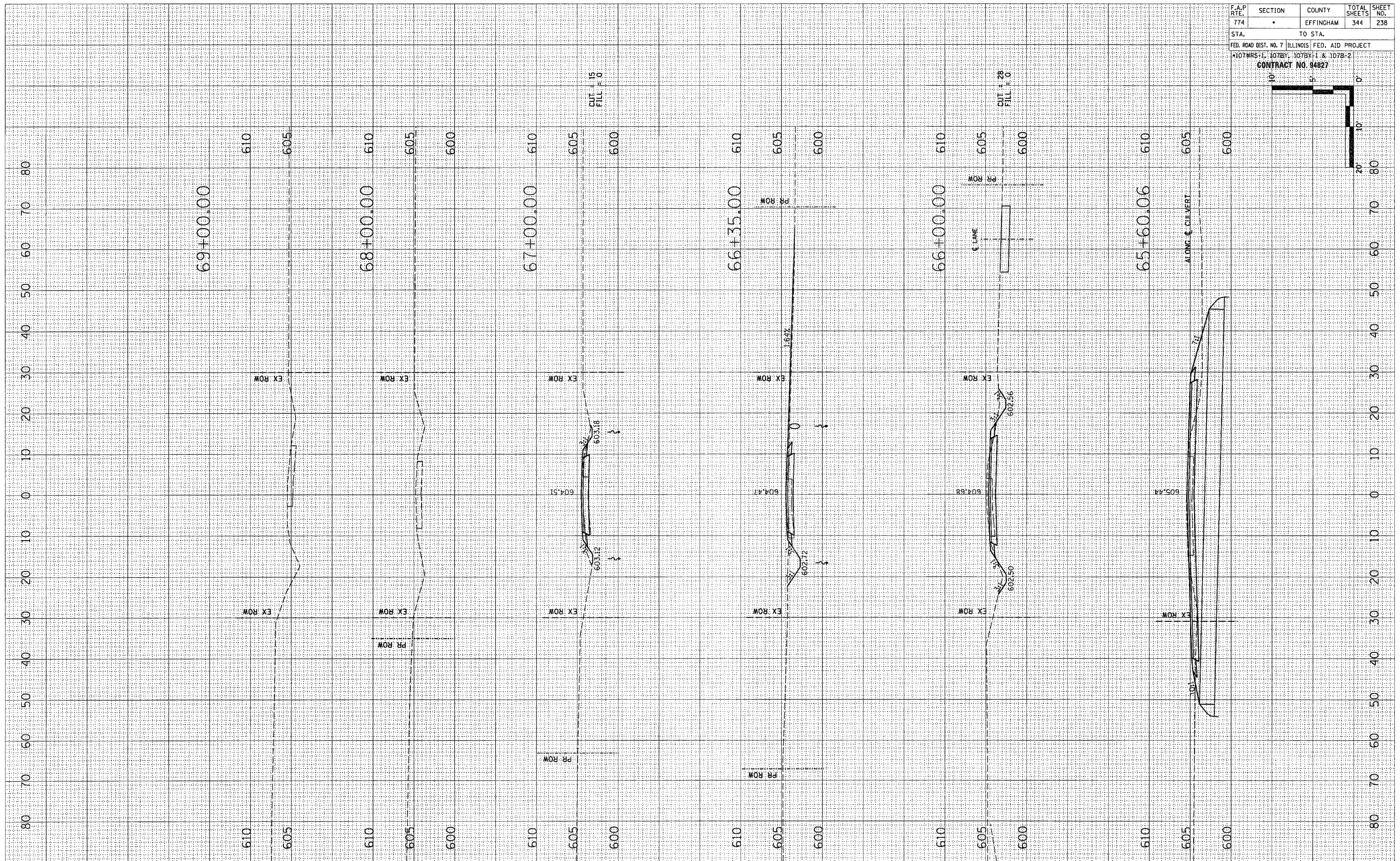
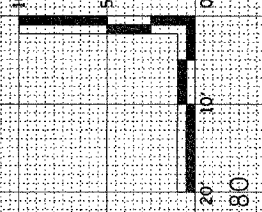


FINAL SURVEY	SUBMITTED	DATE
NOTE BOOK	PLOTTED	BY
NO.	TEMPLATE	
	AREAS CHECKED	

ORIGINAL SURVEY	SUBMITTED	DATE
NOTE BOOK	PLOTTED	BY
NO.	TEMPLATE	
	AREAS CHECKED	

F.A.P. RTE. 774	SECTION	COUNTY EFFINGHAM	TOTAL SHEETS 344	SHEET NO. 238
STA. TO STA.		FED. ROAD DIST. NO. 7 ILLINOIS FED. AID PROJECT		
		CONTRACT NO. 94827		



1000TH STREET