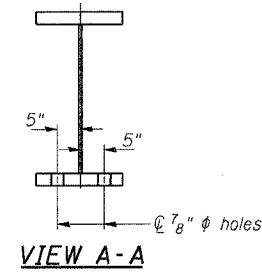
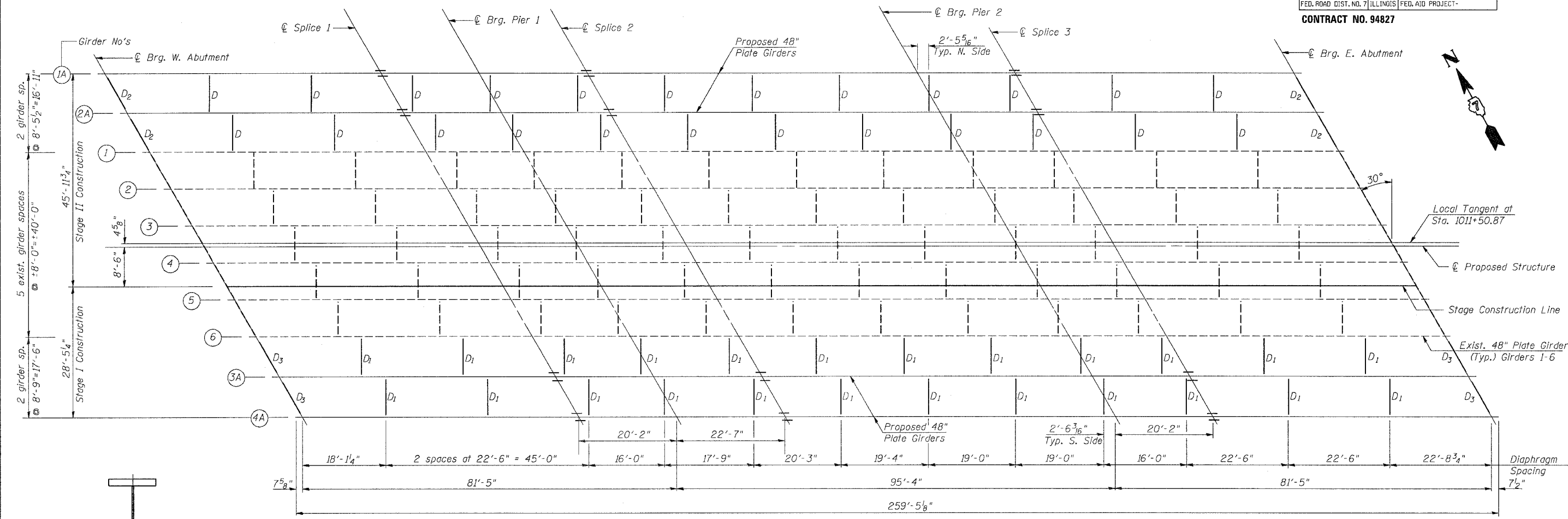


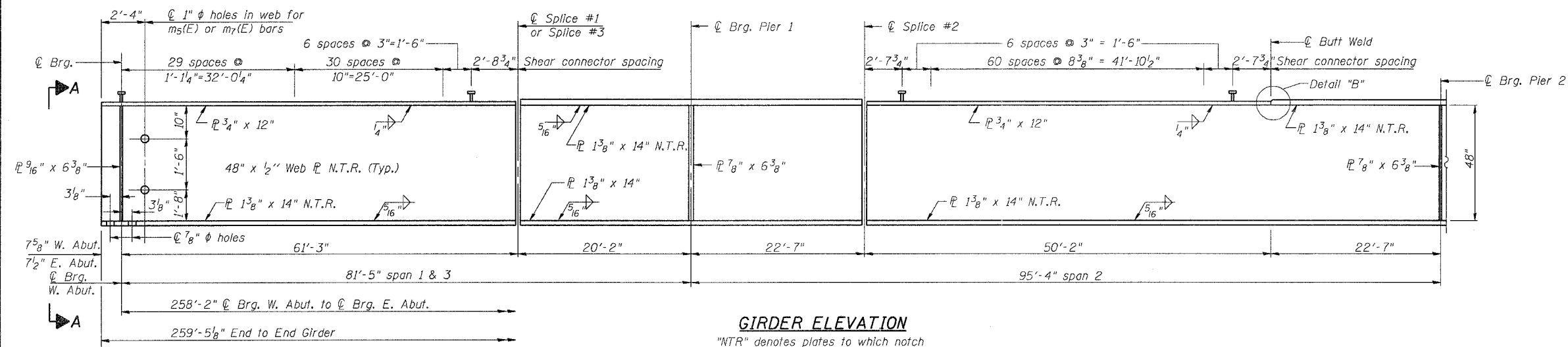
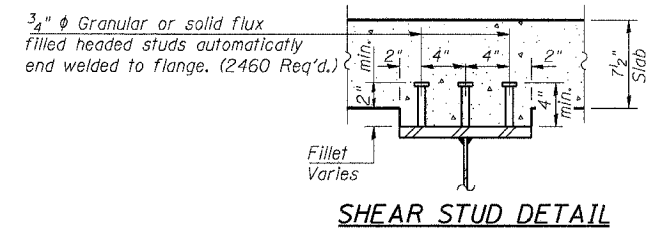
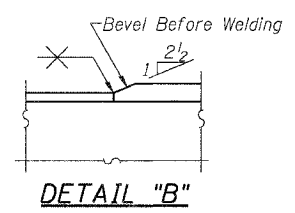
ROUTE NO.	SECTION	COUNTY	TOTAL SHEETS	SHEET NO.	SHEET NO. 12 29 SHEETS
F.A.P. RTE. 774	107BY	EFFINGHAM	344	304	
FED. ROAD DIST. NO. 7 ILLINOIS FED. AID PROJECT-					

CONTRACT NO. 94827



FRAMING PLAN

The existing steel diaphragms at the abutments shall be cleaned and left in place.
Cost of cleaning is included with Concrete Superstructure.



GIRDER ELEVATION

"NTR" denotes plates to which notch toughness requirements are applicable.

SHEET TITLE		STRUCTURAL STEEL	
PROJECT	IL RTE. 32/33 OVER LITTLE WABASH RIVER	PROJECT NO.	02017
	F.A.P. RTE. 774 SECTION 107BY	SCALE	
	EFFINGHAM COUNTY	DATE	
	STATION 1011+50.17	DRAWN BY	TFG
	STRUCTURE NO. 025-0078	CHECKED BY	GJIB/MCB
COOMBE-BLOXDORF P.C.		DRAWING NO.	12
Engineers / Land Surveyors			
Springfield, Illinois			
Design Firm License No. 184-002703			
			OF 29 SHTS

SPEC. #1/FILE/REVISED

11/21/04 10:50:12 AM