

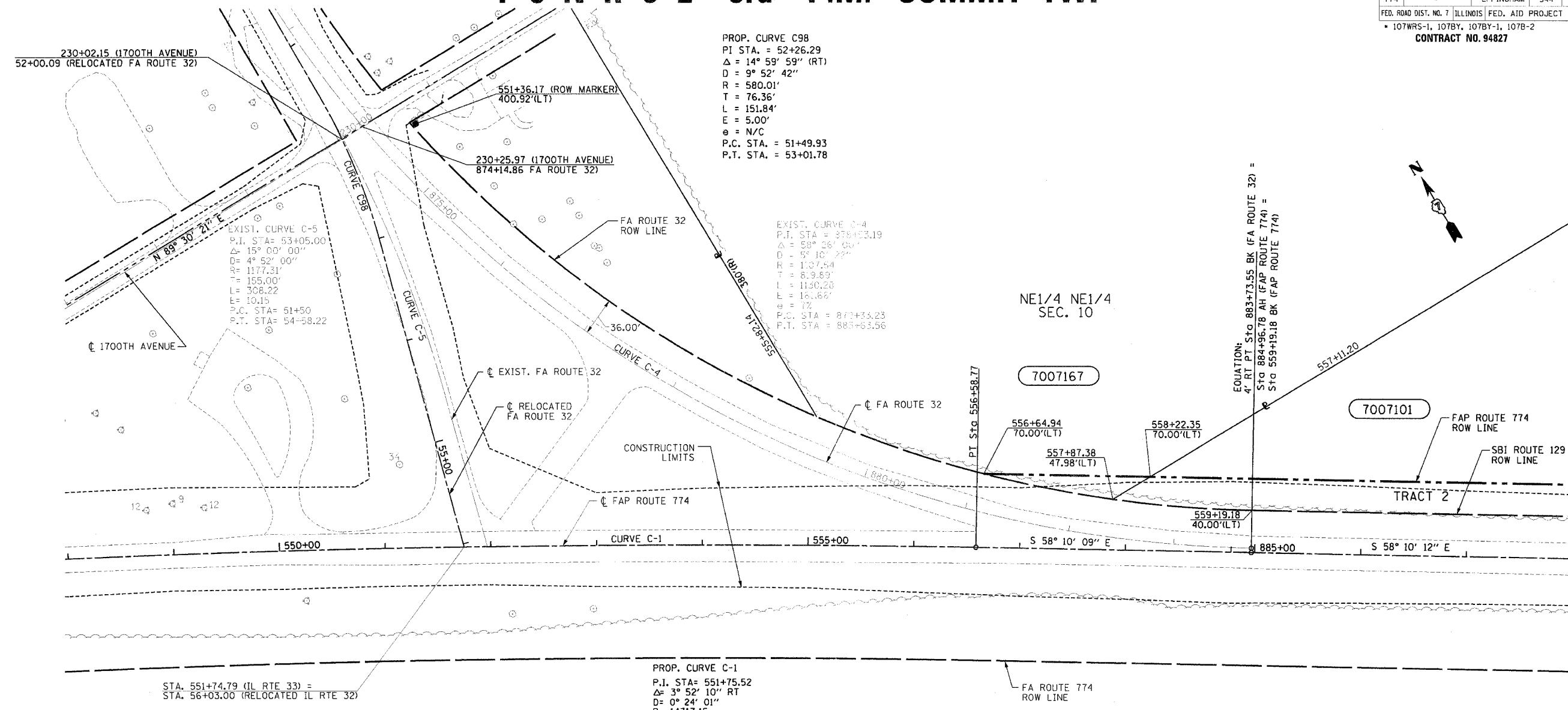
T 8 N-R 5 E 3rd P.M. SUMMIT TWP

F.A.P. RTE.	SECTION	COUNTY	TOTAL SHEETS	SHEET NO.
774	*	EFFINGHAM	344	332
FED. ROAD DIST. NO. 7 ILLINOIS FED. AID PROJECT				
* 107WRS-1, 107BY, 107BY-1, 107B-2				
CONTRACT NO. 94827				

SHEET NO. 3
15 SHEETS

10/17/02
0349503\ROW\ROWPLANS\4.DGN

1 2 3 4 5 6 7 8 9
10 11 12 13 14 15 16 17 18
19 20 21 22 23 24 25 26 27
28 29 30 31 32 33 34 35 36
37 38 39 40 41 42 43 44 45
46 47 48 49 50 51 52 53 54
55 56 57 58 59 60 61 62 63



PROP. CURVE C98
P.I. STA. = 52+26.29
Δ = 14° 59' 59" (RT)
D = 9° 52' 42"
R = 580.01'
T = 76.36'
L = 151.84'
E = 5.00'
e = N/C
P.C. STA. = 51+49.93
P.T. STA. = 53+01.78

EXIST. CURVE C-4
P.I. STA. = 878+33.19
Δ = 58° 26' 00"
D = 9° 10' 23"
R = 1,037.54
T = 83.99'
L = 1130.20'
E = 16.66'
e = 7%
P.C. STA. = 870+33.23
P.T. STA. = 883+63.56

EXIST. CURVE C-5
P.I. STA. = 53+05.00
Δ = 15° 00' 00"
D = 4° 52' 00"
R = 1177.31'
T = 155.00'
L = 308.22'
E = 10.15'
P.C. STA. = 51+50
P.T. STA. = 54+58.22

PROP. CURVE C-1
P.I. STA. = 551+75.52
Δ = 3° 52' 10" RT
D = 0° 24' 01"
R = 14317.15'
T = 483.62'
L = 966.87'
E = 8.17'
e = 1.56%
P.C. STA. = 546+91.90
P.T. STA. = 556+58.77

STA. 551+74.79 (IL RTE 33) =
STA. 56+03.00 (RELOCATED IL RTE 32)

UTILITIES:
TELEPHONE- ILLINOIS CONSOLIDATED TELEPHONE COMPANY
VERIZON NORTH INC.
GAS- AMEREN CIPS
ELECTRICITY- NORRIS ELECTRIC COOPERATIVE
AMEREN CIPS
WATER- E J WATER CORPORATION
LAKE SARA AREA WATER COOPERATIVE, INC.
CITY OF EFFINGHAM
SEWER- CITY OF EFFINGHAM
T.V. CABLE- AT & T MEDIA SERVICE

CONTRACT NO. 94827
FIELD BOOK NO 449, 450, 451,
452 & 452B
(R) RECORDED DISTANCE

PARCEL	OWNER	ADD AREA	EXIST. AREA TAKEN	EASEMENT	REM. AREA	INST	MICRO FILM NO RECORDED	DATE	BOOK	PAGE	AREA EXCESS	SOLD
7007101	JAMES H. SPORLEDER ET AL	40,276	5,957		3,631,876							
	TRACT 1	17,636	5,957		3,509,183							
	TRACT 2	22,640			122,693							
7007167	JAMES H. SPORLEDER	1,880			801,303							

NOTE: ALL AREAS ARE IN SQUARE FEET
UNLESS OTHERWISE NOTED.
NOTE: BEARINGS ARE REFERENCED TO THE
ILLINOIS STATE PLANE COORDINATE
SYSTEM EAST ZONE DATUM OF 1983

RIGHT OF WAY PLANS
FAP ROUTE 774
PROJECT SECTION 107WRS-1
107BY, 107BY-1
107B-2
STATION 548+00.00 TO
STATION 888+00.00
COUNTY EFFINGHAM
SCALE 1"=50' SHEET 3 OF 15

JOB NO. R-97-007-00

Z:\0349503\ROW\ROWPLANS\4.DGN 10/17/02 03:29:04 PM 332 OF 344