

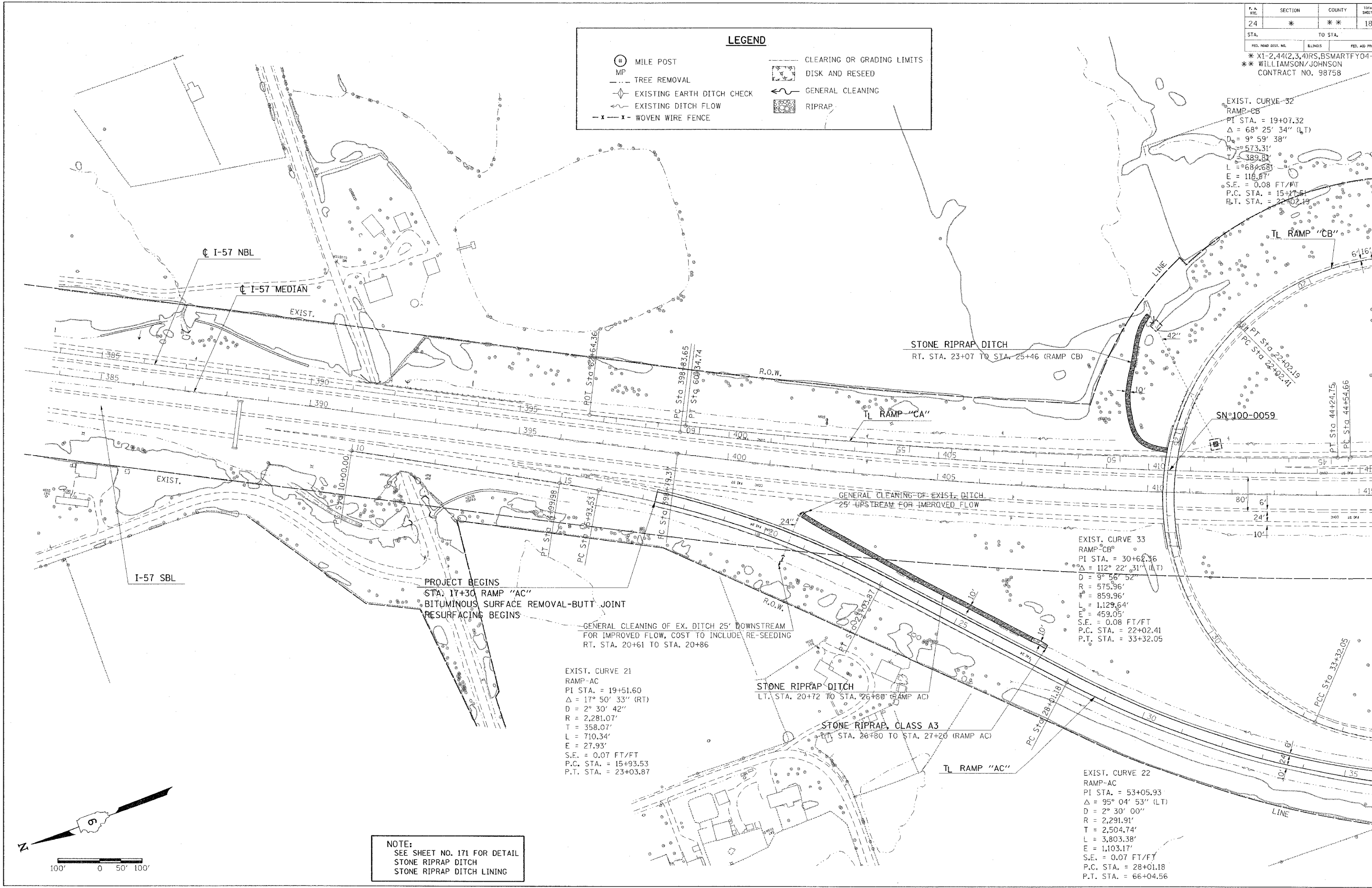
P.A. SHEET NO.	SECTION	COUNTY	TOTAL SHEETS	SHEET NO.
24	*	**	189	85

FED. ROAD DIST. NO.	ELIMOS	FED. AID PROJECT
		* X1-2,44(2,3,4)RS,BSMARTFY04-4 ** WILLIAMSON/JOHNSON CONTRACT NO. 98758

**LEGEND**

- (#) MILE POST
- MP TREE REMOVAL
- ◇ EXISTING EARTH DITCH CHECK
- ← EXISTING DITCH FLOW
- x - x - WOVEN WIRE FENCE
- CLEARING OR GRADING LIMITS
- ▣ DISK AND RESEED
- ~ GENERAL CLEANING
- ▨ RIPRAP



EXIST. CURVE 32  
RAMP-CB  
PI STA. = 19+07.32  
 $\Delta = 68^\circ 25' 34''$  (LT)  
D = 9° 59' 38"  
R = 573.31'  
T = 389.81'  
L = 684.68'  
E = 116.87'  
S.E. = 0.08 FT/FT  
P.C. STA. = 15+17.5  
P.T. STA. = 22+02.19

EXIST. CURVE 33  
RAMP-CB  
PI STA. = 30+62.36  
 $\Delta = 112^\circ 22' 31''$  (LT)  
D = 9° 56' 52"  
R = 575.96'  
T = 859.96'  
L = 1,129.64'  
E = 459.05'  
S.E. = 0.08 FT/FT  
P.C. STA. = 22+02.41  
P.T. STA. = 33+32.05

EXIST. CURVE 21  
RAMP-AC  
PI STA. = 19+51.60  
 $\Delta = 17^\circ 50' 33''$  (RT)  
D = 2° 30' 42"  
R = 2,281.07'  
T = 358.07'  
L = 710.34'  
E = 27.93'  
S.E. = 0.07 FT/FT  
P.C. STA. = 15+93.53  
P.T. STA. = 23+03.87

EXIST. CURVE 22  
RAMP-AC  
PI STA. = 53+05.93  
 $\Delta = 95^\circ 04' 53''$  (LT)  
D = 2° 30' 00"  
R = 2,291.91'  
T = 2,504.74'  
L = 3,803.38'  
E = 1,103.17'  
S.E. = 0.07 FT/FT  
P.C. STA. = 28+01.18  
P.T. STA. = 66+04.56

PROJECT BEGINS  
STA. 17+30 RAMP "AC"  
BITUMINOUS SURFACE REMOVAL-BUTT JOINT  
RESURFACING BEGINS

GENERAL CLEANING OF EX. DITCH 25' DOWNSTREAM  
FOR IMPROVED FLOW, COST TO INCLUDE RE-SEEDING  
RT. STA. 20+61 TO STA. 20+86

GENERAL CLEANING OF EXIST. DITCH  
25' UPSTREAM FOR IMPROVED FLOW

NOTE:  
SEE SHEET NO. 171 FOR DETAIL  
STONE RIPRAP DITCH  
STONE RIPRAP DITCH LINING

Monday, October 25, 2004, 4:46:50 PM  
c:\p\projects\98758\182\182.dwg  
PLANNING  
L:\1-15-2004\24-62  
L:\1-15-2004\24-62  
L:\1-15-2004\24-62

