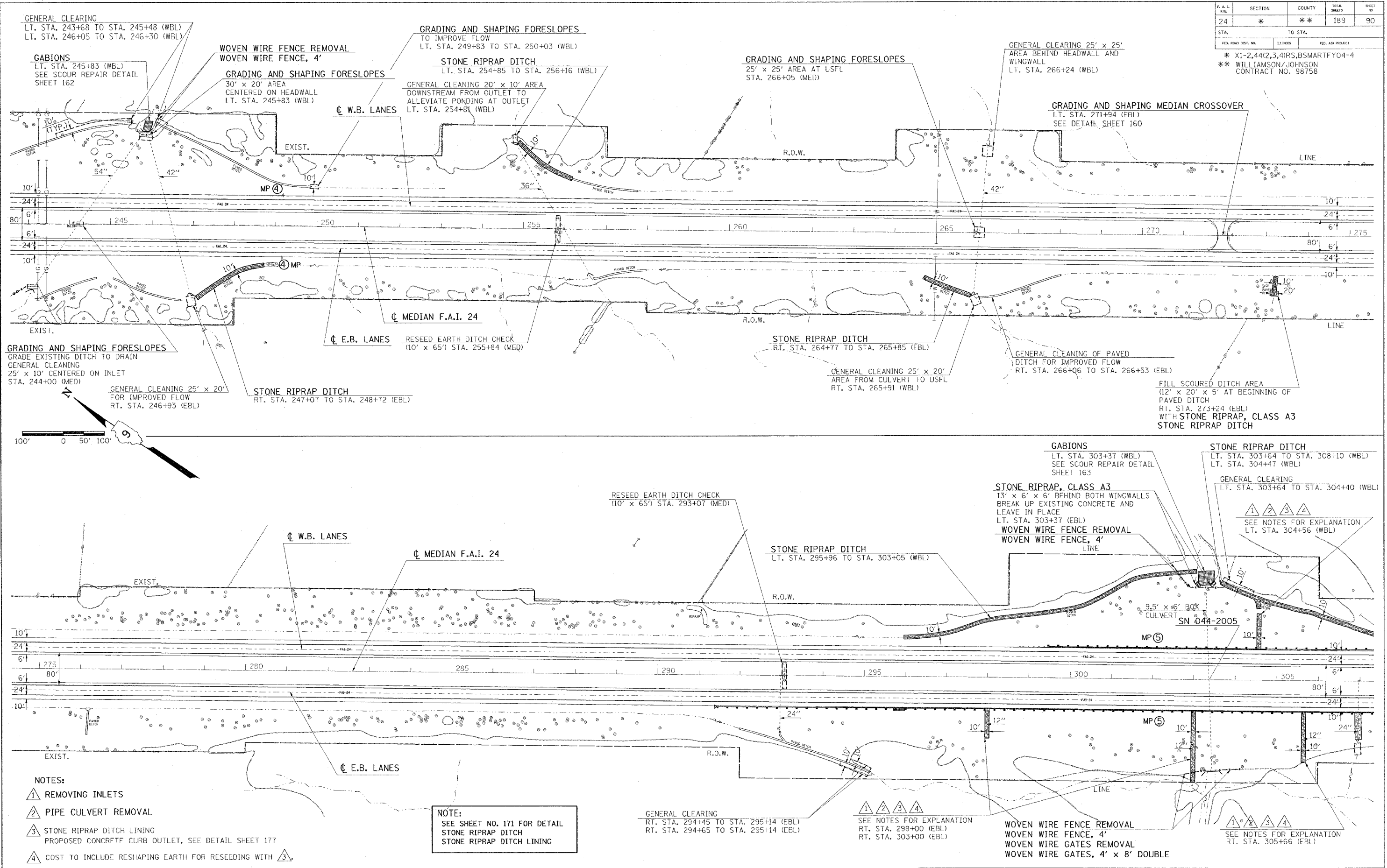


F.A.L. SHEET	SECTION	COUNTY	TOTAL SHEETS	SHEET NO.
24	*	**	189	90
STA. TO STA.				
FED. ROAD DIST. NO.		SUBDIVISION	FED. AID PROJECT	
			* X1-2,44(2,3,4)RS,BSMARTFY04-4	
			** WILLIAMSON/JOHNSON CONTRACT NO. 98758	



Monday November 15, 2004 @ 9:46:55 AM  
 c:\p\projects\9802102\9802102.dwg LV=2,4-26,22,24-47,59-63  
 105AA c:\p\projects\9802102\9802102.dwg LV=1-26,22,24-36,37-63  
 105TP c:\p\projects\9802102\9802102.dwg LV=1-26,22,24-36,37-63

- NOTES:
- 1 REMOVING INLETS
  - 2 PIPE CULVERT REMOVAL
  - 3 STONE RIPRAP DITCH LINING  
PROPOSED CONCRETE CURB OUTLET, SEE DETAIL SHEET 177
  - 4 COST TO INCLUDE RESHAPING EARTH FOR RESEEDING WITH 3.

NOTE:  
SEE SHEET NO. 171 FOR DETAIL  
STONE RIPRAP DITCH  
STONE RIPRAP DITCH LINING