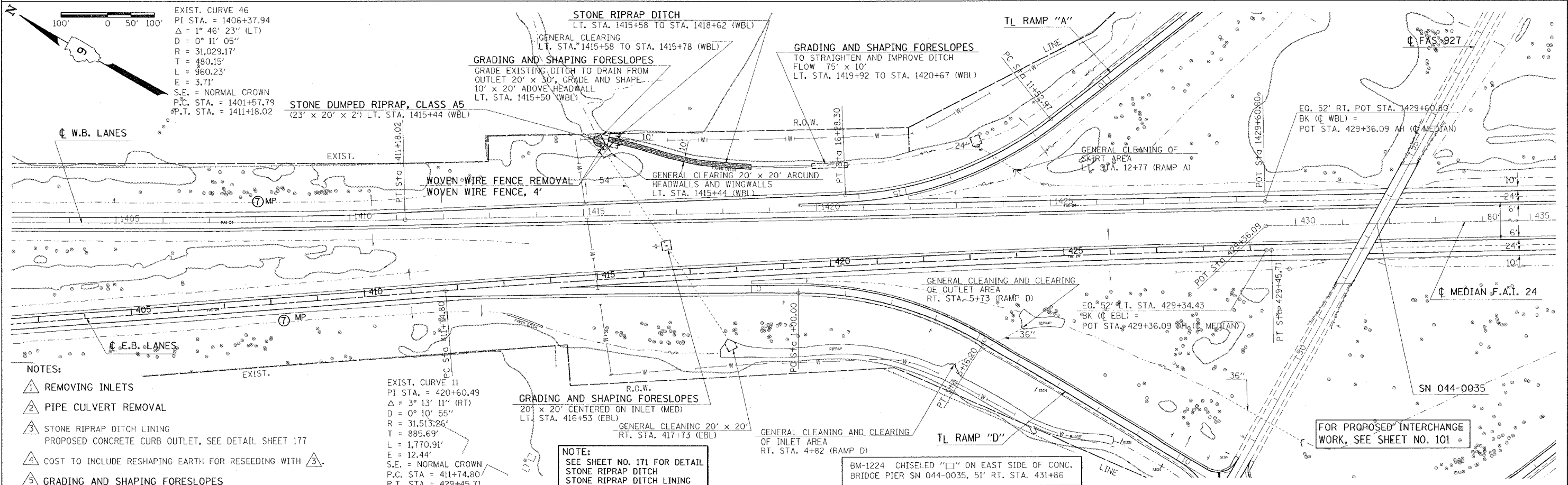
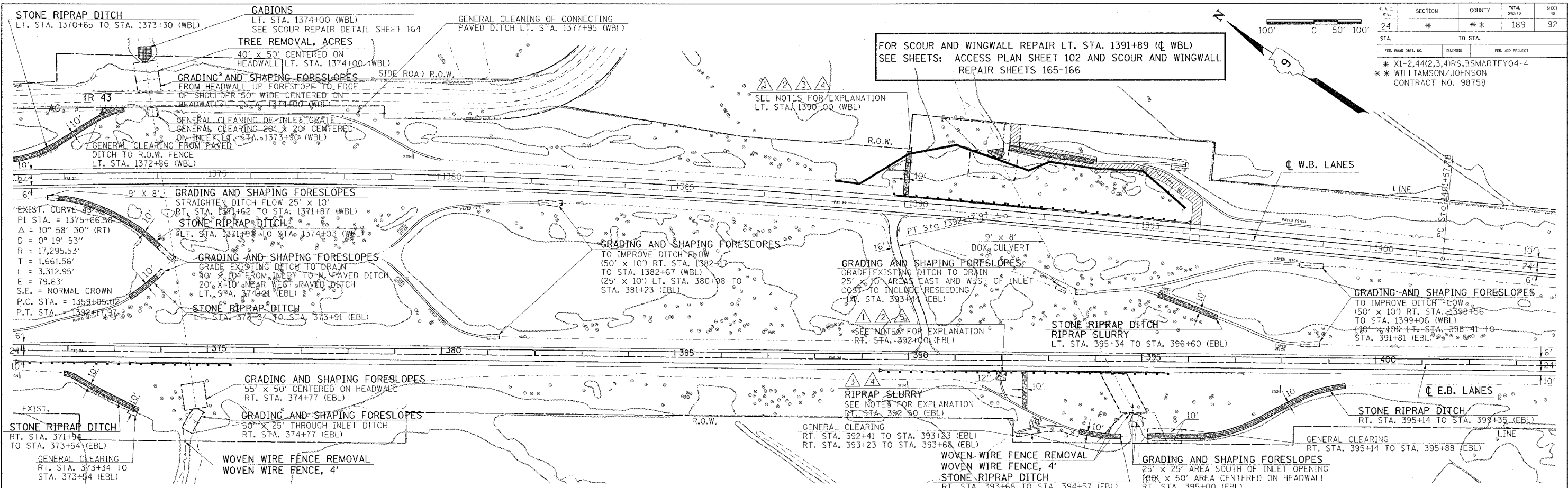


S.A.L. FILE	SECTION	COUNTY	TOTAL SHEETS	SHEET NO.
24	*	**	189	92

FED. PROJ. DIST. NO.	BILLNO.	FED. AID PROJECT
		* X1-2,44(2,3,4)RS.BSMARTFY04-4
		* WILLIAMSON/JOHNSON
		CONTRACT NO. 98758



- NOTES:**
- ▲ REMOVING INLETS
 - ▲ PIPE CULVERT REMOVAL
 - ▲ STONE RIPRAP DITCH LINING PROPOSED CONCRETE CURB OUTLET, SEE DETAIL SHEET 177
 - ▲ COST TO INCLUDE RESHAPING EARTH FOR RESEEDING WITH ▲
 - ▲ GRADING AND SHAPING FORESLOPES

EXIST. CURVE 11
PI STA. = 420+60.49
 $\Delta = 3^\circ 13' 11''$ (RT)
 $D = 0^\circ 10' 55''$
 $R = 31,513.26'$
 $T = 885.69'$
 $L = 1,770.91'$
 $E = 12.44'$
S.E. = NORMAL CROWN
P.C. STA. = 411+74.80
P.T. STA. = 429+45.71

NOTE:
SEE SHEET NO. 171 FOR DETAIL STONE RIPRAP DITCH STONE RIPRAP DITCH LINING