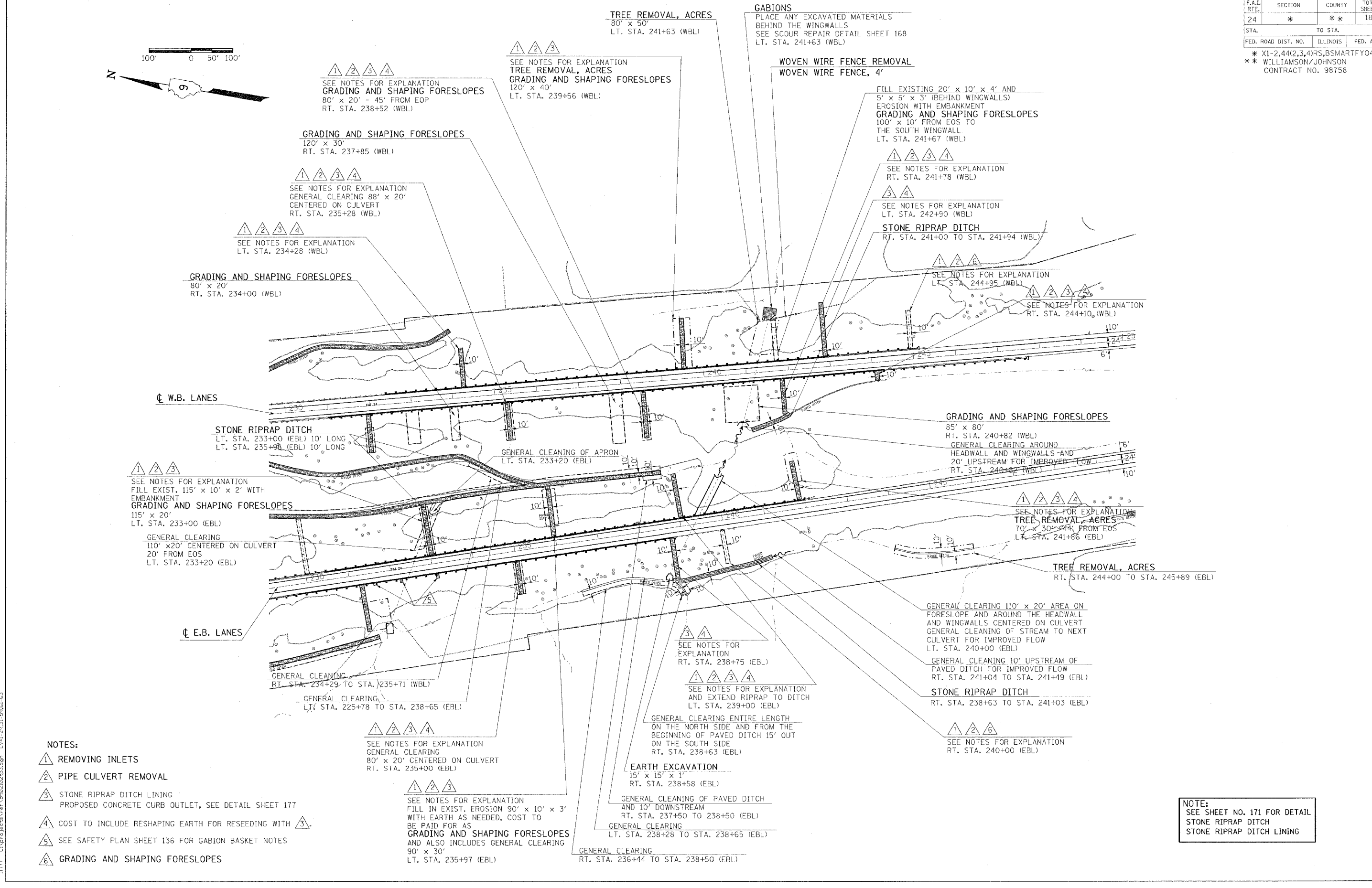
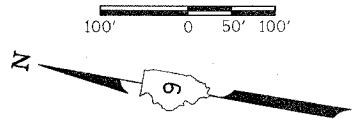


F.A.I. RTE.	SECTION	COUNTY	TOTAL SHEETS	SHEET NO.
24	*	**	189	99
STA. TO STA.		FED. AID PROJECT		
FED. ROAD DIST. NO.		ILLINOIS		
* X1-2,44(2,3,4)RS,BSMARTFY04-4 ** WILLIAMSON/JOHNSON CONTRACT NO. 98758				



TREE REMOVAL, ACRES
80' x 50'
LT. STA. 241+63 (WBL)

GABIONS
PLACE ANY EXCAVATED MATERIALS
BEHIND THE WINGWALLS
SEE SCOUR REPAIR DETAIL SHEET 168
LT. STA. 241+63 (WBL)

WOVEN WIRE FENCE REMOVAL
WOVEN WIRE FENCE, 4'

GRADING AND SHAPING FORESLOPES
120' x 30'
RT. STA. 237+85 (WBL)

SEE NOTES FOR EXPLANATION
TREE REMOVAL, ACRES
GRADING AND SHAPING FORESLOPES
120' x 40'
LT. STA. 239+56 (WBL)

SEE NOTES FOR EXPLANATION
GRADING AND SHAPING FORESLOPES
80' x 20' - 45' FROM EOP
RT. STA. 238+52 (WBL)

SEE NOTES FOR EXPLANATION
GENERAL CLEARING 88' x 20'
CENTERED ON CULVERT
RT. STA. 235+28 (WBL)

SEE NOTES FOR EXPLANATION
LT. STA. 234+28 (WBL)

GRADING AND SHAPING FORESLOPES
80' x 20'
RT. STA. 234+00 (WBL)

STONE RIPRAP DITCH
LT. STA. 233+00 (EBL) 10' LONG
LT. STA. 235+98 (EBL) 10' LONG

SEE NOTES FOR EXPLANATION
FILL EXIST. 115' x 10' x 2' WITH
EMBANKMENT
GRADING AND SHAPING FORESLOPES
115' x 20'
LT. STA. 233+00 (EBL)

GENERAL CLEARING
110' x 20' CENTERED ON CULVERT
20' FROM EOS
LT. STA. 233+20 (EBL)

GENERAL CLEANING OF APRON
LT. STA. 233+20 (EBL)

GRADING AND SHAPING FORESLOPES
85' x 80'
RT. STA. 240+82 (WBL)
GENERAL CLEARING AROUND
HEADWALL AND WINGWALLS AND
20' UPSTREAM FOR IMPROVED FLOW
RT. STA. 240+82 (WBL)

SEE NOTES FOR EXPLANATION
TREE REMOVAL, ACRES
70' x 30' FROM EOS
LT. STA. 241+86 (EBL)

TREE REMOVAL, ACRES
RT. STA. 244+00 TO STA. 245+89 (EBL)

GENERAL CLEARING 110' x 20' AREA ON
FORESLOPE AND AROUND THE HEADWALL
AND WINGWALLS CENTERED ON CULVERT
GENERAL CLEANING OF STREAM TO NEXT
CULVERT FOR IMPROVED FLOW
LT. STA. 240+00 (EBL)

GENERAL CLEANING 10' UPSTREAM OF
PAVED DITCH FOR IMPROVED FLOW
RT. STA. 241+04 TO STA. 241+49 (EBL)

STONE RIPRAP DITCH
RT. STA. 238+63 TO STA. 241+03 (EBL)

SEE NOTES FOR EXPLANATION
RT. STA. 240+00 (EBL)

SEE NOTES FOR EXPLANATION
GENERAL CLEARING
80' x 20' CENTERED ON CULVERT
RT. STA. 235+00 (EBL)

SEE NOTES FOR EXPLANATION
GENERAL CLEARING
110' x 20' CENTERED ON CULVERT
WITH EARTH AS NEEDED, COST TO
BE PAID FOR AS
GRADING AND SHAPING FORESLOPES
AND ALSO INCLUDES GENERAL CLEARING
90' x 30'
LT. STA. 235+97 (EBL)

SEE NOTES FOR EXPLANATION
GENERAL CLEARING
15' x 15' x 1'
RT. STA. 238+58 (EBL)

EARTH EXCAVATION
15' x 15' x 1'
RT. STA. 238+58 (EBL)

GENERAL CLEANING OF PAVED DITCH
AND 10' DOWNSTREAM
RT. STA. 237+50 TO 238+50 (EBL)

GENERAL CLEARING
LT. STA. 238+28 TO STA. 238+65 (EBL)

GENERAL CLEARING
RT. STA. 236+44 TO STA. 238+50 (EBL)

SEE NOTES FOR EXPLANATION
RT. STA. 238+75 (EBL)

SEE NOTES FOR EXPLANATION
AND EXTEND RIPRAP TO DITCH
LT. STA. 239+00 (EBL)

GENERAL CLEARING ENTIRE LENGTH
ON THE NORTH SIDE AND FROM THE
BEGINNING OF PAVED DITCH 15' OUT
ON THE SOUTH SIDE
RT. STA. 238+63 (EBL)

- NOTES:**
- ① REMOVING INLETS
 - ② PIPE CULVERT REMOVAL
 - ③ STONE RIPRAP DITCH LINING
PROPOSED CONCRETE CURB OUTLET, SEE DETAIL SHEET 177
 - ④ COST TO INCLUDE RESHAPING EARTH FOR RESEEDING WITH ③
 - ⑤ SEE SAFETY PLAN SHEET 136 FOR GABION BASKET NOTES
 - ⑥ GRADING AND SHAPING FORESLOPES

NOTE:
SEE SHEET NO. 171 FOR DETAIL
STONE RIPRAP DITCH
STONE RIPRAP DITCH LINING

Wednesday, November 24, 2004 @ 11:55:16 AM
 c:\projects\11021\02\01\02\02\22.dgn LV:2,4 4/20/24-47:09:63
 C:\Program Files\Foxit Software\Foxit Reader\Foxit Reader.exe LV:1 1/29/24-21:56:51