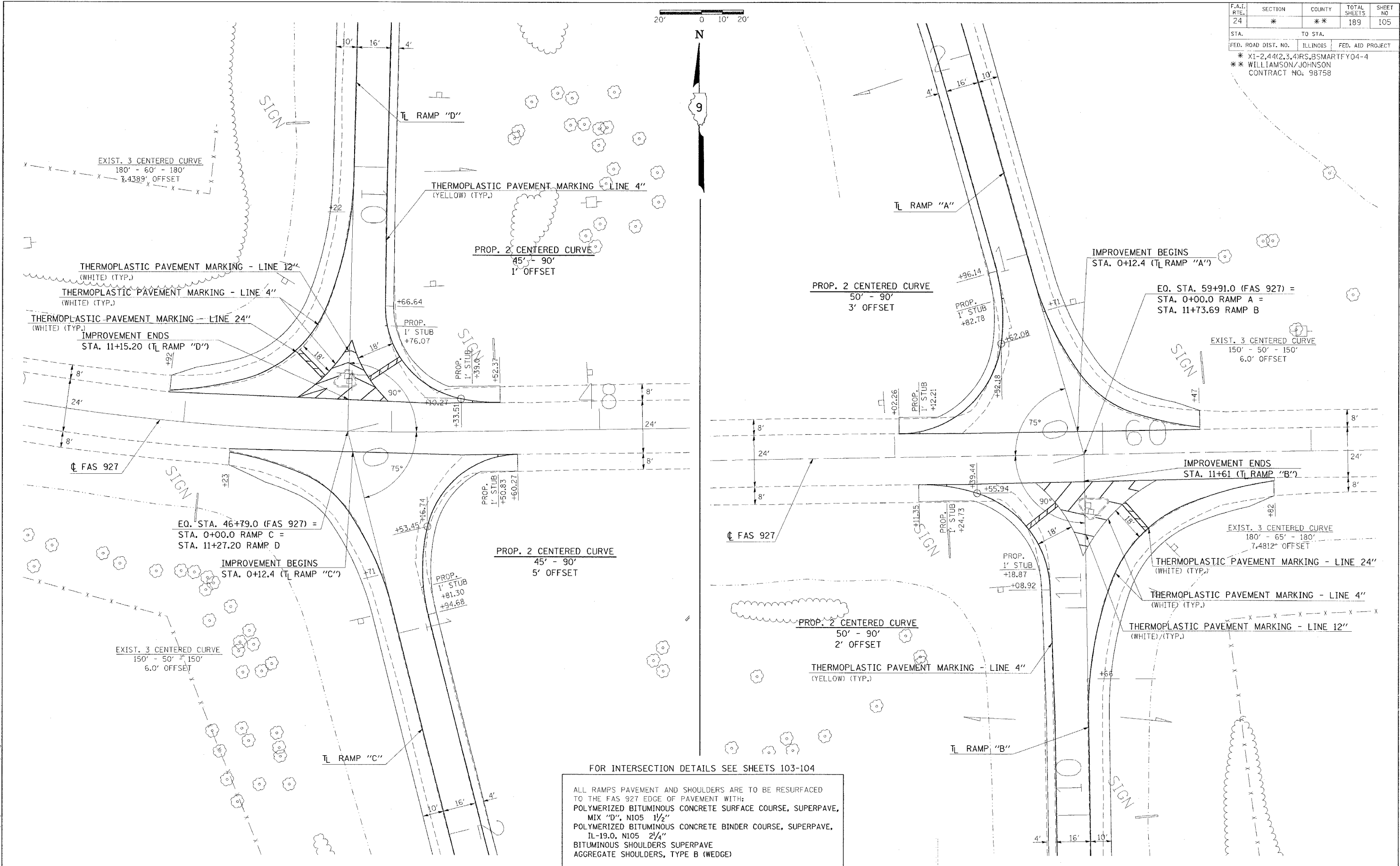


F.A.I. RTE.	SECTION	COUNTY	TOTAL SHEETS	SHEET NO
24	*	**	189	105
STA.		TO STA.		
FED. ROAD DIST. NO.		ILLINOIS	FED. AID PROJECT	
		* X1-2,44(2,3,4)RS,BSMARTFY04-4		
		** WILLIAMSON/JOHNSON		
		CONTRACT NO. 98758		



FOR INTERSECTION DETAILS SEE SHEETS 103-104

ALL RAMP'S PAVEMENT AND SHOULDERS ARE TO BE RESURFACED TO THE FAS 927 EDGE OF PAVEMENT WITH:  
 POLYMERIZED BITUMINOUS CONCRETE SURFACE COURSE, SUPERPAVE, MIX "D", N105 1 1/2"  
 POLYMERIZED BITUMINOUS CONCRETE BINDER COURSE, SUPERPAVE, 1L-19.0, N105 2 1/4"  
 BITUMINOUS SHOULDERS SUPERPAVE  
 AGGREGATE SHOULDERS, TYPE B (WEDGE)

Tuesday, October 26, 2004 8:42:37 AM  
 c:\p\projects\103\105\105.dwg, LV:2-28,22,24,28,38-53  
 INTCAD c:\p\projects\103\105\105.dwg, LV:2-28,22,24,28,38-53  
 927TAB c:\p\projects\103\105\105.dwg, LV:1-5,7,9,22,24-42,44,46-48,50-53,55-63  
 INTAB c:\p\projects\103\105\105.dwg, LV:1-5,7,9,22,24-42,44,46-48,50-53,55-63