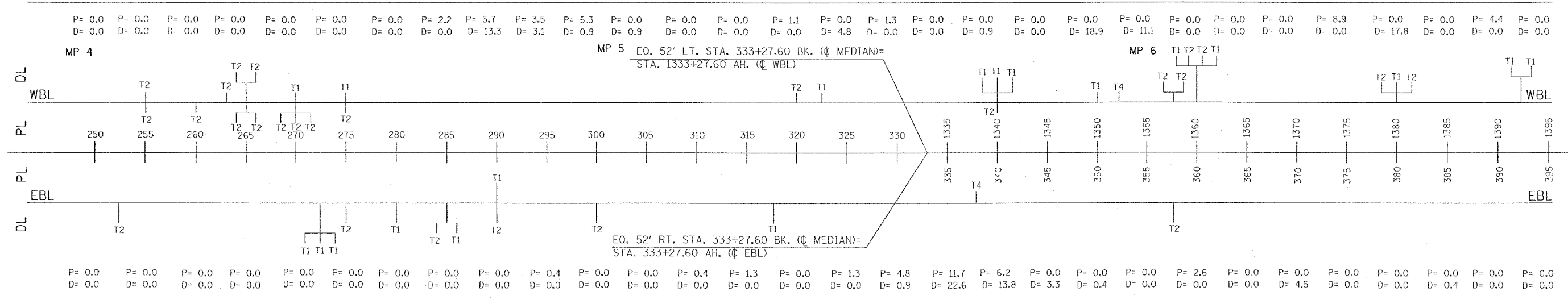
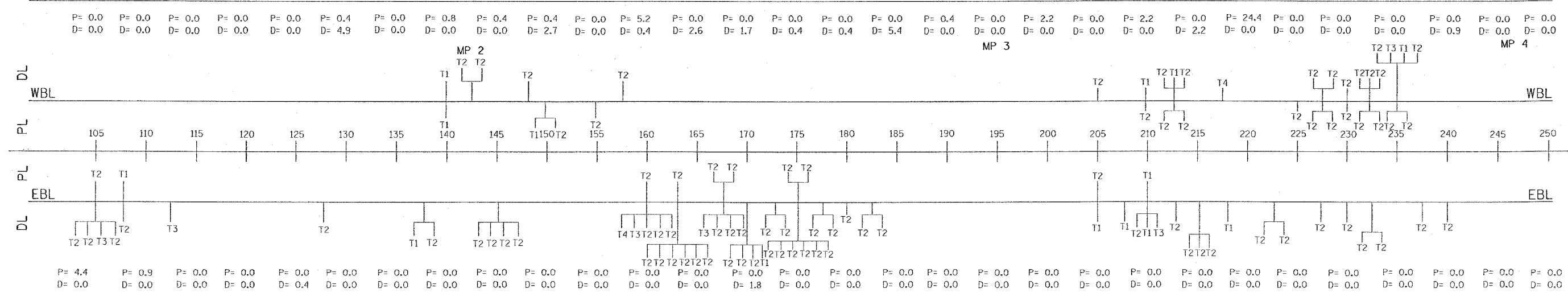


P.A.L. REV.	SECTION	COUNTY	TOTAL SHEETS	SHEET NO.
24	*	**	189	106
STA.		TO STA.		
FED. ROAD DIST. NO.		BLINDS	FED. AID PROJECT	
* X1-2,44(2,3,4)RS,BSMARTFY04-4				
** WILLIAMSON/JOHNSON				
CONTRACT NO. 98758				



LEGEND:

WBL = WESTBOUND LANES
 EBL = EASTBOUND LANES
 P = PARTIAL DEPTH PATCHING QUANTITY, PASSING LANE, UNITS OF SQ. YD.
 D = PARTIAL DEPTH PATCHING QUANTITY, DRIVING LANE, UNITS OF SQ. YD.

T1 } FULL DEPTH
 T2 } PATCHING TYPE
 T3 }
 T4 }

PATCHING SURVEY DATE:

THIS INFORMATION IS BASED ON THE BEST INFORMATION AVAILABLE AT THE TIME OF PLAN PREPARATION. THE ENGINEER WILL DETERMINE ACTUAL PATCH LIMIT, LOCATIONS AND FINAL PATCHING QUANTITIES.

Monday, December 13, 2004 4:53:41 AM
 c:\p\proj\102\102\102\102.dwg L:\1-63