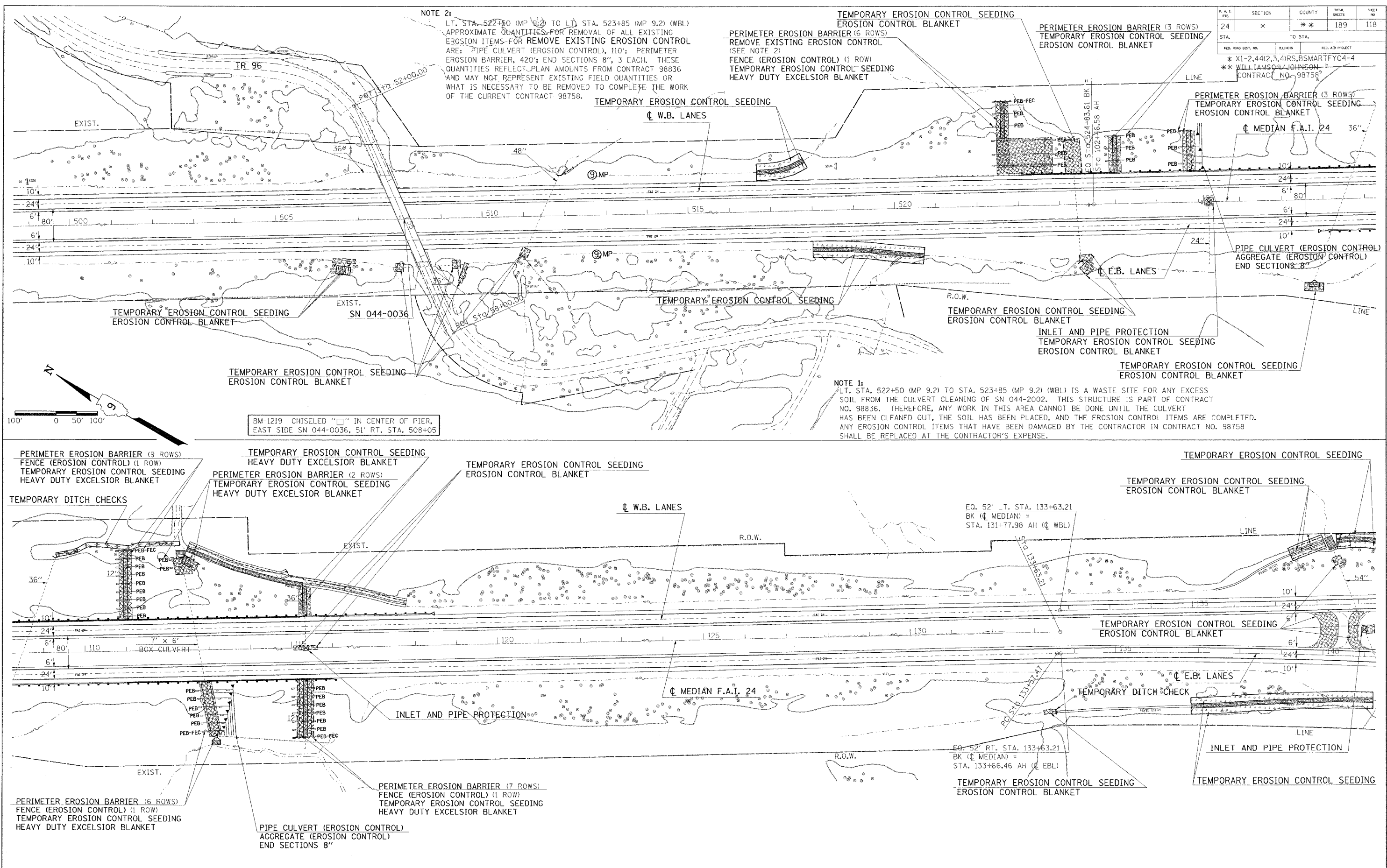


Friday, October 29, 2004 8:06:44 AM
 c:\projects\98758\102\102.dwg L:\2-46-35\37-47\52-63
 11344 c:\projects\98758\102\102.dwg L:\2-46-35\37-47\52-63
 11344 c:\projects\98758\102\102.dwg L:\2-46-35\37-47\52-63

Friday, October 29, 2004 8:06:44 AM
 c:\projects\98758\102\102.dwg L:\2-46-35\37-47\52-63
 11344 c:\projects\98758\102\102.dwg L:\2-46-35\37-47\52-63
 11344 c:\projects\98758\102\102.dwg L:\2-46-35\37-47\52-63



NOTE 2:
 LT. STA. 522+50 (MP 9.2) TO LT. STA. 523+85 (MP 9.2) (WBL)
 APPROXIMATE QUANTITIES FOR REMOVAL OF ALL EXISTING
 EROSION ITEMS FOR REMOVE EXISTING EROSION CONTROL
 ARE: PIPE CULVERT (EROSION CONTROL), 110'; PERIMETER
 EROSION BARRIER, 420'; END SECTIONS 8", 3 EACH. THESE
 QUANTITIES REFLECT PLAN AMOUNTS FROM CONTRACT 98836
 AND MAY NOT REPRESENT EXISTING FIELD QUANTITIES OR
 WHAT IS NECESSARY TO BE REMOVED TO COMPLETE THE WORK
 OF THE CURRENT CONTRACT 98758.

TEMPORARY EROSION CONTROL SEEDING
EROSION CONTROL BLANKET
PERIMETER EROSION BARRIER (6 ROWS)
REMOVE EXISTING EROSION CONTROL
(SEE NOTE 2)
FENCE (EROSION CONTROL) (1 ROW)
TEMPORARY EROSION CONTROL SEEDING
HEAVY DUTY EXCELSIOR BLANKET

PERIMETER EROSION BARRIER (3 ROWS)
TEMPORARY EROSION CONTROL SEEDING
EROSION CONTROL BLANKET

PERIMETER EROSION BARRIER (3 ROWS)
TEMPORARY EROSION CONTROL SEEDING
EROSION CONTROL BLANKET

F.A.I. P.C.	SECTION	COUNTY	TOTAL SHEETS	SHEET NO.
24	*	**	189	118

STA. TO STA.
 FED. ROAD DIST. NO. BLINDS FED. AID PROJECT
 * X1-2,44(2,3,4)RS.BSMARTFY04-4
 ** WILLIAMSON/JOHNSON
 CONTRACT NO. 98758

NOTE 1:
 LT. STA. 522+50 (MP 9.2) TO STA. 523+85 (MP 9.2) (WBL) IS A WASTE SITE FOR ANY EXCESS
 SOIL FROM THE CULVERT CLEANING OF SN 044-2002. THIS STRUCTURE IS PART OF CONTRACT
 NO. 98836. THEREFORE, ANY WORK IN THIS AREA CANNOT BE DONE UNTIL THE CULVERT
 HAS BEEN CLEANED OUT, THE SOIL HAS BEEN PLACED, AND THE EROSION CONTROL ITEMS ARE COMPLETED.
 ANY EROSION CONTROL ITEMS THAT HAVE BEEN DAMAGED BY THE CONTRACTOR IN CONTRACT NO. 98758
 SHALL BE REPLACED AT THE CONTRACTOR'S EXPENSE.

BM-1219 CHISELED "□" IN CENTER OF PIER,
 EAST SIDE SN 044-0036, 51' RT. STA. 508+05

EQ. 52' LT. STA. 133+63.21
 BK (☉ MEDIAN) =
 STA. 131+77.98 AH (☉ WBL)

EQ. 52' RT. STA. 133+63.21
 BK (☉ MEDIAN) =
 STA. 133+66.46 AH (☉ EBL)