

100' 0 50' 100'

EXIST. CURVE 8  
 PI STA. = 172+61.16  
 $\Delta = 26^\circ 16' 38''$  (RT)  
 $D = 0^\circ 40' 03''$   
 $R = 8,582.65'$   
 $T = 2,003.34'$   
 $L = 3,936.19'$   
 $E = 230.71'$   
 $S.E. = 0.02$  FT/FT  
 P.C. STA. = 152+57.83  
 P.T. STA. = 191+94.02

BM-1213 CHISELED "□" ON NW WINGWALL,  
 SN 044-0038, 19' W. OF  $\bar{C}$  WBL, STA. 186+92

F. A. L. SHEET	SECTION	COUNTY	TOTAL SHEETS	SHEET NO.
24	*	**	189	120

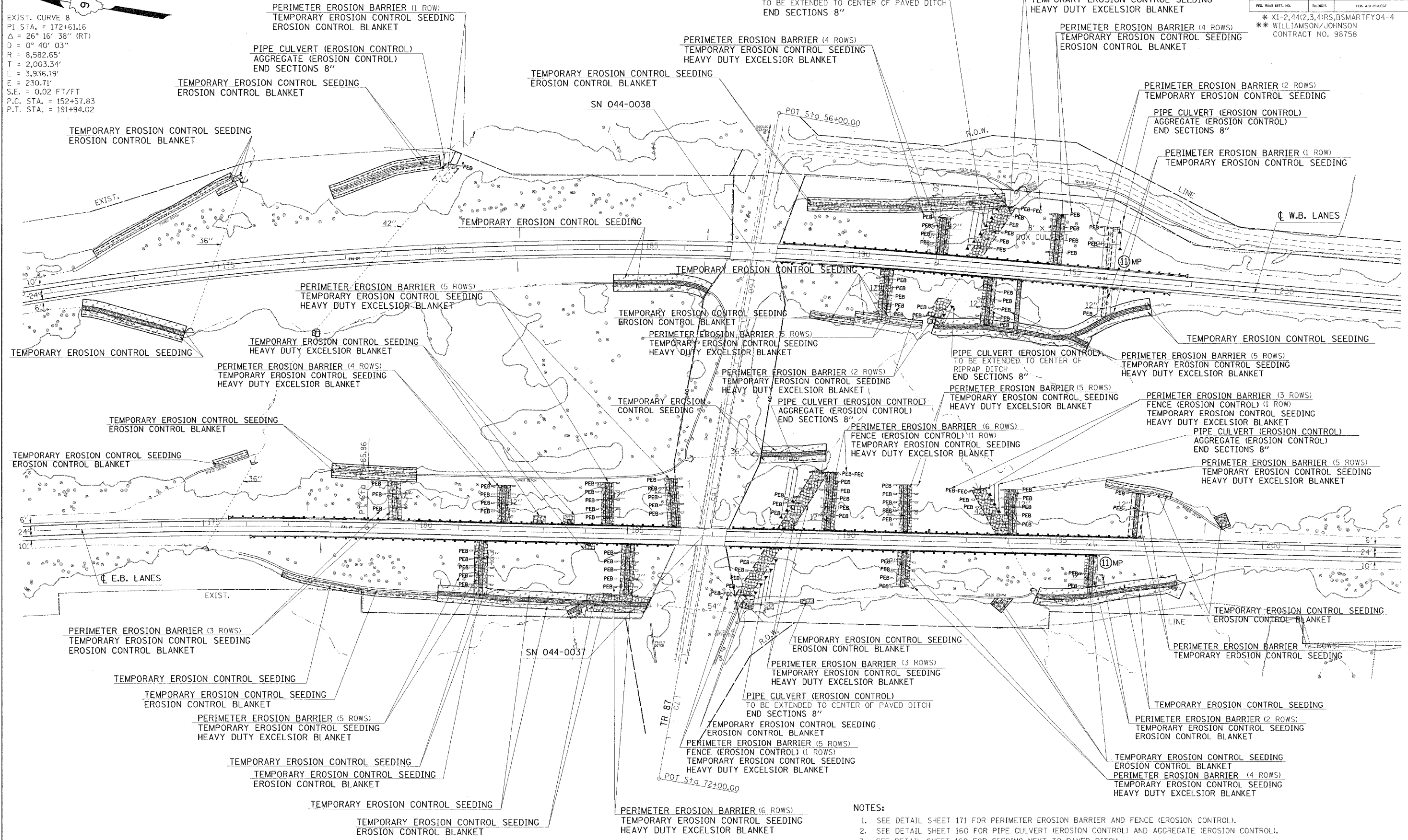
  

STA.	TO STA.

FED. ROAD DIST. NO.	BILLINGS	FED. AID PROJECT

\* X1-2,44(2,3,4)RS,BSMARTFY04-4  
 \*\* WILLIAMSON/JOHNSON  
 CONTRACT NO. 98758



- NOTES:
- SEE DETAIL SHEET 171 FOR PERIMETER EROSION BARRIER AND FENCE (EROSION CONTROL).
  - SEE DETAIL SHEET 160 FOR PIPE CULVERT (EROSION CONTROL) AND AGGREGATE (EROSION CONTROL).
  - SEE DETAIL SHEET 160 FOR SEEDING NEXT TO PAVED DITCH.

**TEMPORARY EROSION CONTROL STA. 171+00 TO STA. 202+00**

Wednesday, October 27, 2004, 6:25:35 PM  
 c:\projects\1042102\1042102.dgn LV:2,4,6-36,37-47,52-63  
 c:\projects\1042102\1042102.dgn LV:1,19,21,35,37-42,44-49,51-62  
 c:\projects\1042102\1042102.dgn LV:1-25,31-35,61-63  
 1154A  
 1151P