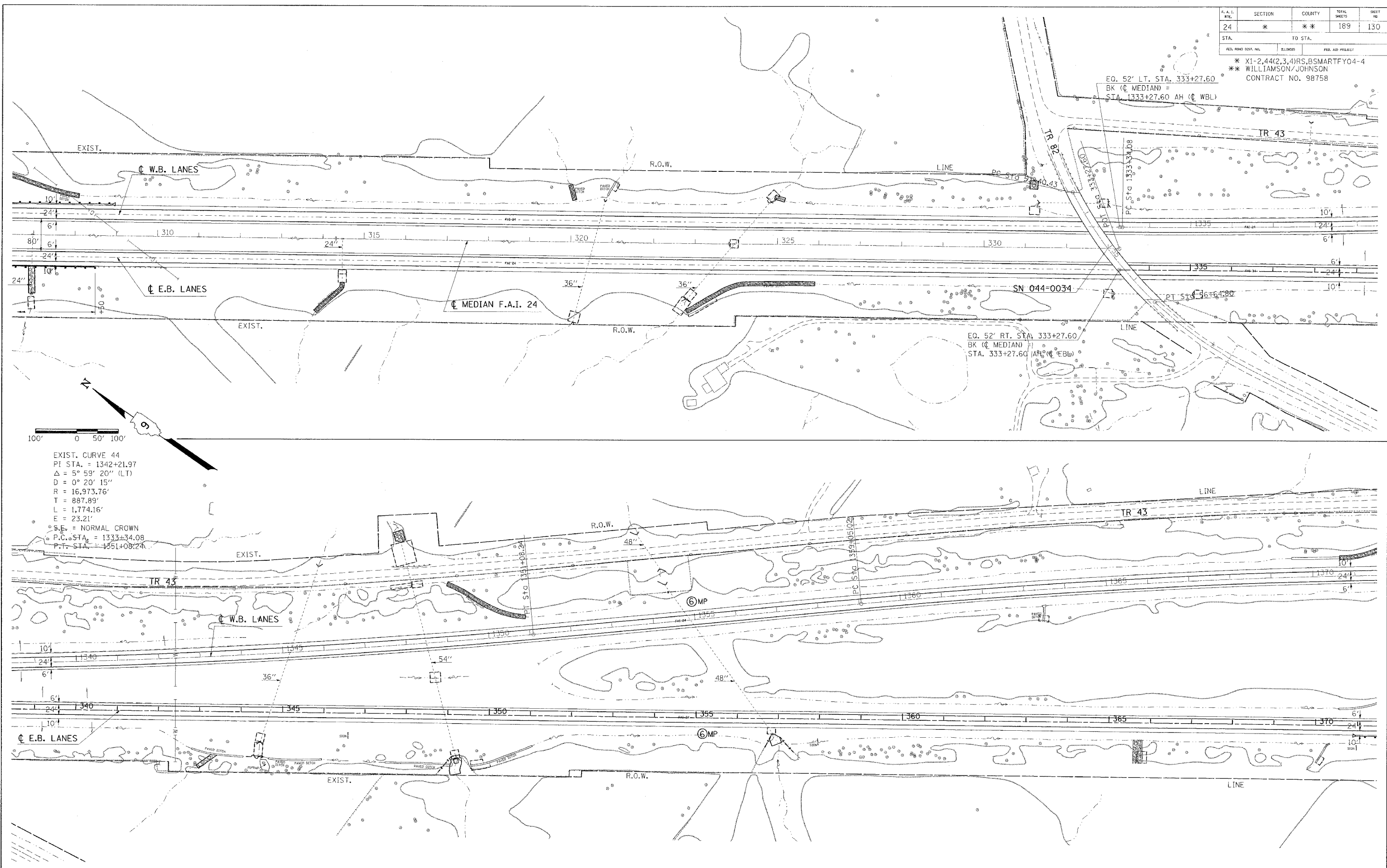


P.A.L. RTE.	SECTION	COUNTY	TOTAL SHEETS	SHEET NO.
24	*	**	189	130
STA.	TO STA.			
1330	1370			
FED. ROAD DIST. NO.	BILLINGS	FED. AID PROJECT		

* X1-2,44(2,3,4)RS.BSMARTFY04-4
 ** WILLIAMSON/JOHNSON
 CONTRACT NO. 98758

EQ. 52' LT. STA. 333+27.60
 BK (C MEDIAN) =
 STA. 1333+27.60 AH (C WBL)

EQ. 52' RT. STA. 333+27.60
 BK (C MEDIAN) =
 STA. 333+27.60 AH (C EBL)



Thursday, October 28, 2004 8:10:17 AM
 c:\projects\9822\24\9822\102\plan.dwg LV=2,4-20,22,24-35,37-49,52-63
 1066A C:\projects\9822\24\9822\102\plan.dwg LV=2,4-20,22,24-35,37-49,52-63
 1067 C:\projects\9822\24\9822\102\plan.dwg LV=2,4-20,22,24-35,37-49,52-63

Thursday, October 28, 2004 8:10:17 AM
 c:\projects\9822\24\9822\102\plan.dwg LV=2,4-20,22,24-35,37-49,52-63
 1074A C:\projects\9822\24\9822\102\plan.dwg LV=2,4-20,22,24-35,37-49,52-63
 1074B C:\projects\9822\24\9822\102\plan.dwg LV=2,4-20,22,24-35,37-49,52-63