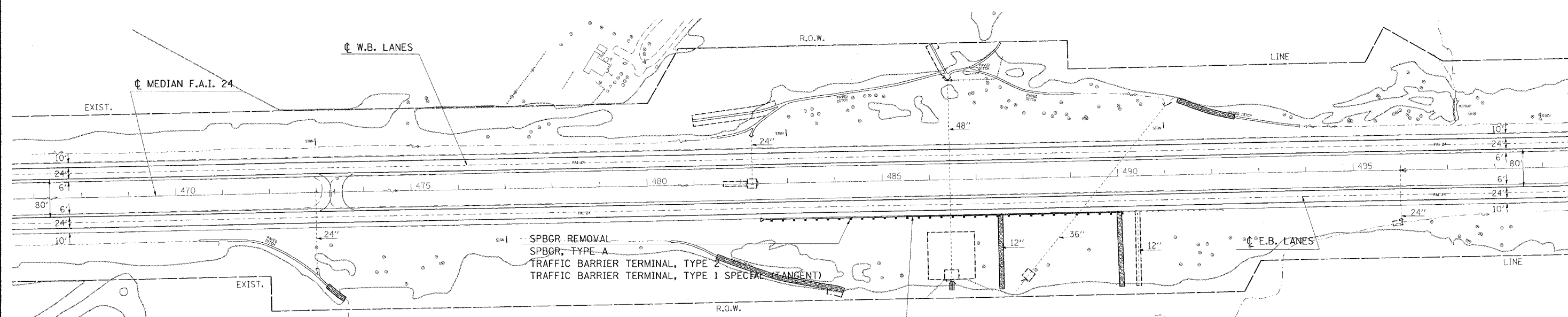
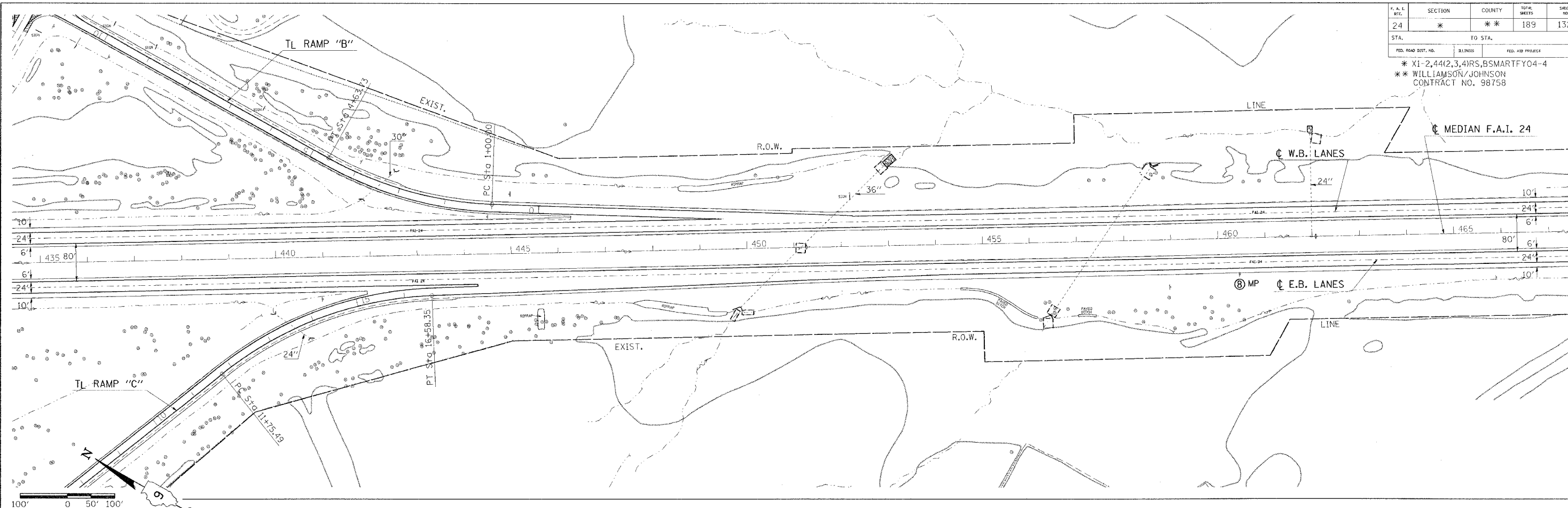


F.A.L. MILE	SECTION	COUNTY	TOTAL SHEETS	SHEET NO.
24	*	**	189	132
STA.	TO STA.			
FED. ROAD DIST. NO.	BLINDS	FED. AID PROJECT		
* XI-2,44(2,3,4)RS,BSMARTFY04-4				
** WILLIAMSON/JOHNSON				
CONTRACT NO. 98758				



- SPBGR. REMOVAL
- SPBGR, TYPE A
- TRAFFIC BARRIER TERMINAL, TYPE 2
- TRAFFIC BARRIER TERMINAL, TYPE 1 SPECIAL (TANGENT)

BITUMINOUS CURB REMOVAL RT. STA. 485+50 TO STA. 490+60 (EBL)
 REPLACE WITH COMBINATION CONCRETE CURB AND GUTTER, TYPE M-6.12
 RT. STA. 485+50 TO STA. 490+00 (EBL) BACKFILL BEHIND CURB WITH
 STONE RIPRAP, CLASS A3
 SEE TYPICAL SECTION SHEET 8

Thursday October 28, 2010 4:20:53 PM
 C:\projects\102102.dwg LV:2,4,6-20,22,24-35,37-49,52-55,58-63
 11044 C:\projects\102102.dwg LV:2,4,6-20,22,24-35,37-49,52-55,58-63
 110TP C:\projects\102102.dwg LV:2,4,6-20,22,24-35,37-49,52-55,58-63

Thursday October 28, 2010 4:20:53 PM
 C:\projects\102102.dwg LV:2,4,6-20,22,24-35,37-49,52-55,58-63
 11144 C:\projects\102102.dwg LV:2,4,6-20,22,24-35,37-49,52-55,58-63
 111TP C:\projects\102102.dwg LV:2,4,6-20,22,24-35,37-49,52-55,58-63