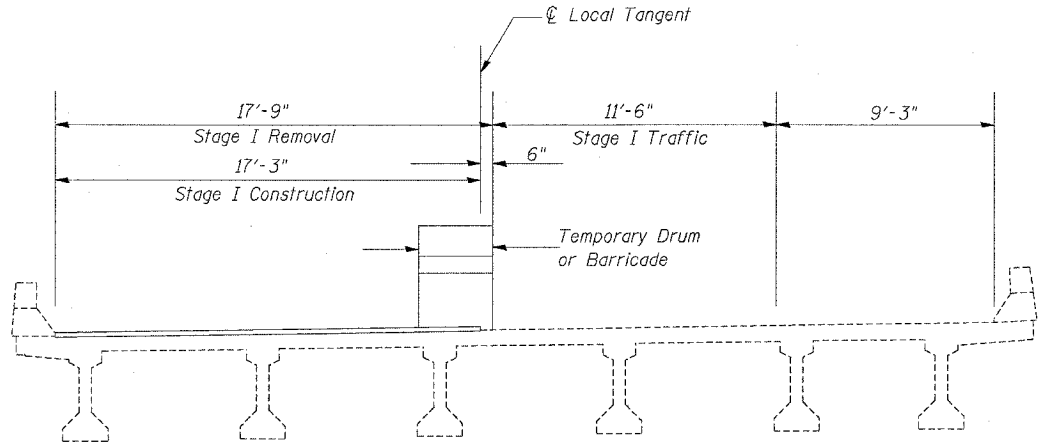


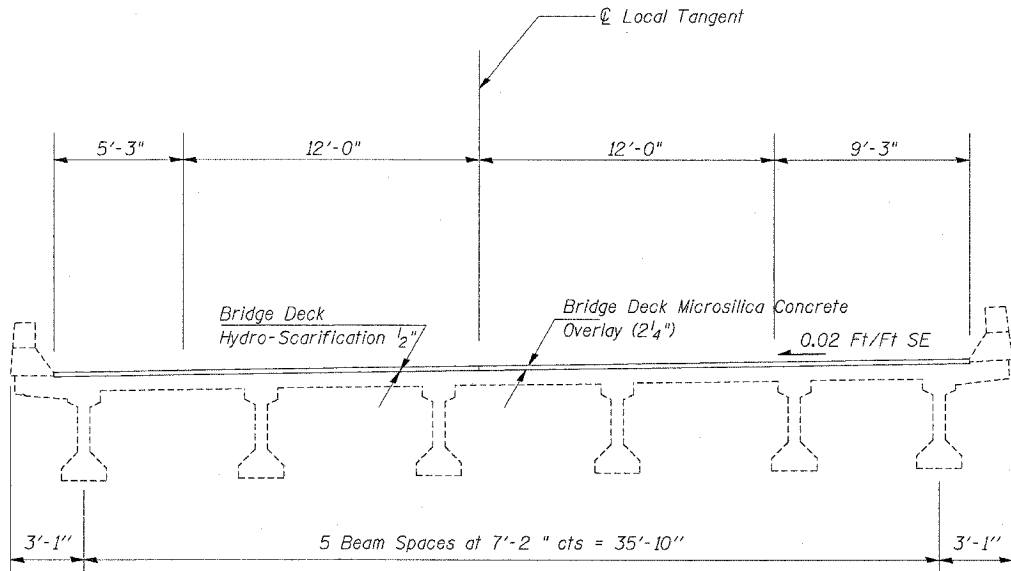
STATE OF ILLINOIS  
DEPARTMENT OF TRANSPORTATION

SHEET 4 OF 6

F.A.S. NO.	SECTION	COUNTY	TOTAL SHEETS	SHEET NO.
24	*	**	189	146
STA.	TO STA.			
FED. ROAD DIST. NO.	ELLINGS	FED. AID PROJECT		
* X1-2.44(2.3.4)RS.BSMARTFY04-4				
** WILLIAMSON/JOHNSON				
CONTRACT NO. 98758				

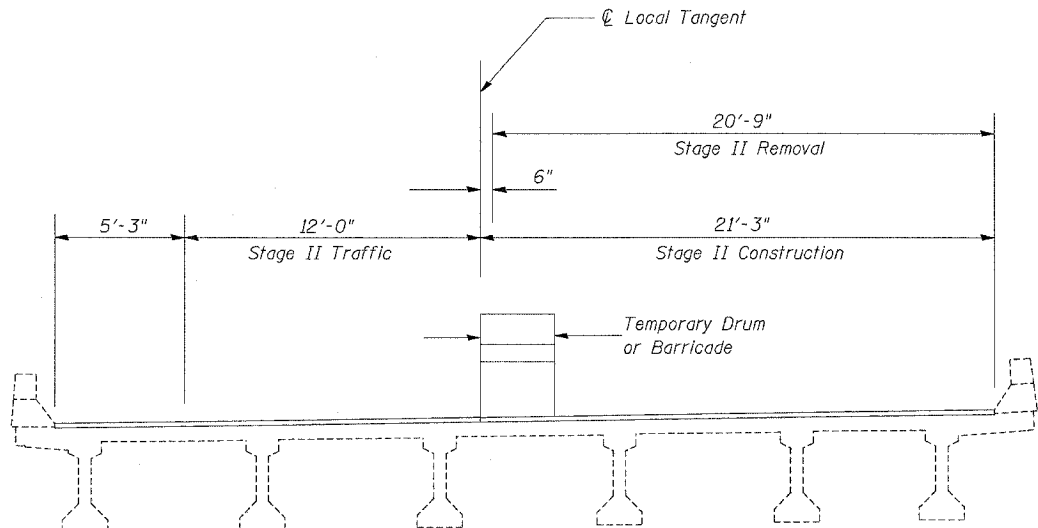


STAGE I



TYPICAL CROSS SECTION

(Proposed cross slope matches the existing 0.02 Ft/Ft SE)



STAGE II

Notes: Cross sections are looking in direction of traffic.

The temporary drums or barricades shall be located as shown on this sheet except when workers are present, when they may be temporarily moved over 2'-0" shifting traffic onto the existing bituminous shoulders.

DESIGNED	TWH MAS
CHECKED	MAS
DRAWN	LD TWH
CHECKED	TWH MAS

STAGE CONSTRUCTION DETAILS  
JOHNSON COUNTY  
SN 044-0038 (WB)