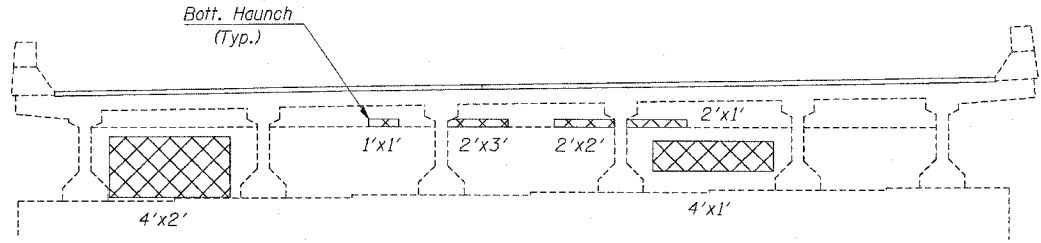


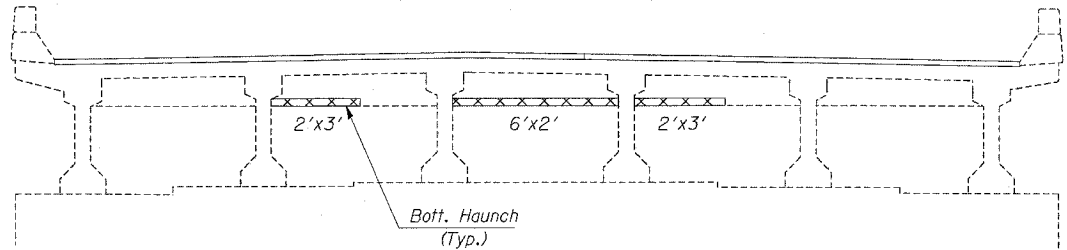
STATE OF ILLINOIS  
DEPARTMENT OF TRANSPORTATION

SHEET 6 OF 6

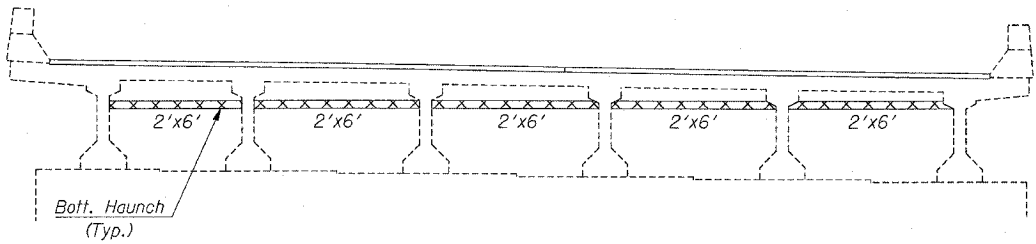
P.A. DIST. NO.	SECTION	COUNTY	TOTAL SHEETS	SHEET NO.
24	*	**	189	148
STA.		TO STA.		
FED. ROAD DIST. NO.	ELLIPSIS	FED. AID PROJECT		
* X1-2,44(2,3,4)RS,BSMARTFY04-4				
** WILLIAMSON/JOHNSON CONTRACT NO. 98758				



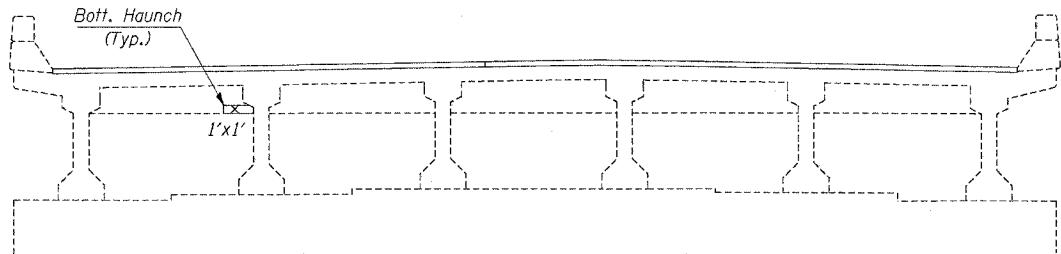
**NORTH ABUTMENT BACKWALL SN 044-0038**  
(Looking North)




**NORTH ABUTMENT BACKWALL SN 044-0037**  
(Looking North)



**SOUTH ABUTMENT BACKWALL SN 044-0038**  
(Looking South)



**SOUTH ABUTMENT BACKWALL SN 044-0037**  
(Looking South)

 Polymer Modified Portland Cement Mortar

**BILL OF MATERIAL**

Item	Unit	Total	0037	0038
Polymer Modified Portland Cement Mortar	Sq. Ft.	110	25	85

DESIGNED	TWH MAS
CHECKED	MAS
DRAWN	TEB TWH
CHECKED	MAS

**CONCRETE REPAIR DETAILS**  
**JOHNSON COUNTY**  
**SN 044-0037 (EB)**  
**SN 044-0038 (WB)**