

STATE OF ILLINOIS
DEPARTMENT OF TRANSPORTATION

ROUTE NO.	SECTION	COUNTY	TOTAL SHEETS	SHEET NO.
		JOHNSON	148D	2
FED. ROAD DIST. NO. 7		ILLINOIS FED. AID PROJECT-		

SHEET NO. 2
2 SHEETS

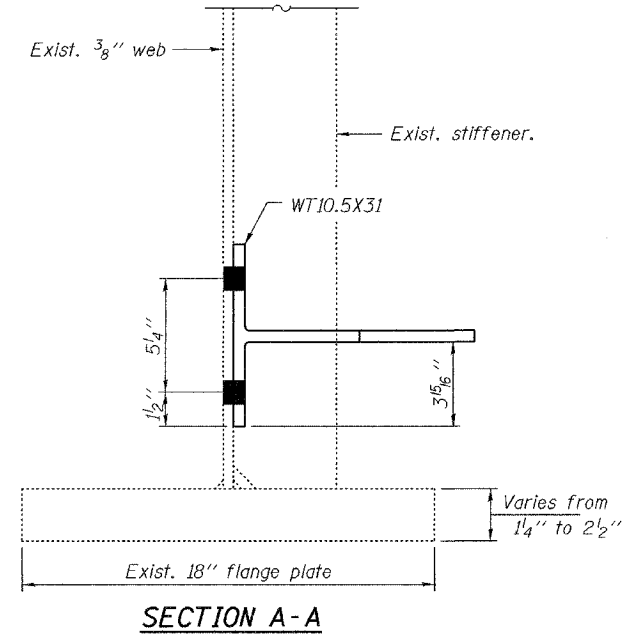
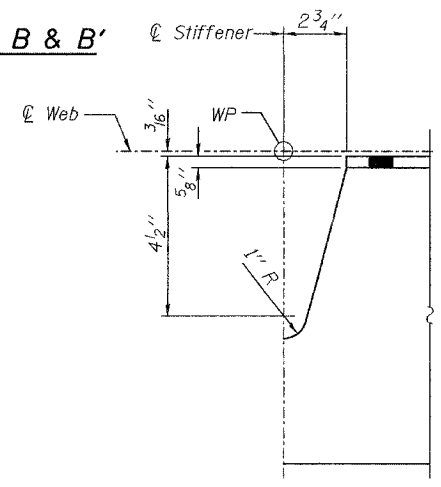
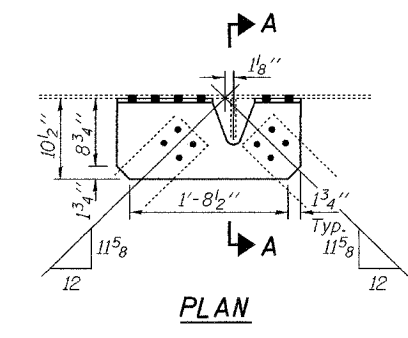
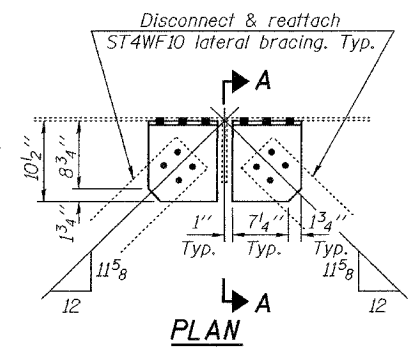
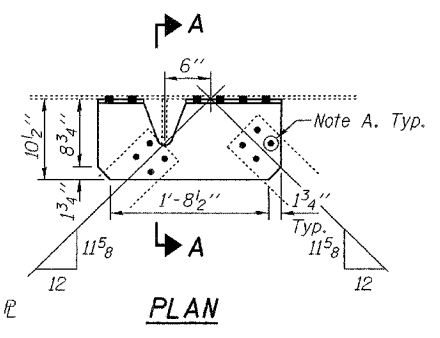
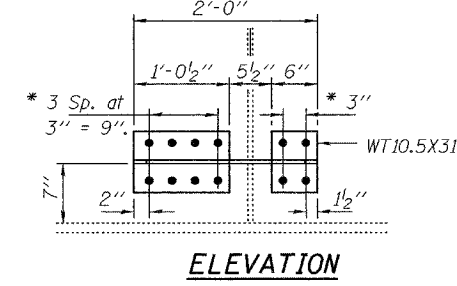
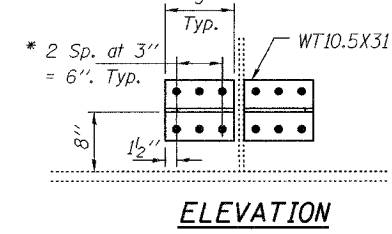
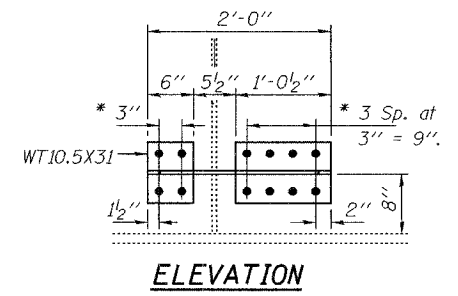
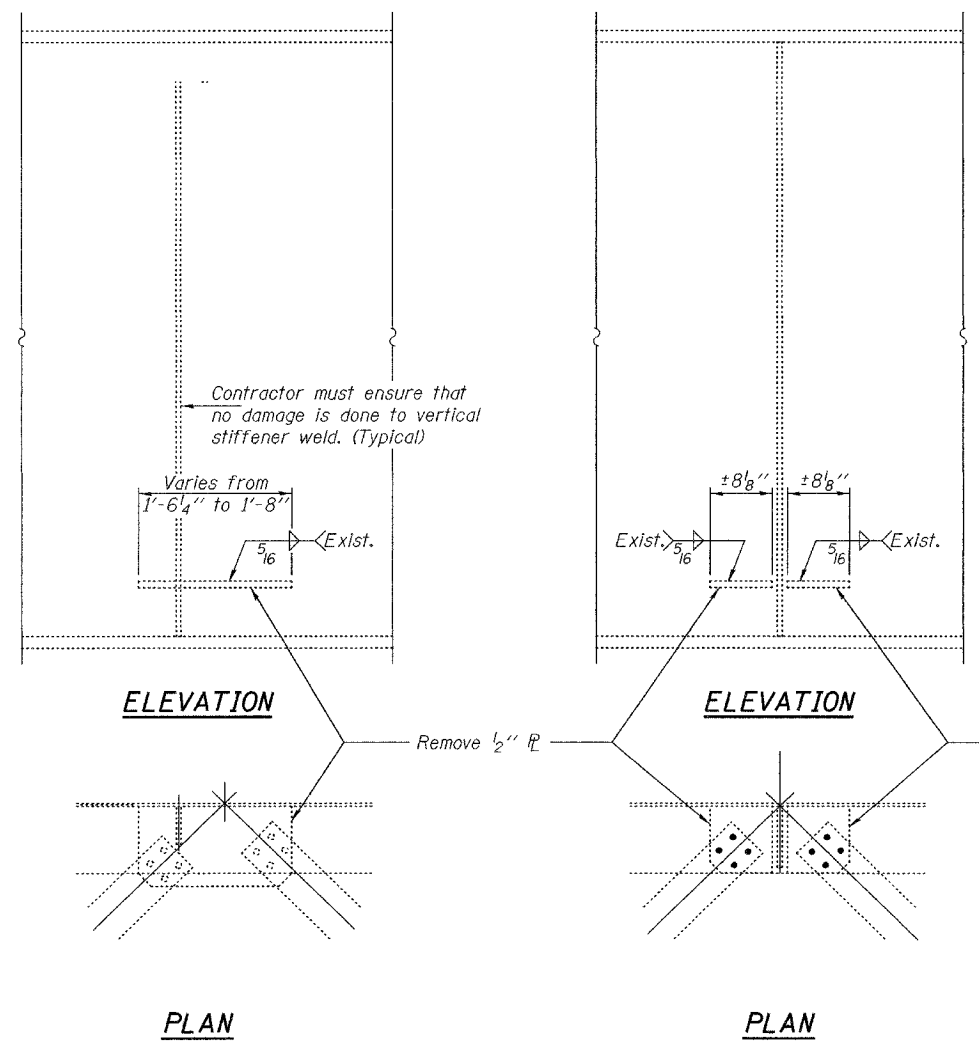
CONTRACT NO. 98758

* Use holes in WT section as a template for drilling holes in web.

Note A:
Use holes in exist. ST4WF10 as a template for drilling holes in WT section.

Procedure for Repair Detail

1. Remove existing horizontal gusset plates as shown. The minimum distance from cut to face of web shall be the larger of 1/4" or web to gusset flange weld size, with removal of remaining material by grinding as described below. The cut shall be made vertically through the gusset without angling the cut towards the web. Equipment and method of cutting shall be approved by the Engineer. Any method of removal to be used shall ensure that no damage is done to the existing web, vertical stiffener or welds connecting these elements. Cutting shall be done in a manner such that the paint on the opposite face of the web is not damaged. If damage occurs, the damaged area shall be repainted at the contractor's expense and procedures shall be modified to prevent damage at subsequent removal locations.
2. Remove material between cut and web by grinding and grind smooth at web surface. Web plate surfaces shall have a roughness average (Ra) of 250µ in. or less. Grinding equipment shall be approved by the Engineer. The grinding operation should not gouge the girder web flange.
3. The web surface at the modification shall be inspected using dye penetrant or magnetic particle methods. Any cracks found shall be identified and reported to the Bureau of Bridges and Structures for further disposition.
4. Existing structural steel that will be in contact with new structural steel shall be cleaned and painted prior to erection as required by the Special Provision "Cleaning and Painting Contact Surface Areas of Existing Steel Structures".



Notes:
All structural steel shall conform to AASHTO Classification M-270 Gr. 36, unless otherwise noted.
Fasteners shall be high strength bolts. Bolts 3/4"φ, open holes 13/16"φ, unless otherwise noted.

DESIGNED	JSB
CHECKED	ATH
DRAWN	Drew Christopher
CHECKED	JSB ATH

JANUARY 14, 2005

EXAMINED *John A. Morris*
ENGINEER OF STRUCTURAL SERVICES

PASSED *Ralph E. Anderson*
ENGINEER OF BRIDGES AND STRUCTURES

STEEL REMOVAL
F.A.I. RT. 24
JOHNSON COUNTY
SN 044-0033