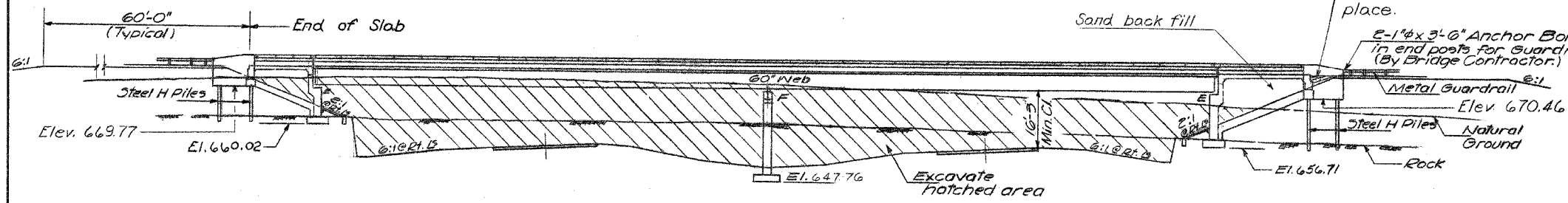
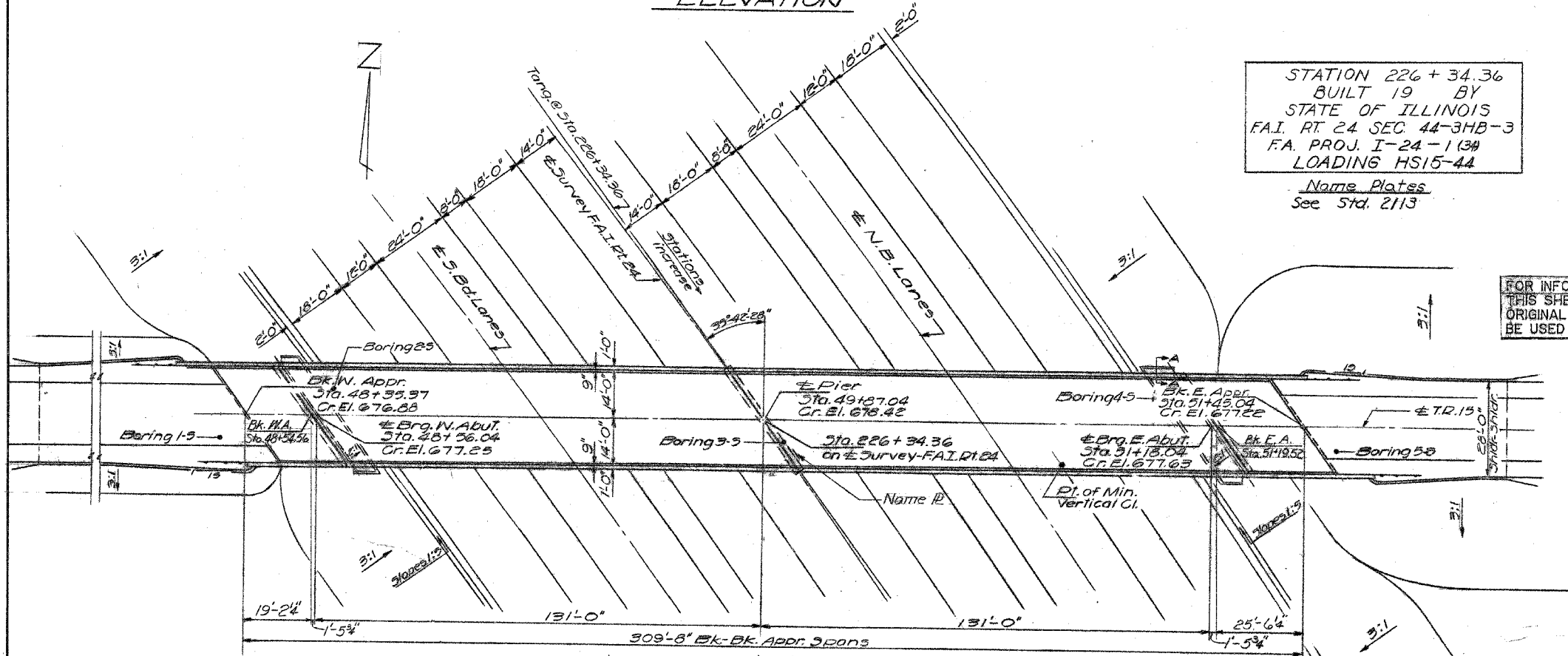


B.M. R.R. Spike in P.P. 77' Rt Sta. 225+66
 E. Median F.A.I. Rt. 24 El. 677.93

F.A.I. SEC.	SECTION	COUNTY	TOTAL SHEETS	SHEET NO.
24	*	**	189	151
STA.	TO STA.	BLDG. NO.	FED. AID PROJECT	

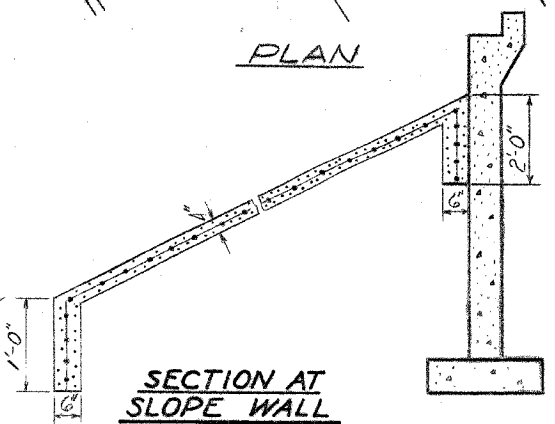


ELEVATION

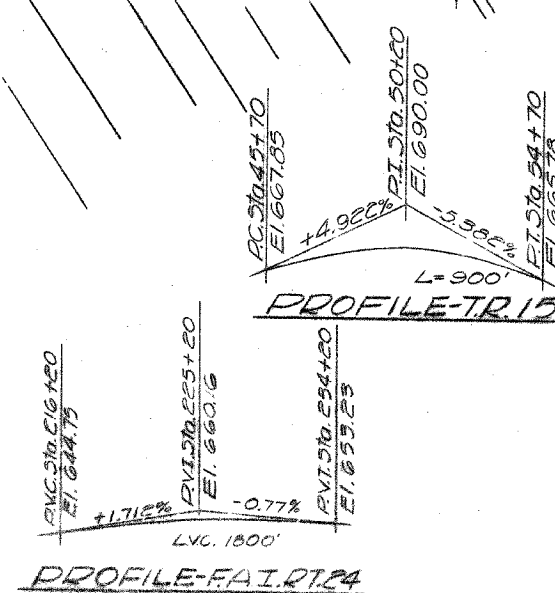


PLAN

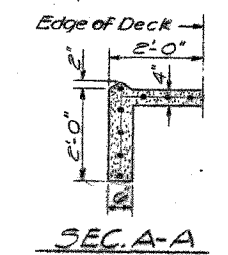
F.A.I. RT. 24 CURVE DATA
 $\Delta = 18^\circ 12' 02''$
 $D = 00^\circ 30' 00''$
 $R = 11,459.196'$
 $T = 1835.52'$
 $L = 3640.111'$
 $E = 146.07'$
 P.I. Sta. 213+28.29
 S.F. 0.13%
 Sta. 193+59.44 to Sta. 195+59.44
 Sta. 230+66.21 to Sta. 232+66.21



SECTION AT SLOPE WALL



PROFILE-TR.15



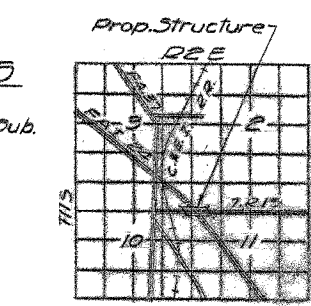
SEC. A-A

DESIGN STRESSES

$f_c = 1200$ psi. Deck Slab
 $f_c = 1400$ psi. Curb, Parapet, Sub.
 $f_s = 20,000$ psi. Reinf.
 $f_s = 20,000$ psi. Struct.
 $v_c = 75$ psi. Flgs.
 $n = 10$
 Allowable Fut. W.S. 25#0
 Allowable $\epsilon_d \leq 1/200$ Comp.

TOTAL BILL OF MATERIAL

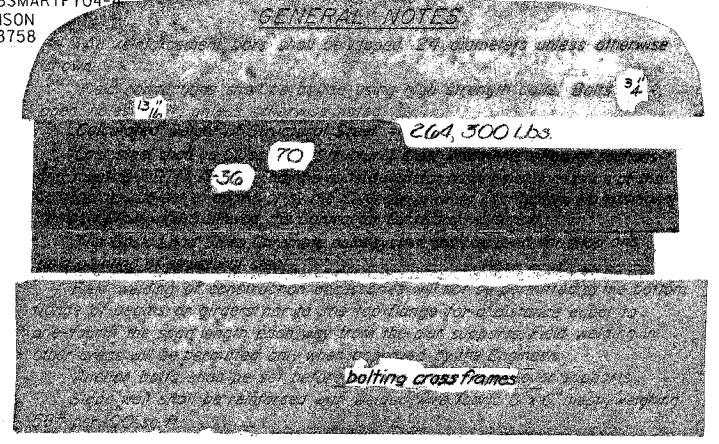
Item	Unit	Super	Sub.	Total
Rock Excavation for Structures	Cu. Yds.		150	150
Structure Excavation	Cu. Yds.		160	160
Cl. X. Concrete	Cu. Yds.	299.3	259.3	558.6
Protective Coat	Sq. Yds.	1150		1150
Structural Steel	L.S.	L.S.		L.S.
Stud Shear Connectors	Each	1,280		1,280
Reinforcement Bars	lbs.	77,170	29,920	107,090
Steel Piles (8BP36)	Lin. Ft.		150	150
Test Piles Steel (8BP36)	Each		1	1
Name Plates	Each		1	1
Slope Wall (4")	Sq. Yds.		95	95
Aluminum Railing	Lin. Ft.		607	607
Neoprene Expansion Jt. (2")	Lin. Ft.	71		71
Sand Back Fill	Cu. Yds.		250	250



SN 044-0033
 PROJ. I-24-1(3)2
 TR.15 OVER F.A.I. RT. 24
 F.A.I. ROUTE 24
 SECTION 44-3HB-3
 JOHNSON COUNTY
 STATION 226+34.36

STATION 226 + 34.36
 BUILT 19 BY
 STATE OF ILLINOIS
 F.A.I. RT. 24 SEC. 44-3HB-3
 F.A. PROJ. I-24-1(3)2
 LOADING HS15-44
 Name Plates
 See Std. 2113

FOR INFORMATION ONLY!
 THIS SHEET IS FROM THE
 ORIGINAL PLANS AND IS TO
 BE USED FOR REFERENCE ONLY.



The Contractor shall drive one Steel Test Pile in a permanent location at East Appr. Bent as directed by the Engineer before ordering the remainder of piles.

DESIGNED: Hoppel, Singh
 CHECKED: A. Keramati
 G. E. Wilkins
 DRAWN:
 CHECKED: A. K.

EXAMINED: [Signature] 1969
 PASSED: [Signature]
 APPROVED: [Signature] CHIEF HIGHWAY ENGINEER