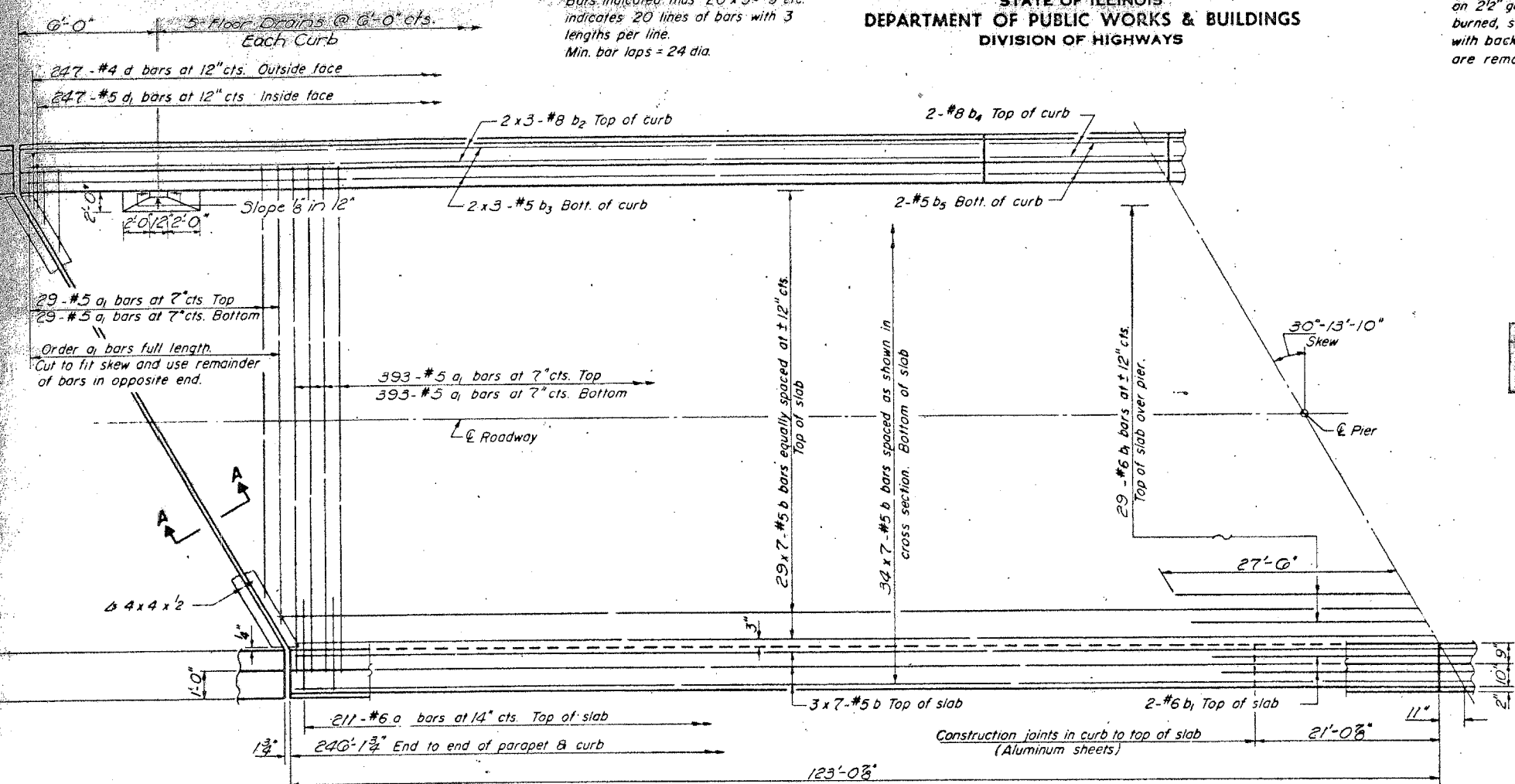


STATE OF ILLINOIS  
DEPARTMENT OF PUBLIC WORKS & BUILDINGS  
DIVISION OF HIGHWAYS

SHEET NO. 5	TOTAL SHEETS 12
-------------	-----------------

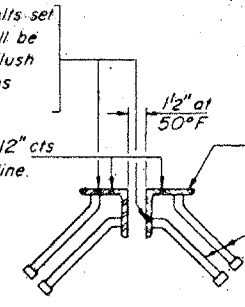
NOTE:  
Bars indicated thus 20 x 3-#5 etc.  
indicates 20 lines of bars with 3  
lengths per line.  
Min. bar laps = 24 dia.

1/2" holes at 12" cts. for 3/8" bolts set  
on 2 1/2" gage line. All bolts shall be  
burned, sawed or clipped off flush  
with back of angles after forms  
are removed.

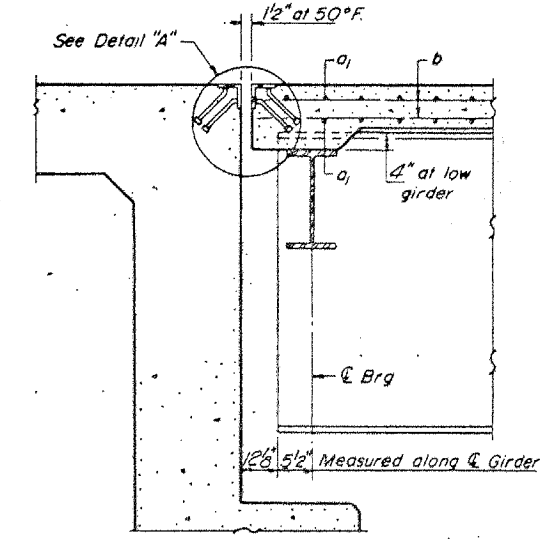


HALF PLAN

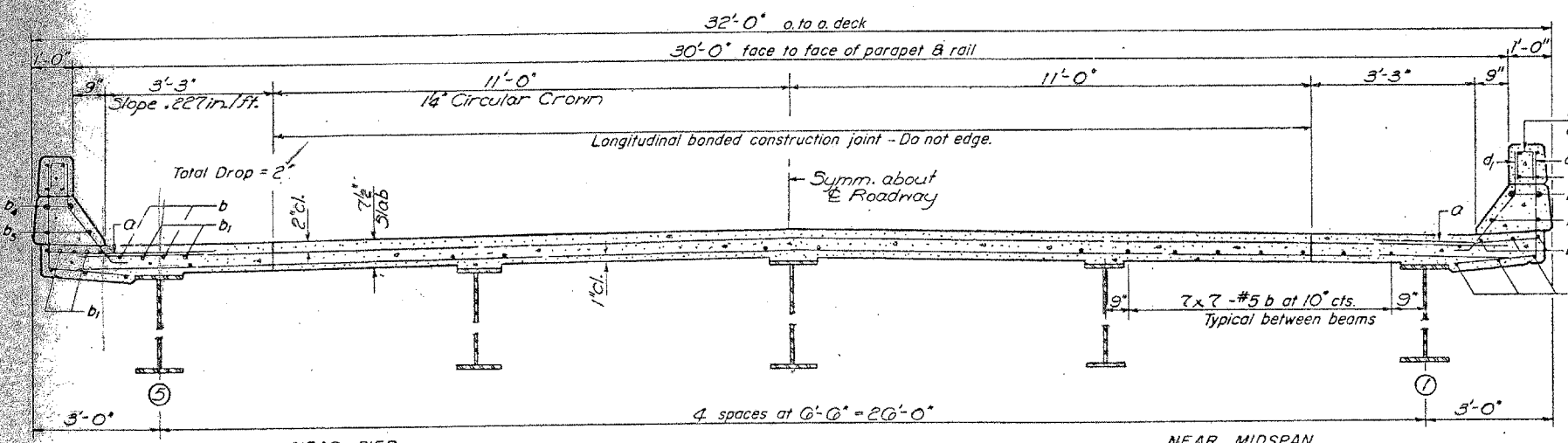
FOR INFORMATION ONLY:  
THIS SHEET IS FROM THE  
ORIGINAL PLANS AND IS TO  
BE USED FOR REFERENCE ONLY.



DETAIL "A"



SECTION A-A



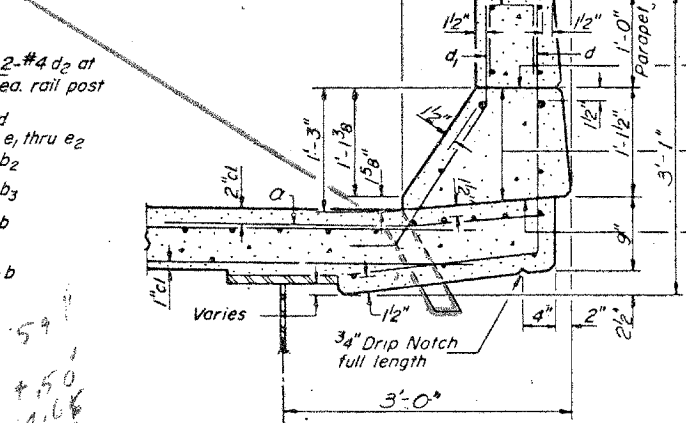
NEAR PIER

CROSS SECTION

NEAR MIDSPAN

NOTE: For placement of bars d<sub>2</sub> and  
e<sub>1</sub> thru e<sub>2</sub> see sheet # 8

FLOOR DRAIN



CURB SECTION

Cost of Aluminum Sheets shall be  
incidental to Class X Concrete

BILL OF MATERIAL

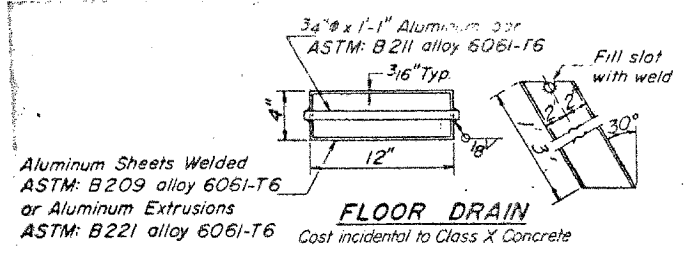
Bar	No.	Size	Length	Shape
a	422	#6	4'-0"	
a <sub>1</sub>	844	#5	30'-0"	
b	483	#5	30'-2"	
b <sub>1</sub>	33	#6	55'-0"	
b <sub>2</sub>	24	#8	35'-3"	
b <sub>3</sub>	24	#5	30'-9"	
b <sub>4</sub>	8	#8	20'-10"	
b <sub>5</sub>	8	#5	20'-10"	
d	494	#4	4'-8"	J
d <sub>1</sub>	494	#5	3'-3"	J
Reinforcement Bars		Lbs	56,850	
Class X Concrete		Cu Yds	218.2	
Structural Steel		Lbs	272210	

\*Weight of bearing assemblies with lead  
plates and anchor bolts are included  
as Structural Steel Est Wt = 5050 lbs..

Parapet Reinforcement and Class X  
Concrete are billed on sheet # 8

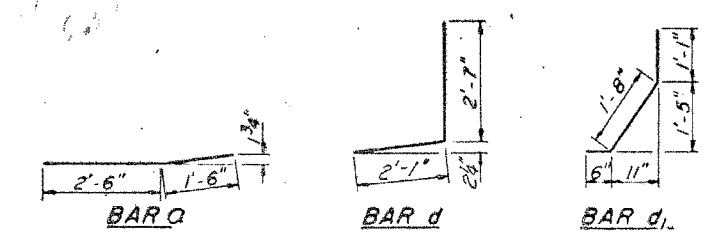
DESIGNED R. M. Mattern
CHECKED Suresh T. Desai
DRAWN Jacobs
CHECKED S.D.

EXAMINED Dec 5 1969
PASSED H. G. Baumann
APPROVED Richard H. Gatterman



FLOOR DRAIN

Cost incidental to Class X Concrete



BAR a

BAR d

BAR d<sub>1</sub>

SN 044-0035  
SUPERSTRUCTURE  
MAIN SPANS  
E.A.I. RT. 24 SEC. 44-3HB-1  
JOHNSON COUNTY  
STA. 431 + 72.72