

10-14

B.M.: Spike in 24" Oak Elev. 702.95 - 165' Rt
Sta. 508+40.

STATE OF ILLINOIS
DEPARTMENT OF PUBLIC WORKS & BUILDINGS
DIVISION OF HIGHWAYS

F.A.I. No.	SECTION	COUNTY	TOTAL SHEETS	SHEET NO.
24	*	**	189	156
STA.	TO STA.			
FED. ROAD DIST. NO.	ILLINOIS	FED. AID PROJECT		

ROUTE	SECTION	COUNTY	TOTAL SHEETS	SHEET NO.
U.S. 1	44-3102	Johnson	60	12
F.A.I. No.	PROJECT NO.			
24	E-24-1667			

* X1-2,44(2,3,4)RS BSMRTFY04-4
** WILLIAMSON/JOHNSON
CONTRACT NO. 98758

GENERAL NOTES

All reinforcement bars shall be lapped 24 diameters unless otherwise shown.

Field connections shall be bolted using high strength bolts. Bolts shall be open holes 15/16", unless otherwise noted.

The basic lead silico chromate paint system shall be used for shop and field painting of Structural Steel.

Calculated weight of Structural Steel = 215,200 lbs.

Field welding of construction accessories will not be permitted to the bottom flange of beams or girders nor to the top flange for a distance equal to one-fourth the span length each way from the pier supports. Field welding in other areas will be permitted only when approved by the Engineer.

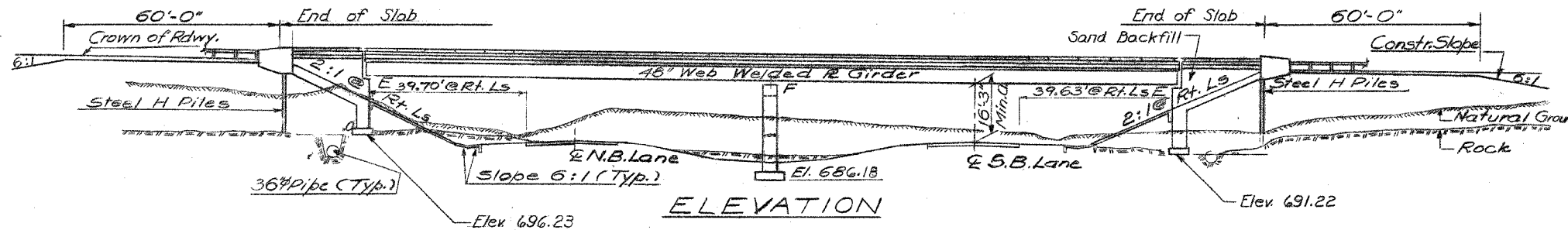
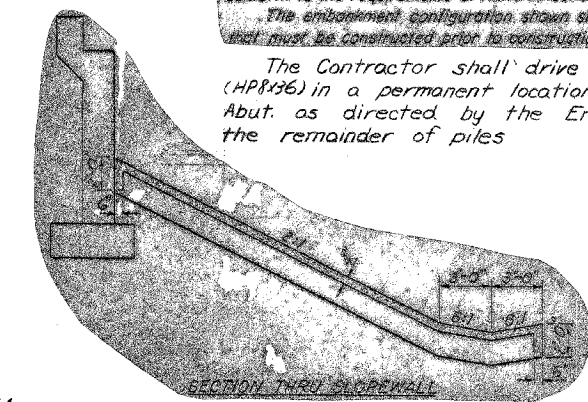
Anchor bolts shall be set before riveting diaphragms over supports.

Slope wall shall be reinforced with welded wire fabric 6" x 6" mesh, weighing 55# per 100 sq. ft.

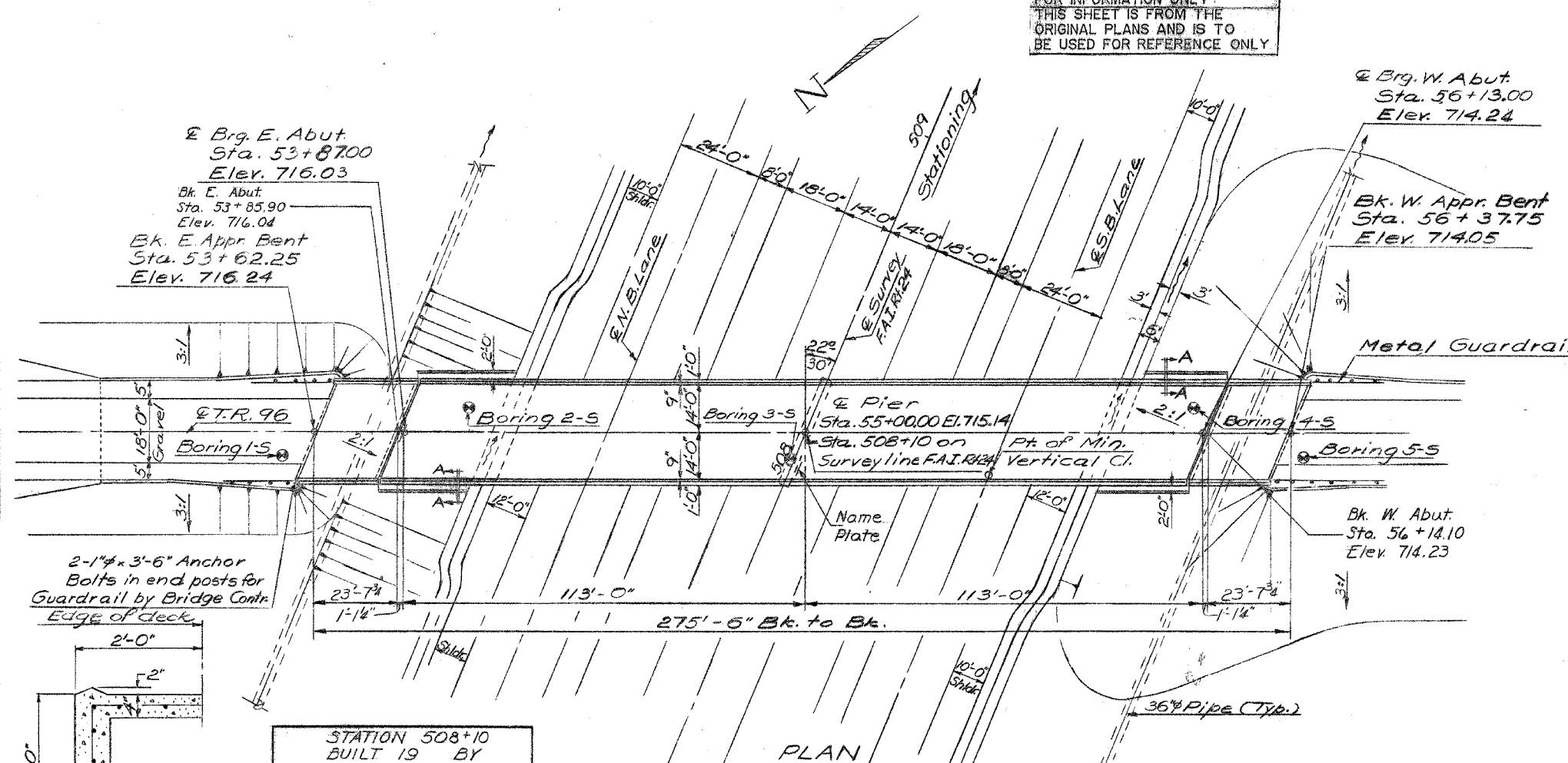
The concrete rail section above the mandatory construction joint at the top of the slab shall be constructed of Class X Concrete, except the aggregates shall conform to the requirements of Handrail Concrete.

The embankment configuration shown shall be the minimum embankment and must be constructed prior to construction of the abutments.

The Contractor shall drive One Steel Test Pile (HP8x36) in a permanent location at the West Appr. Abut. as directed by the Engineer before ordering the remainder of piles.



FOR INFORMATION ONLY
THIS SHEET IS FROM THE ORIGINAL PLANS AND IS TO BE USED FOR REFERENCE ONLY



TOTAL BILL OF MATERIAL

Item	Unit	Super	Sub	Total
STRUCTURE EXCAVATION	Cu. Yds.		111	111
Protective Coat	Sq. Yds.	952		952
Class X Concrete	Cu. Yds.	280.2	195.1	475.3
* Rock Excavation for Structure	Cu. Yds.		19	19
Structural Steel	L.S.	L.S.	L.S.	L.S.
Stud Shear Connectors	Each	1224		1224
Aluminum Railing	Lin. Ft.	540		540
Reinforcement Bars	Lbs.	63,950	25,740	89,690
Steel Piles (HP8x36)	Lin. Ft.		171	171
Test Piles Steel (HP8x36)	Each		1	1
Name Plates	Each		1	1
Slope Wall (4')	Sq. Yds.			294
Preformed Joint Sealer	Lin. Ft.	65		65
Sand Backfill	Cu. Yds.			200

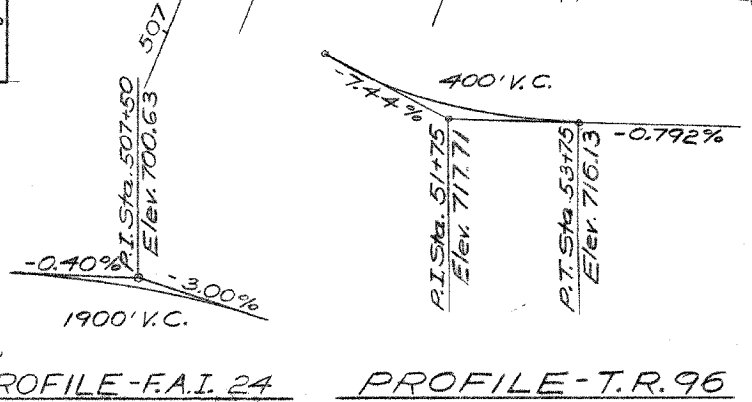
* Includes Excavation For StopeWall

SECTION A-A

STATION 508+10
BUILT 19 BY
STATE OF ILLINOIS
F.A.I. RT. 24 SEC. 44-3HB-2
F.A. PROJ. I-24-11
LOADING HS15
NAME PLATES
Std. 2113-1

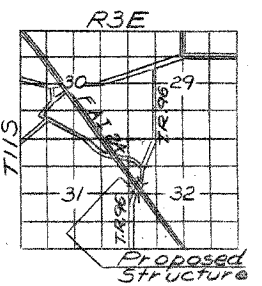
Note: Allow 25#/' for fut. Wearing Surf.

DESIGNED	Emile A. Samara	EXAMINED	July 15 1969
CHECKED	A. Keramati	PASSED	Richard H. Hollerstein
DRAWN	C.E. Watkins	APPROVED	Richard H. Hollerstein
CHECKED	A.K.		



DESIGN STRESSES

$f_c = 1200$ psi - Deck Slab
 $f_c = 1400$ psi - Curb, Parapet, Sub.
 $f_s = 20,000$ psi - Reinf.
 $f_s = 20,000$ psi - Struct.
 $v_c = 75$ psi - Ftgs
 $n = 10$



GENERAL PLAN & ELEVATION
PROJECT I-24-1(47)
T.R. 96 OVER F.A.I. RT. 24
F.A.I. RT. 24 SEC. 44-3HB-2
JOHNSON COUNTY
STA. 508+10