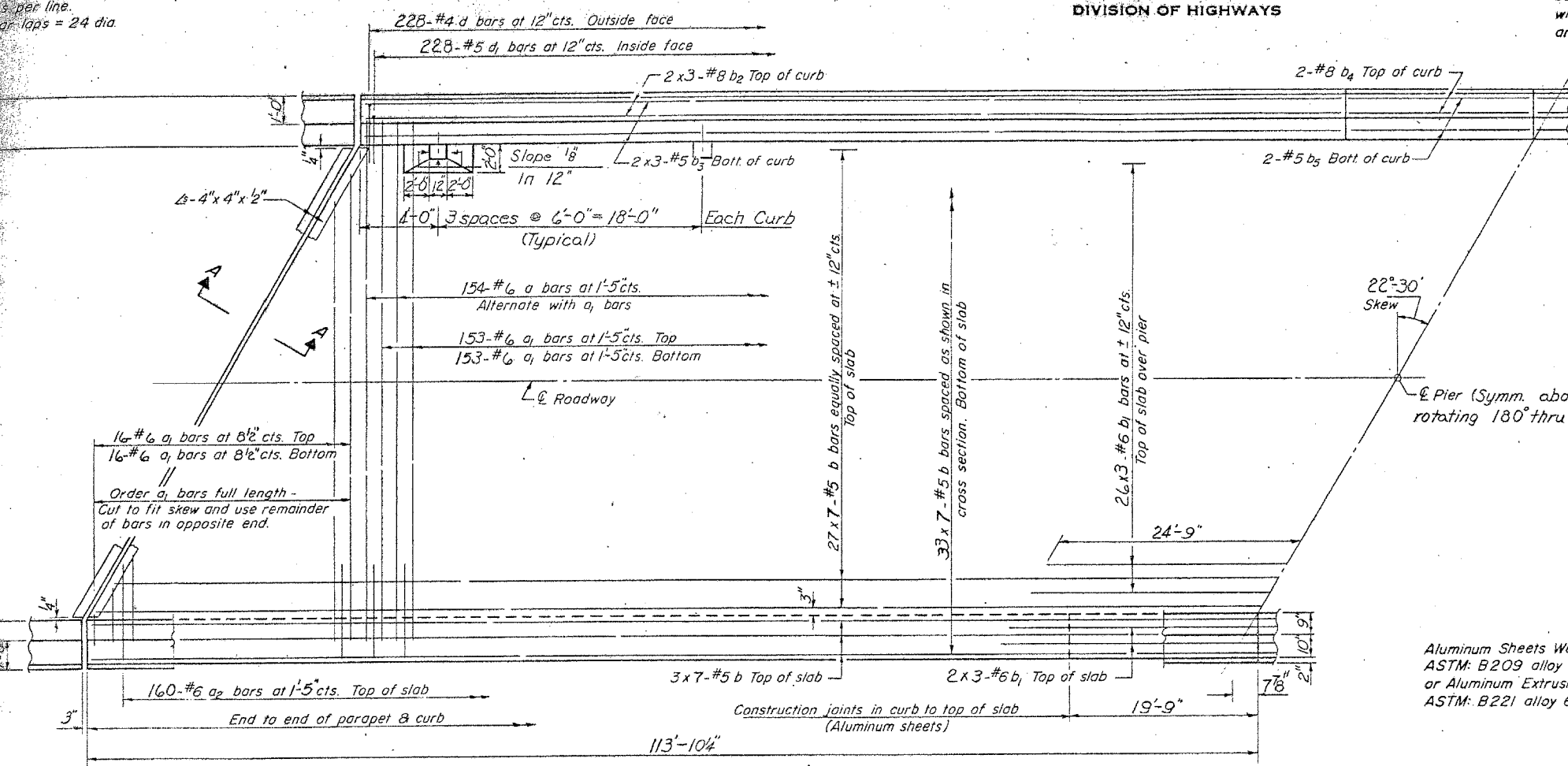


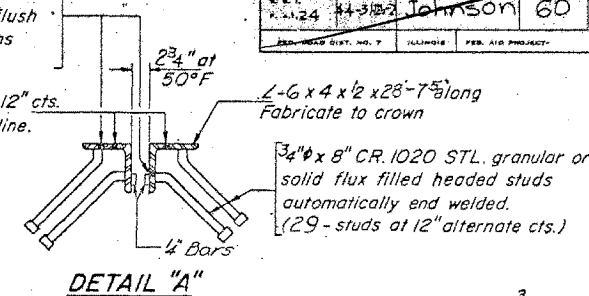
STATE OF ILLINOIS  
DEPARTMENT OF PUBLIC WORKS & BUILDINGS  
DIVISION OF HIGHWAYS

SHEET NO. 5  
11 SHEETS

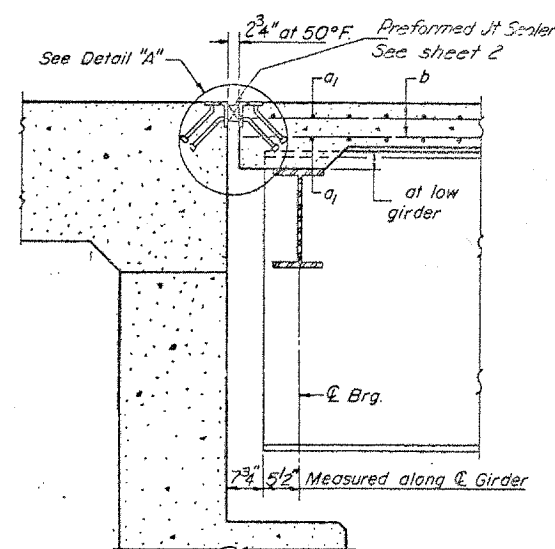
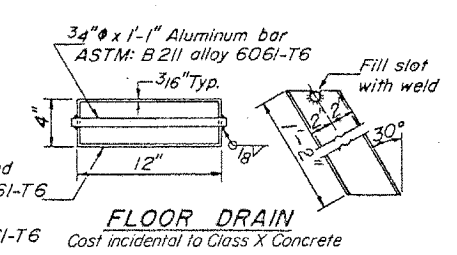
Bars indicated thus 20 x 3-#5 etc.  
indicates 20 lines of bars with 3-#5  
bars per line.  
Bar laps = 24 dia.



7/16" holes at 12" cts. for 3/8" bolts set on 2 1/2" gage line. All bolts shall be burned, sawed or clipped off flush with back of angles after forms are removed.

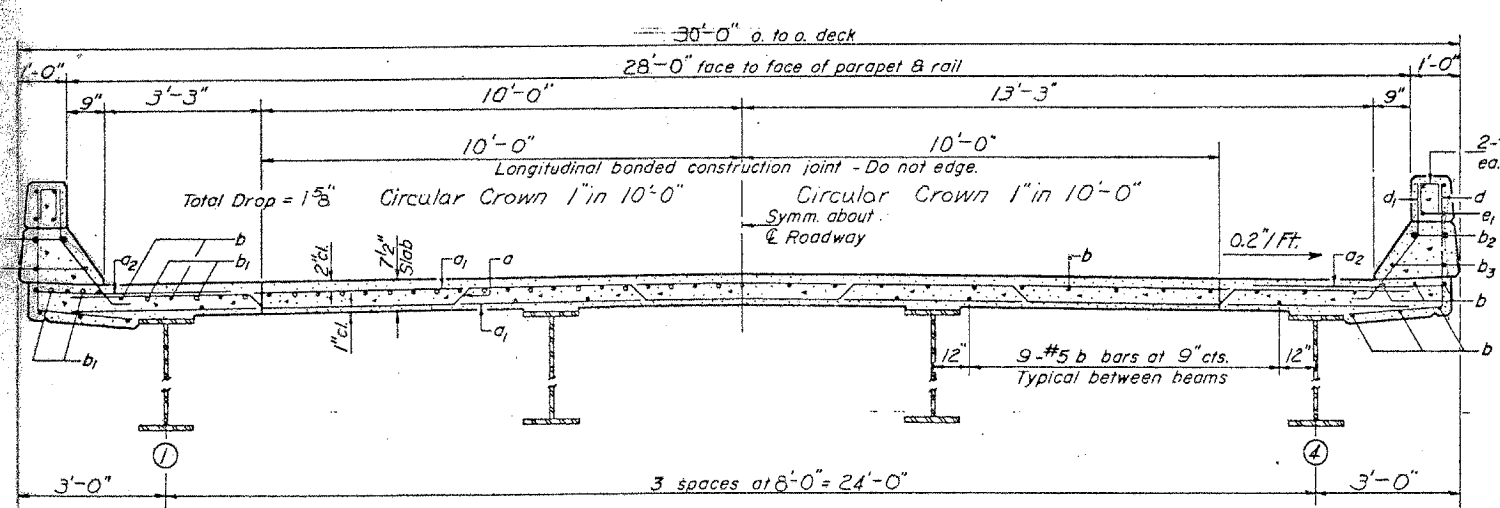


FOR INFORMATION ONLY  
THIS SHEET IS FROM THE ORIGINAL PLANS AND IS TO BE USED FOR REFERENCE ONLY.



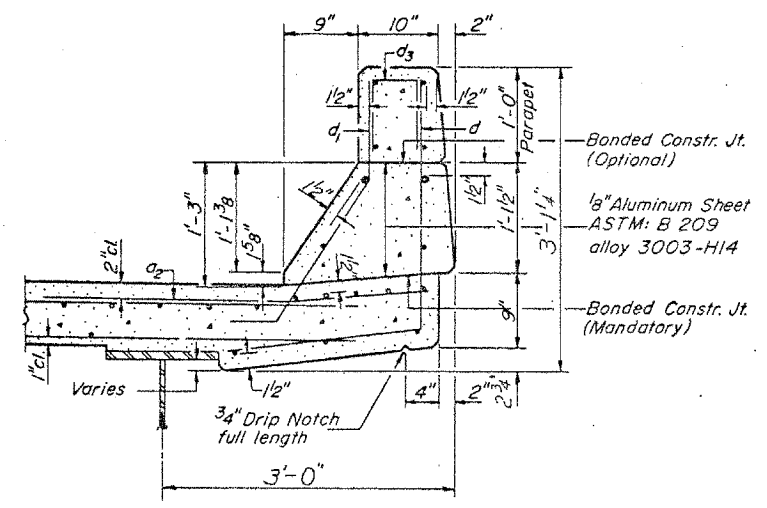
SECTION A-A

HALF PLAN



CROSS SECTION  
(Looking West)

NOTE: For placement of bars d<sub>3</sub> and e<sub>1</sub> thru e<sub>3</sub> see sheet #8



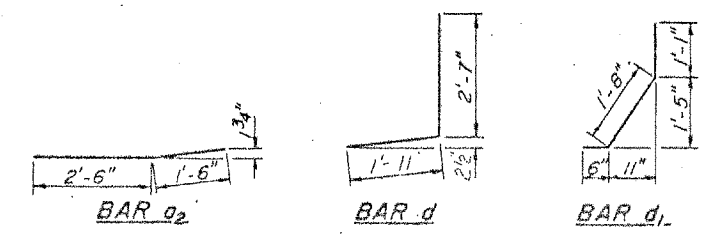
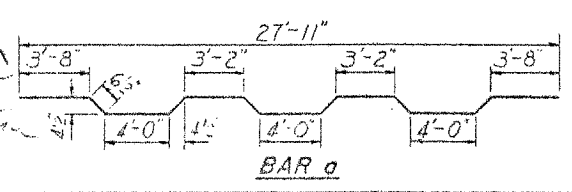
CURB SECTION  
Cost of Aluminum Sheets shall be incidental to Class X Concrete.

BILL OF MATERIAL

Bar	No.	Size	Length	Shape
a	154	#6	23'-11"	~
a <sub>1</sub>	338	#6	28'-3"	~
a <sub>2</sub>	320	#6	4'-0"	~
b	462	#5	33'-9"	~
b <sub>1</sub>	90	#6	17'-6"	~
b <sub>2</sub>	24	#8	32'-9"	~
b <sub>3</sub>	24	#5	32'-3"	~
b <sub>4</sub>	8	#8	19'-6"	~
b <sub>5</sub>	8	#5	19'-6"	~
d	456	#4	4'-6"	┘
d <sub>1</sub>	456	#5	3'-3"	┘
Reinforcement Bars		Lbs.	47,330	
Class X Concrete		Cu. Yds.	193.1	
* Structural Steel		Lbs.	215,230	

\* Weight of bearing assemblies with lead plates and anchor bolts are included as Structural Steel. Est. Wt. = 33,015 lbs.  
Parapet Reinforcement and Class X Concrete are billed on sheet # 8

DESIGNED Emil A. Samara  
CHECKED A. Kromat  
DRAWN C. E. Wilkins  
CHECKED A. K.  
EXAMINED July 15 1963  
PASSED  
APPROVED



SN 044-0036  
SUPERSTRUCTURE  
GIRDER SPAN  
FAI RT 24 SEC 44-3HB-2  
JOHNSON COUNTY  
STA. 508+10