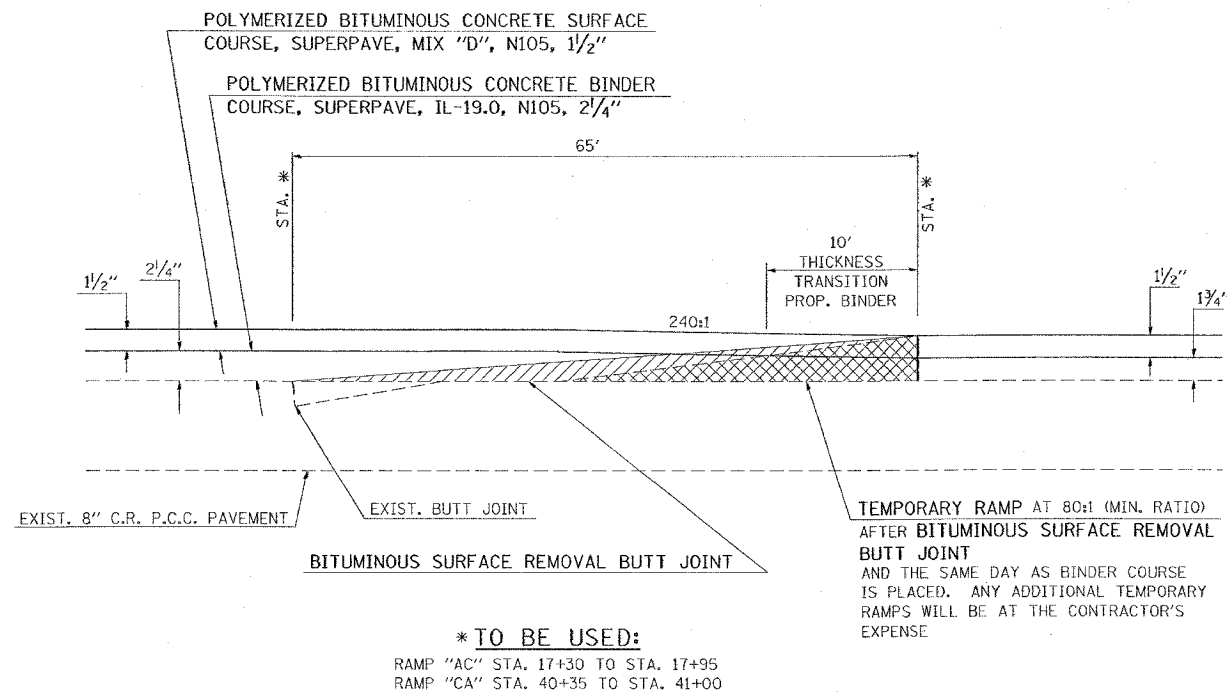


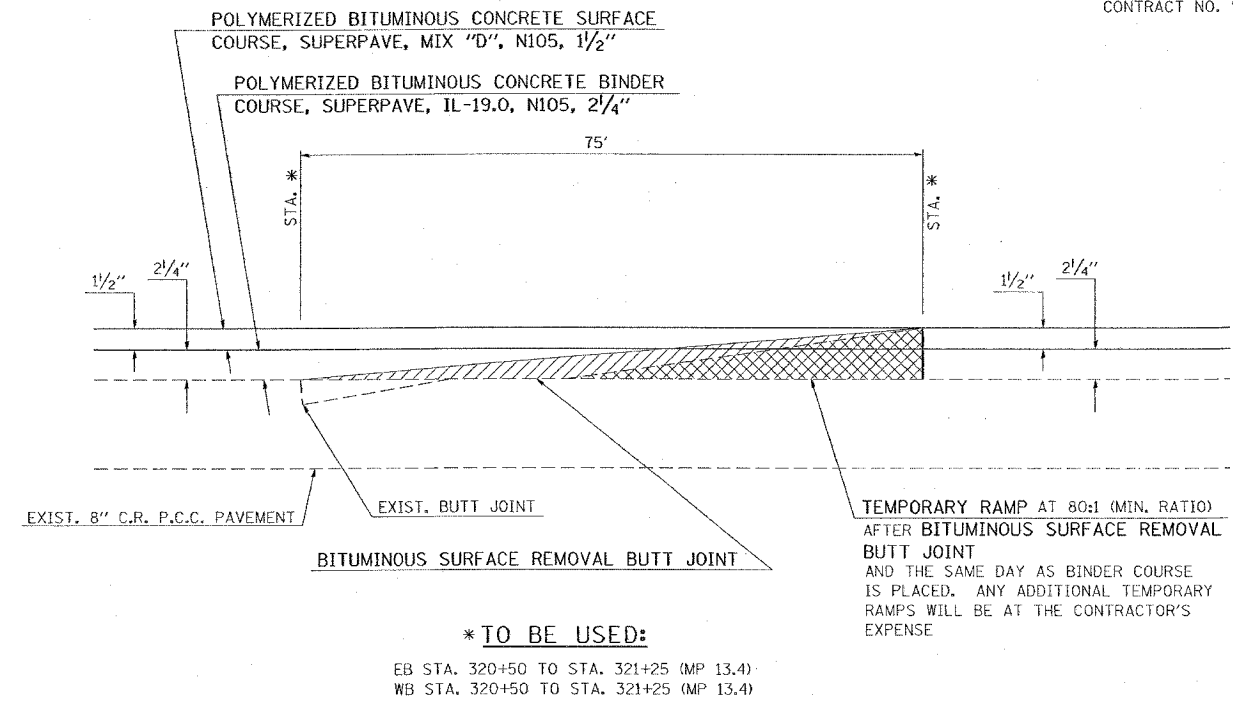
F.A.S. BTE.	SECTION	COUNTY	TOTAL SHEETS	SHEET NO.
24	*	**	189	158

STA. TO STA.
 FED. ROAD DIST. NO. ILLINOIS FED. AID PROJECT
 * X1-2.44(2,3,4)RS.BSMARFY04-4
 ** WILLIAMSON/JOHNSON CONTRACT NO. 98758

BITUMINOUS THICKNESS TRANSITIONS

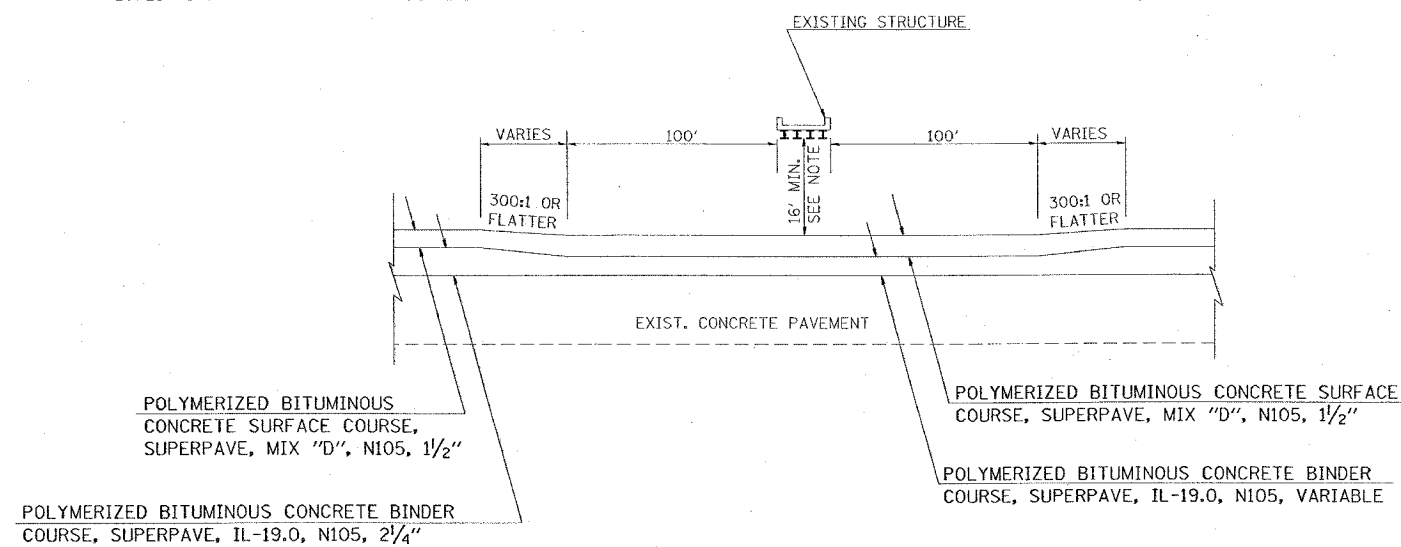


BITUMINOUS THICKNESS TRANSITIONS



BITUMINOUS TRANSITIONS UNDER STRUCTURES

NOTE:
 THE 16' MINIMUM APPLIES TO ALL OVERHEAD BRIDGES, 17' MINIMUM TO ALL SIGN TRUSSES, AND IS TO THE POINT OF LOWEST STEEL. THE ENGINEER SHALL VERIFY ALL LOCATIONS.



BUTT-JOINT

NOTE: AT THE SAWED BUTT JOINT LOCATIONS INDICATED, SIMILAR BUTT JOINTS SHALL BE CONSTRUCTED IN THE ADJACENT EXISTING BITUMINOUS SHOULDERS.

