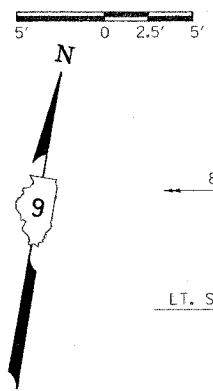


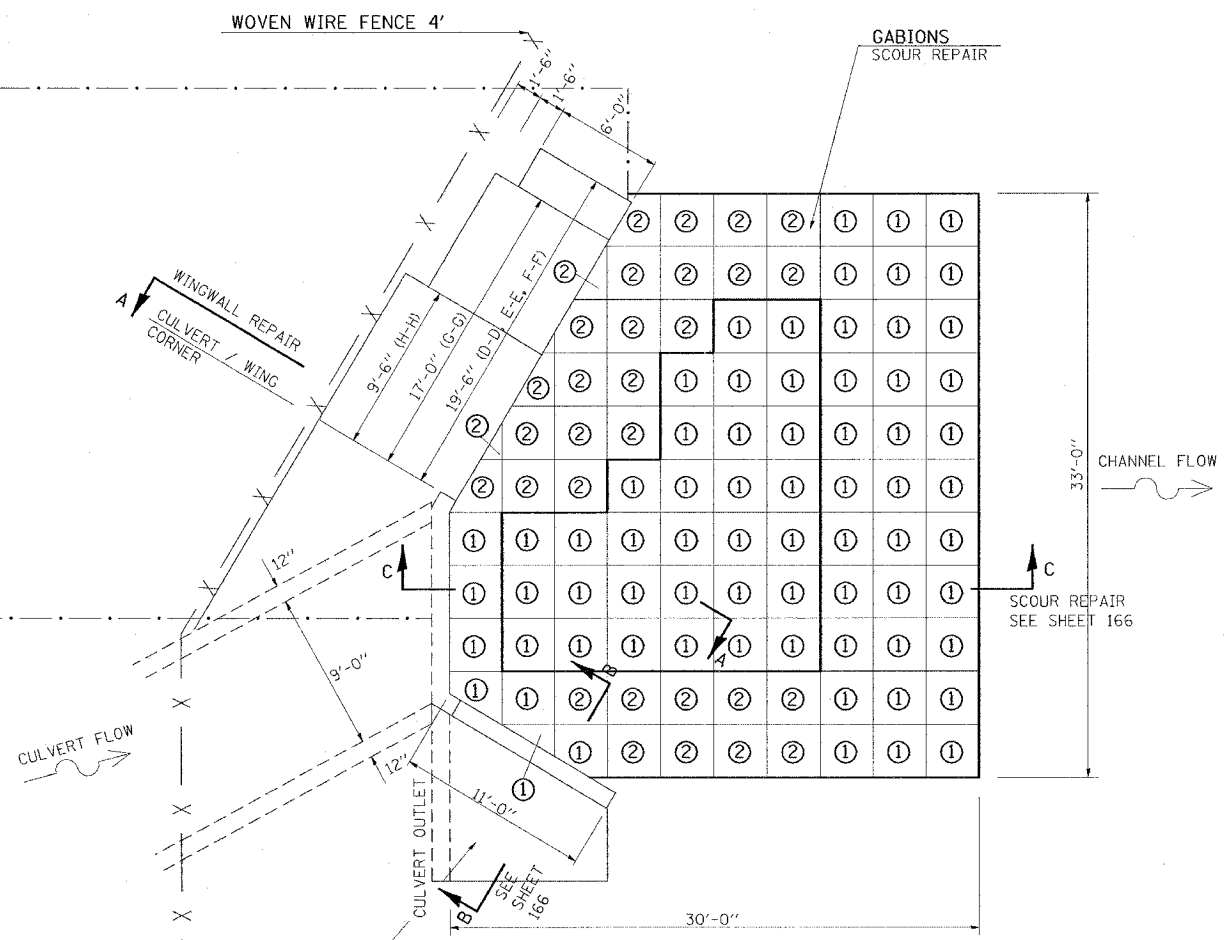
SCOUR AND WINGWALL REPAIR LT. STA. 1391+89 9' x 8' BOX CULVERT (W.B.L.) MP 6.8

F.A.I. DIST. NO.	SECTION	COUNTY	TOTAL SHEETS	SHEET NO.
24	*	**	189	165
STA. TO STA.				
FED. ROAD DIST. NO. ILLINOIS FED. AID PROJECT				
* X1-2,44(2,3,4)RS,BSMARTFY04-4				
** WILLIAMSON/JOHNSON				
CONTRACT NO. 98758				



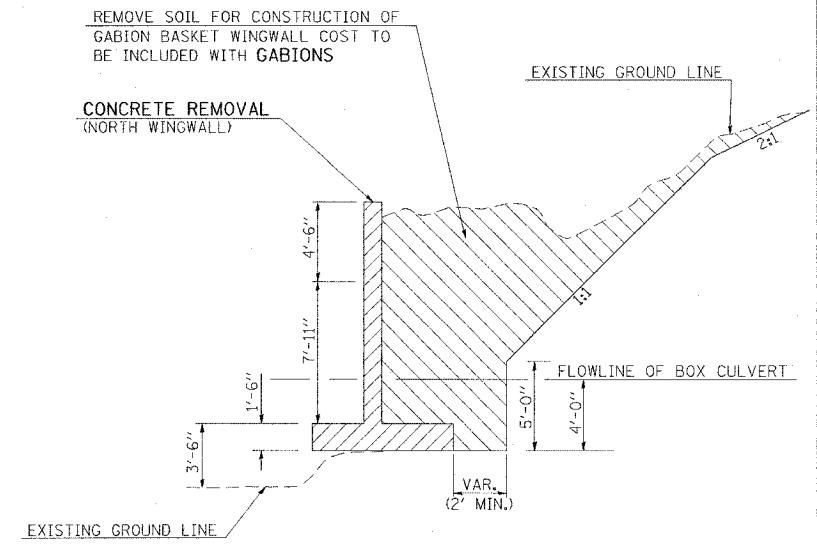
GRADING AND SHAPING FORESLOPES
 60' x 30'
 COST TO INCLUDE MATERIAL BEHIND GABION BASKETS
 LT. STA. 1391+69 (WBL)

80' TO ϵ WBL
 LT. STA. 1391+48

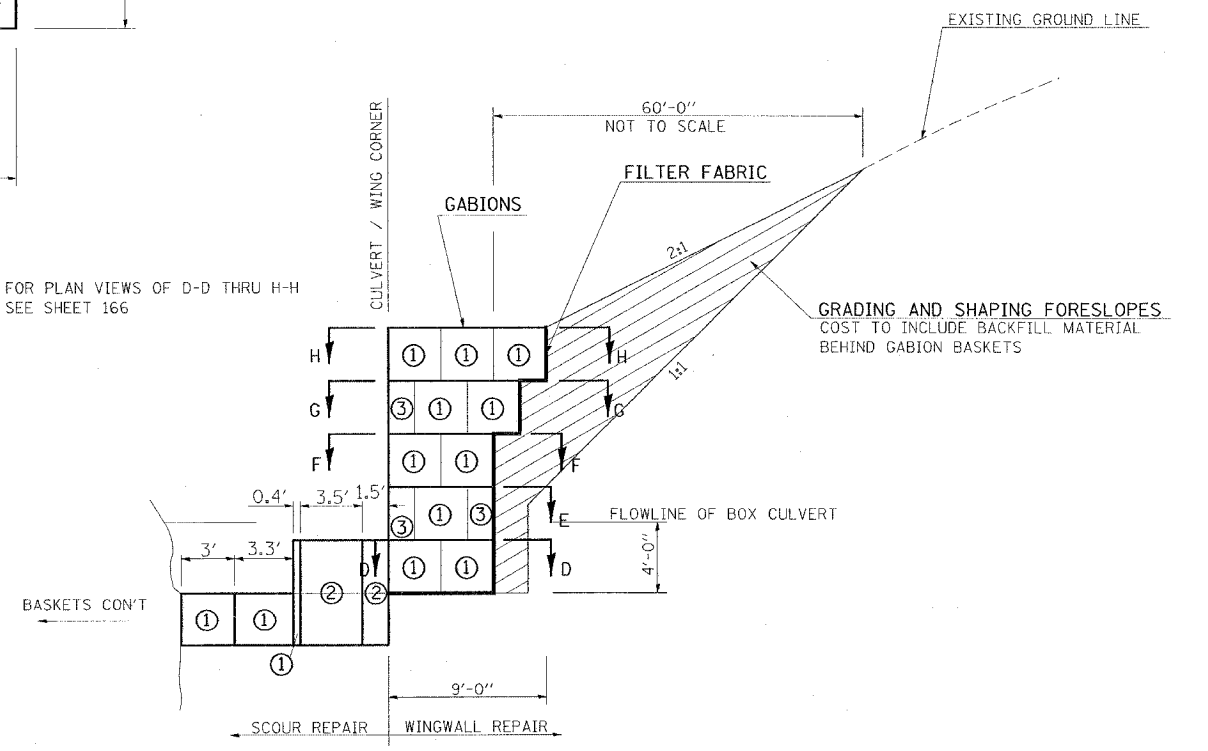


CONCRETE REMOVAL
 OF THE EXISTING SLURRY RIPRAP TO 2'-0" DEEP, COST TO INCLUDE EMBANKMENT TO BRING BACK UP TO GROUND LEVEL
FILTER FABRIC
 LT. STA. 1391+99 (WBL)

PLAN VIEW



SECTION A-A (DEMOLITION VIEW)



SECTION A-A (CONSTRUCTION VIEW)

- NOTES:**
1. THE EXISTING NORTH WINGWALL IS NOT SHOWN FOR CLARIFICATION PURPOSES. SEE SECTION A-A (DEMOLITION VIEW) FOR THE REMOVAL OF THE STRUCTURE. SEE ORIGINAL PLAN SHEET 166A FOR DIMENSION INFORMATION ONLY.
 2. FOR FILLER BENEATH GABION BASKET USE EXISTING RIPRAP BEHIND WINGWALL OR USE THE BROKEN UP WINGWALL.
 3. THE EXISTING WINGWALL SHOWN IN SECTION A-A (DEMOLITION VIEW) CAN BE USED FOR RIPRAP FOR GABION BASKETS IN ACCORDANCE WITH SECTION 284 AND ARTICLE 202.03 OF THE STANDARD SPECIFICATIONS.
 4. THE RIPRAP AND BASKETS SHALL BE PAID FOR PER CU. YD. FOR GABIONS.
 5. THE AVERAGE GABION DIMENSIONS ARE AS INDICATED AND NOTED IN THE RIPRAP SCHEDULE.
 6. BEDDING MATERIAL WILL NOT BE REQUIRED.

7. FILTER FABRIC WILL BE REQUIRED BEHIND THE WINGWALL REPAIR ONLY AS SHOWN IN THE DETAILS. NONE WILL BE REQUIRED FOR THE SCOUR REPAIR.
8. THE COST OF THE FILTER FABRIC WHERE USED WILL BE PAID FOR PER SQ. YD. FOR FILTER FABRIC FOR USE WITH RIPRAP.
9. THE LENGTH AND WIDTH OF THE GABION BASKETS SHALL BE APPROVED BY THE ENGINEER. CELLS SHALL BE AS LABELED BY CELL NO.

Friday, November 27, 2004 @ 2:03:53 PM
 c:\p\projects\1992182\west24-3.dgn LV:2-63