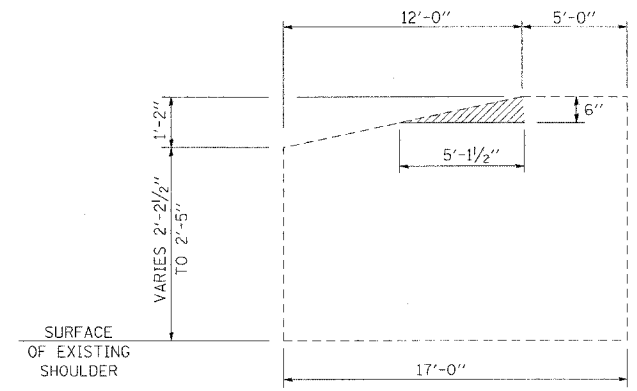
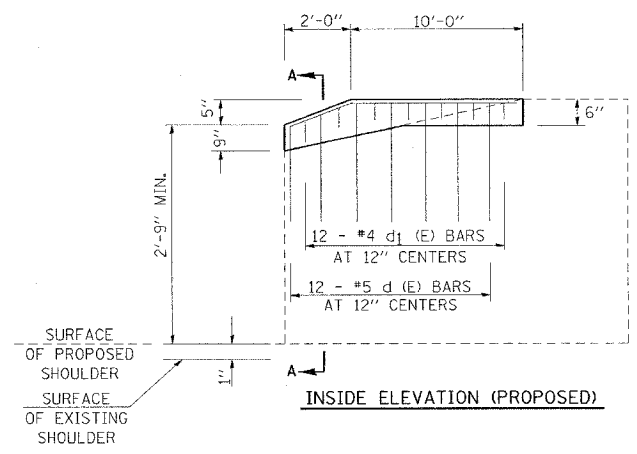


F. A. I. REF.	SECTION	COUNTY	TOTAL SHEETS	SHEET NO.
24	*	**	189	178A
STA.		TO STA.		
FED. ROAD DIST. NO.	ILLINOIS	FED. AID PROJECT		
* X1-2,44(2,3,4)RS,BSMARTFY04-4				
** WILLIAMSON/JOHNSON				
CONTRACT NO. 98758				

WINGWALL MODIFICATION FOR TYPE 6 TERMINAL

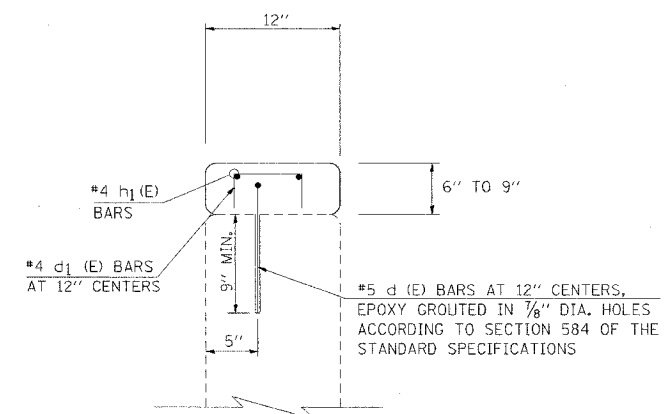


INSIDE ELEVATION (EXISTING)

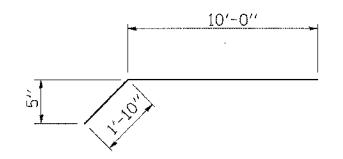


INSIDE ELEVATION (PROPOSED)

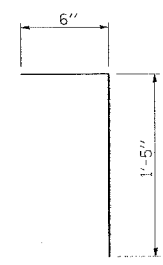
TO BE USED:
SN 044-0029
SN 044-0030



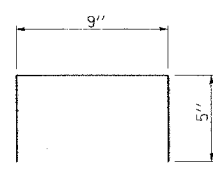
SECTION A-A



BAR h1 (E)



BAR d (E)



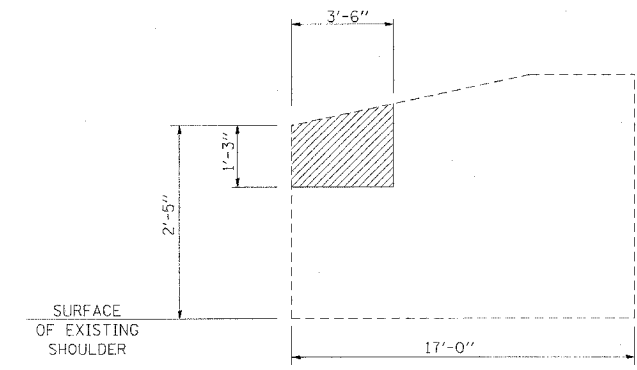
BAR d1 (E)

BILL OF MATERIAL

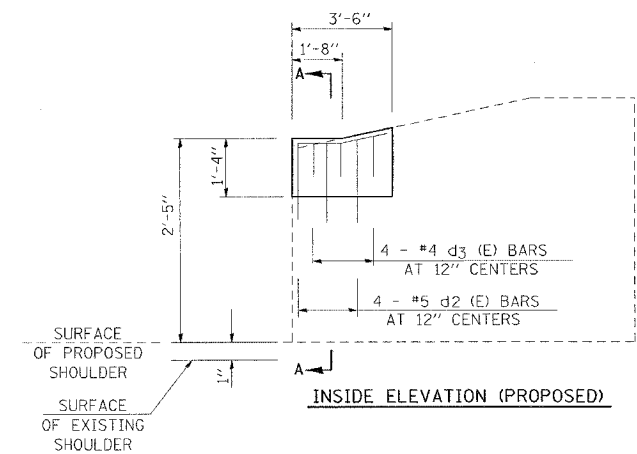
BAR	SIZE	NO.	LENGTH
d (E)	#5	12	1' - 11"
d1 (E)	#4	12	1' - 7"
h1 (E)	#4	2	11' - 10"
CONCRETE REMOVAL			CU YDS 0.1
CONCRETE SUPERSTRUCTURE			CU YDS 0.3
REINFORCEMENT BARS EPOXY COATED			LBS 53

NOTES:
QUANTITIES ARE PER WING WALL.
BARS DESIGNATED (E) SHALL BE EPOXY COATED.
HATCHED AREA INDICATES CONCRETE REMOVAL.

WINGWALL MODIFICATION FOR TYPE 5 TERMINAL

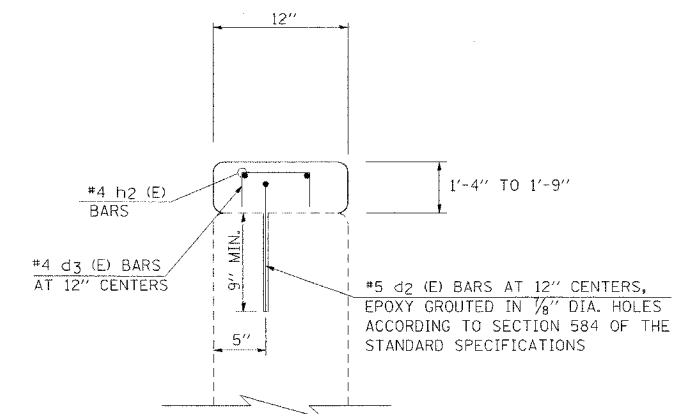


INSIDE ELEVATION (EXISTING)

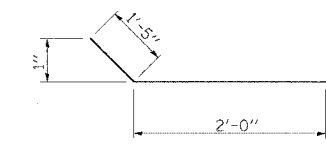


INSIDE ELEVATION (PROPOSED)

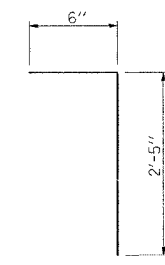
TO BE USED:
SN 044-0030



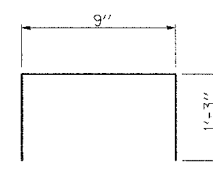
SECTION A-A



BAR h2 (E)



BAR d2 (E)



BAR d3 (E)

BILL OF MATERIAL

BAR	SIZE	NO.	LENGTH
d2 (E)	#5	4	2' - 11"
d3 (E)	#4	4	3' - 3"
h2 (E)	#4	2	3' - 5"
CONCRETE REMOVAL			CU YDS 0.2
CONCRETE SUPERSTRUCTURE			CU YDS 0.2
REINFORCEMENT BARS EPOXY COATED			LBS 25

NOTES:
QUANTITIES ARE PER WING WALL.
BARS DESIGNATED (E) SHALL BE EPOXY COATED.
HATCHED AREA INDICATES CONCRETE REMOVAL.

Wednesday, January 12, 2005 @ 9:55:31 AM
c:\pwp\pcta\982102\west124-2.dgn L:\1-62