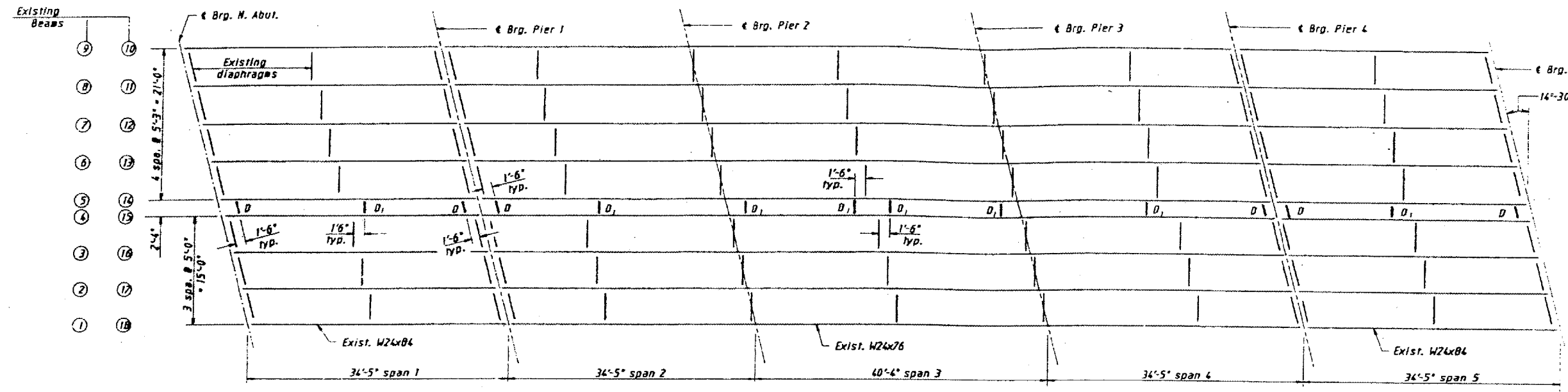


DATE	BY	CHKD.	APP'D.	SHEET NO.
FAL 87	Union E Pulaski	106	100	6
				SHEETS 9

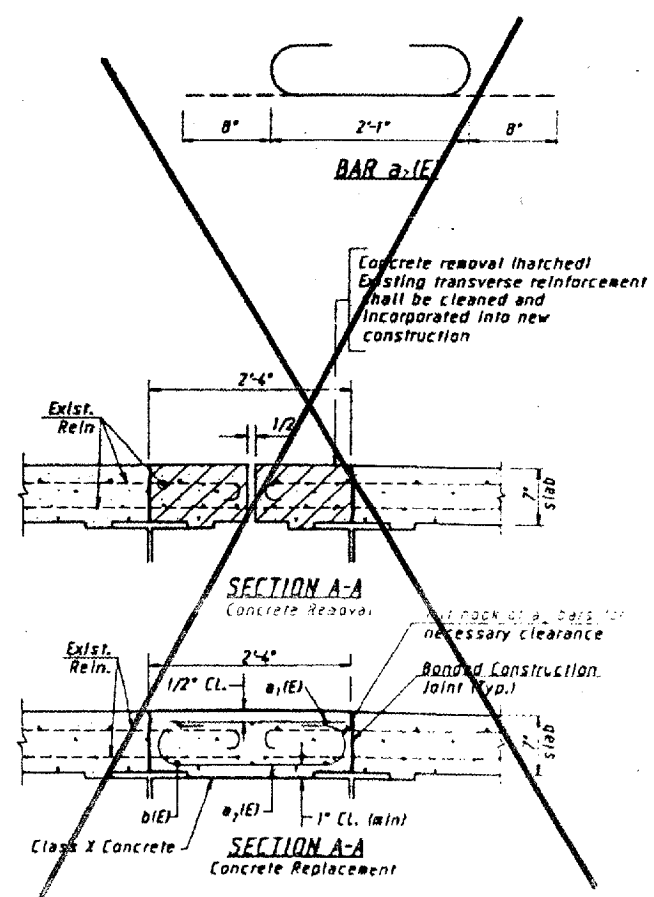
\* 91 (3)B-1, 3B, 3B-1, 4B-1, 4B-2, 4B-2, 11, 77 (1)B, 11B-2, 1VB, 1B-1, 1B-2, 11



**FRAMING PLAN**  
 (New Diaphragms Shown)

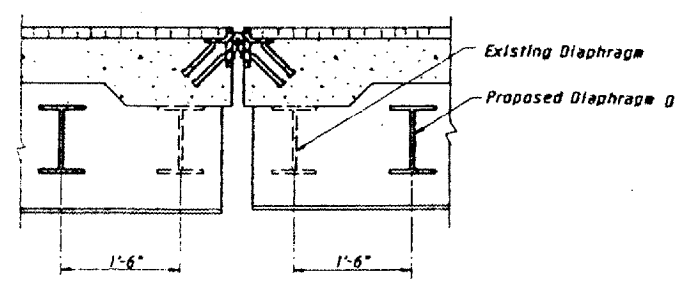
East bridge shown, West bridge opposite hand

**NOTES:** Add Diaphragms D and D, between Beam 4 and 5 (East Bridge) and Beam 14 and 15 (West Bridge) as shown.



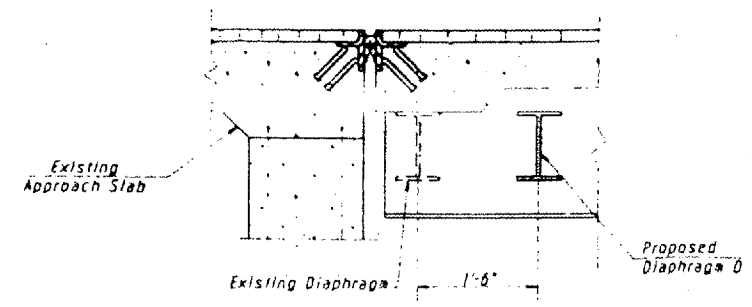
**SECTION A-A**  
 Concrete Removal

**SECTION A-A**  
 Concrete Replacement



**SECTION A-A**

See sheet 4 for location of section



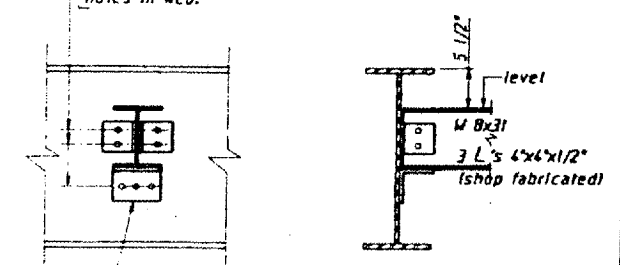
**SECTION A-A**

See sheet 4 for location of section

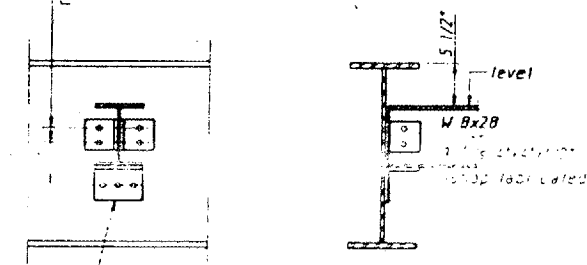
**NOTE:** 2-Hardened washers shall be required over all holes in diaphragm connections.

3/4" H.S. bolts, 15/16" holes in angles. Field drill 13/16" holes in web.

3/4" H.S. bolts, 15/16" holes in angles. Field drill 13/16" holes in web.



**DIAPHRAGM D**  
 12 required - 2 bridges



**DIAPHRAGM D**  
 116 required - 2 bridges

**STRUCTURAL STEEL DETAILS**

FOR INFORMATION ONLY:

BRIDGE  
 Review  
 DATE May 1986  
 1-0072-30

BRIDGE NO. 3 STRUCTURE 077-0005

BRIDGE NO. 4 STRUCTURE 077-0006