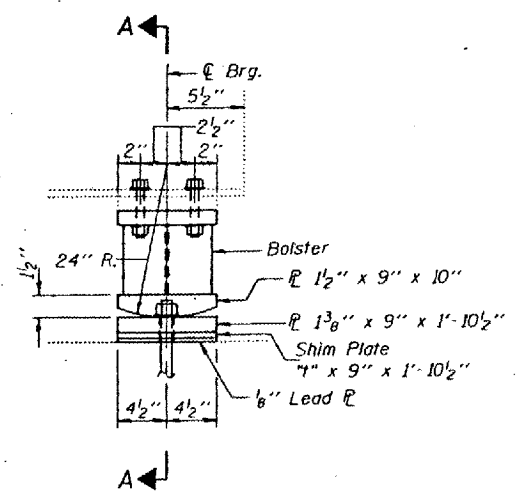
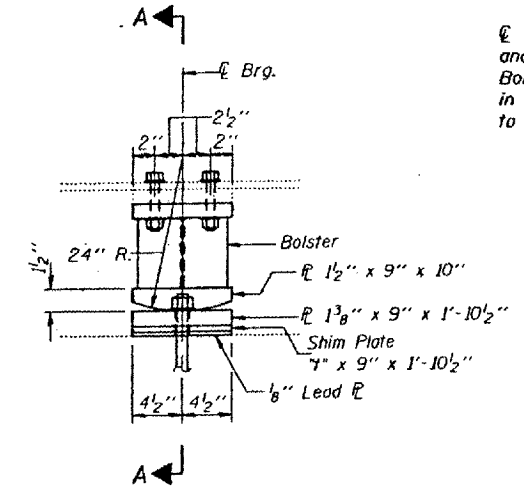


STATE OF ILLINOIS
 DEPARTMENT OF TRANSPORTATION

F.A.I. 57
 PROJECT NO. 77(15,18-1,18-2)I-1



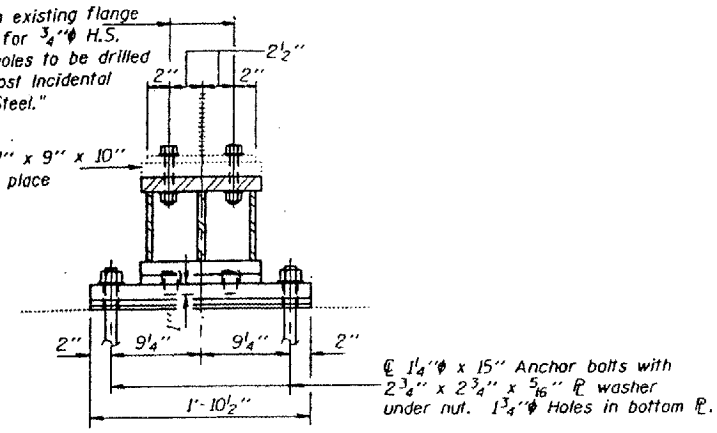
ELEVATION AT BENT #1 (SPAN 1)
 AND BENT #4 (SPAN 5)



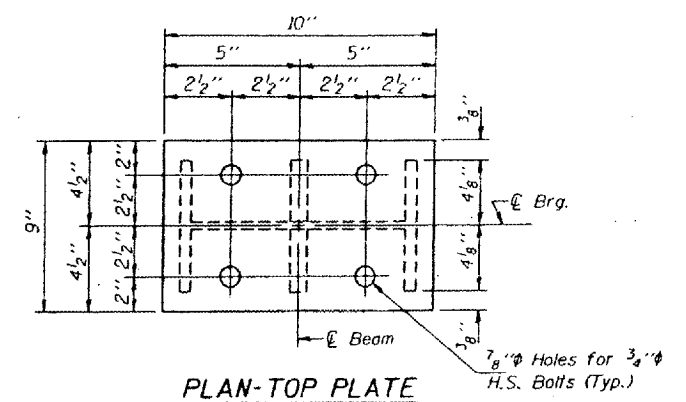
ELEVATION AT PIER #2

7/8" holes in existing flange and existing R for 3/4" H.S. Bolts. These holes to be drilled in the field. Cost incidental to "Structural Steel."

Existing R 1" x 9" x 10" to remain in place

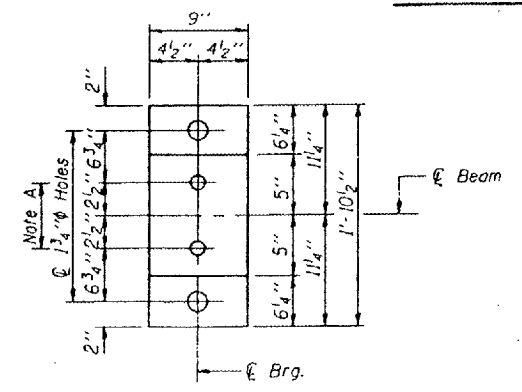


SECTION A-A

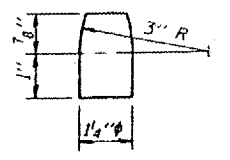


PLAN-TOP PLATE

FIXED BEARING

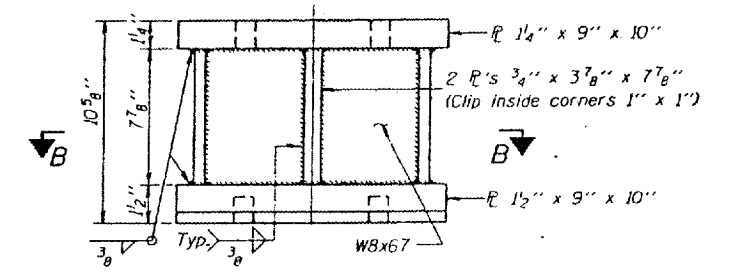


PLAN



PINTLE

Notes: For anchor bolt installation details see sheet #7 of 7. See sheet #5 of 7 for Jack and Remove Existing Bearing Procedure.



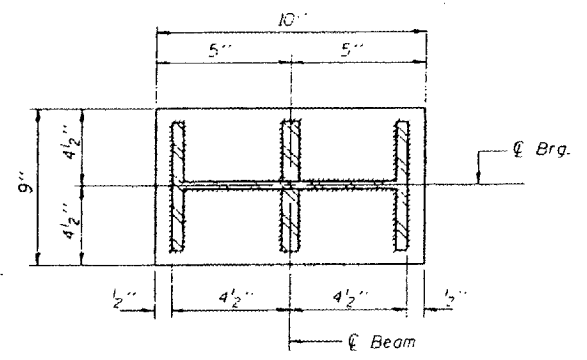
BOLSTER AT BENT #1 (SPAN 1),
 BENT #4 (SPAN 5) AND PIER #2

Equivalent welded plates will be allowed in lieu of WBx67 section.

TABLE OF "I" DIMENSIONS

Location	N. Abut.	Bent #1 Span 1	Bent #1 Span 2	Pier #2	Pier #3	Bent #4 Span 4	Bent #4 Span 5	S. Abut.
Beams #1 & #18	4"	4"	4"	4"	4"	4"	4"	4"
Beams #2 & #17	4"	4"	4"	4"	4"	4"	4"	4"
Beams #3 & #16	4"	4"	4"	4"	4"	4"	4"	4"
Beams #4 & #15	4"	4"	4"	4"	4"	4"	4"	4"
Beams #5 & #14	4"	4"	4"	4"	4"	4"	4"	4"
Beams #6 & #13	4"	4"	4"	4"	4"	4"	4"	4"
Beams #7 & #12	4"	4"	4"	4"	4"	4"	4"	4"
Beams #8 & #11	4"	4"	4"	4"	4"	4"	4"	4"
Beams #9 & #10	4"	4"	4"	4"	4"	4"	4"	4"

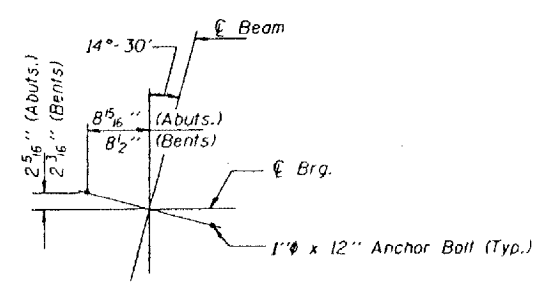
* Shim R if required.
 ** Based on existing plans. The Contractor shall verify and, if necessary, make adjustments to match existing bearing heights.



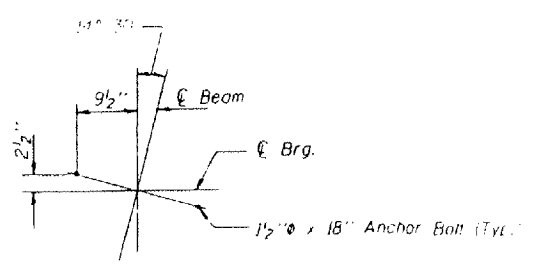
SECTION B-B

TWO STRUCTURES
 BILL OF MATERIAL

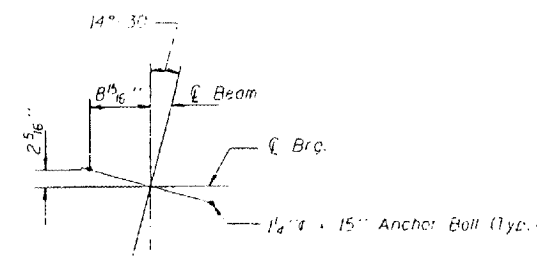
Item	Unit	Total
Jack and Remove Existing Bearings	Each	54



PLAN AT ABUTS.,
 BENT #1 (SPAN 2) & BENT #4 (SPAN 4)



PLAN AT PIER #3



PLAN AT BENT #1 (SPAN 1),
 BENT #4 (SPAN 5) & PIER #2

DESIGNED: [Signature]
 CHECKED: [Signature]
 DRAWN: R. Only
 CHECKED SDS, ALL

May 16 1994
 EXAMINED: [Signature]
 PASSED: [Signature]

FOR INFORMATION ONLY:
 BRIDGE NO. 3 STRUCTURE 077-0005
 BRIDGE NO. 4 STRUCTURE 077-0006