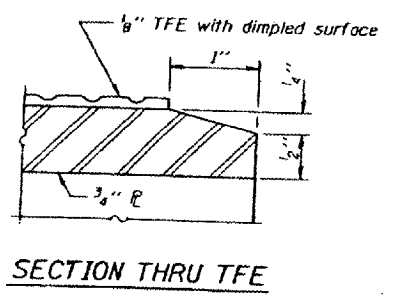
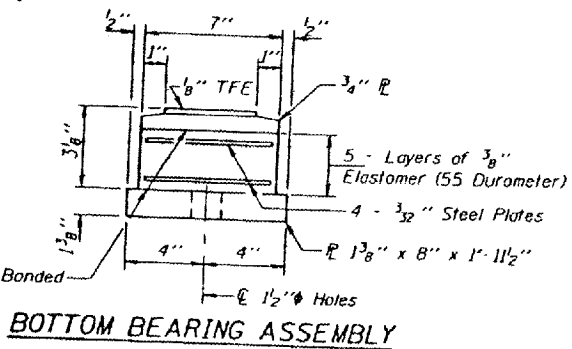
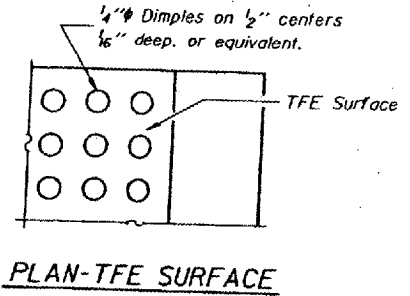
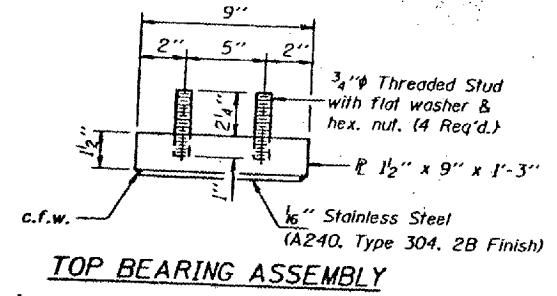
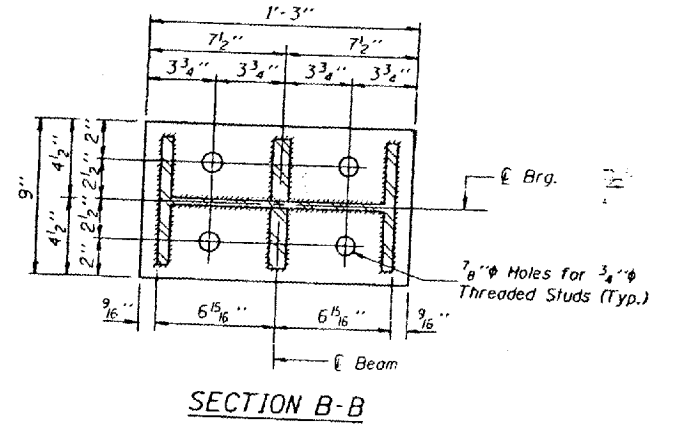
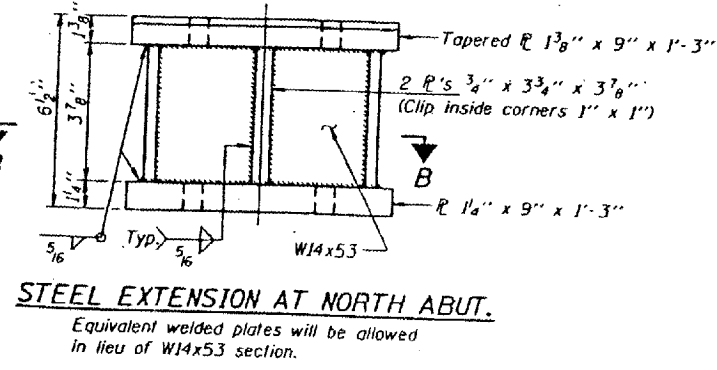
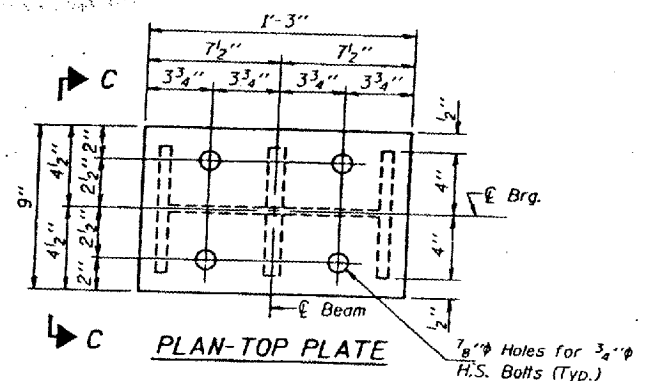
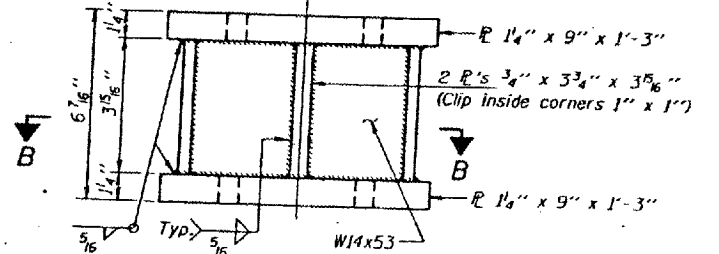
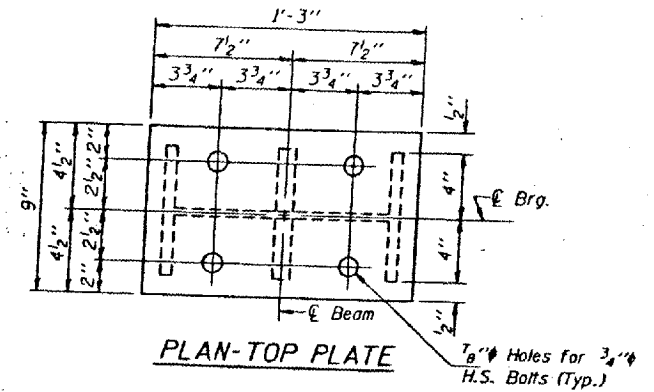
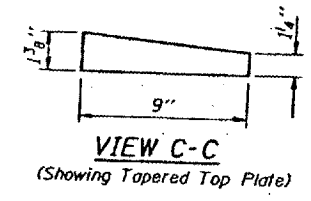
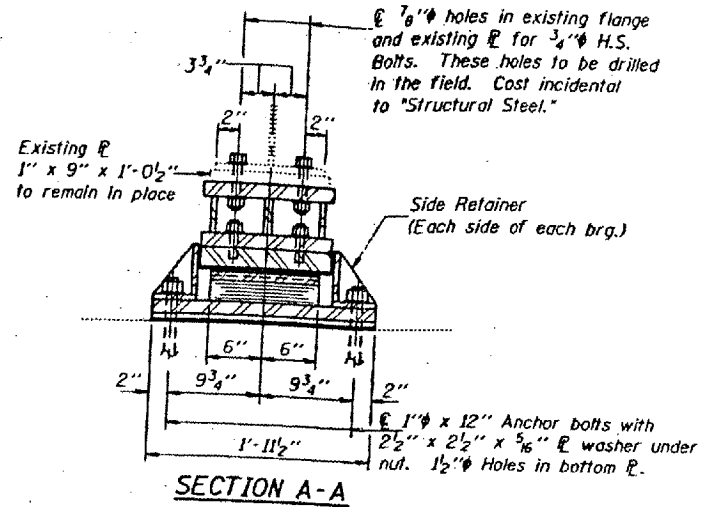
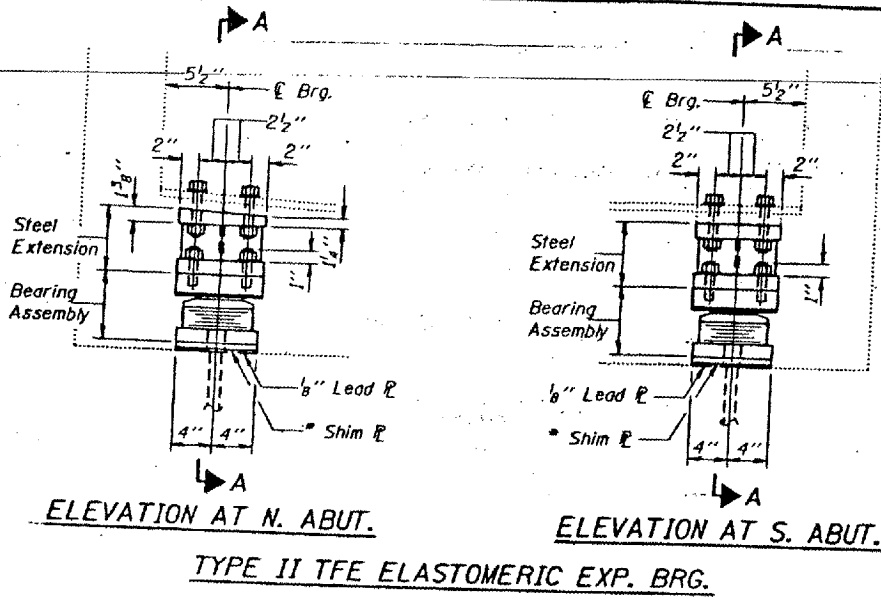


NO.	SECTION	DATE	BY	CHKD.	SHEET NO.
F.A.T. 57	*	PLASKI	24	12	8 SHEETS

* 77(1B,1B-1,1B-2)I-1

STATE OF ILLINOIS
 DEPARTMENT OF TRANSPORTATION



Note: The 1/8" TFE sheet shall be bonded directly to the top steel plate with a two-component, medium viscosity epoxy resin, conforming to the requirements of the Federal Specification MMM-A-134, Type I. The bond agent shall be applied on the full area of the contact surfaces.

Bonding of 1/8" TFE sheet during vulcanizing process will be permitted provided the process and method of adjusting assembly height is approved by the Engineer.

* Shim ϕ 1/4" x 8" x 1'-11 1/2" (Beams #4 & #11 only)

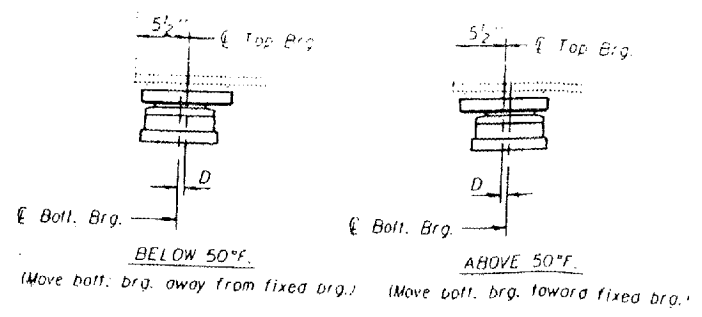
Notes: For anchor bolt installation details see sheet #8 of B. See sheet #4 of B for Jack and Remove Existing Bearing Procedure.

DESIGNED	<i>Just D. Jorgensen</i>
CHECKED	<i>Just D. Jorgensen</i>
DRAWN	R. Dots
CHECKED	SDS A.Y.V.

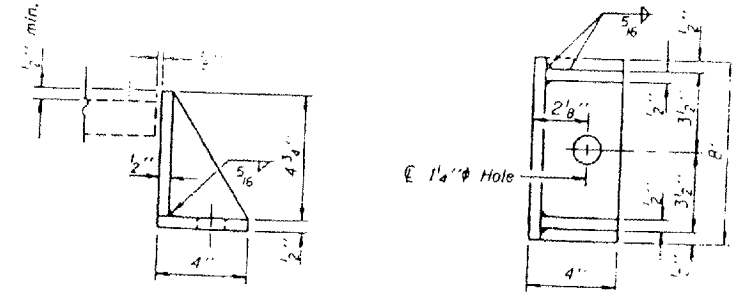
May 16 1994

EXAMINED *Ralph E. Anderson*
 ENGINEER OF BRIDGES AND STRUCTURES

PASSED *Ralph E. Anderson*
 ENGINEER OF BRIDGES AND STRUCTURES



U = 1/8" per each 100 of expansion for every 15° temp. change from the normal temp. of 50° F.



TWO STRUCTURES
 BILL OF MATERIAL

Item	Unit	Total
Elastomeric Bearing Assembly, Type II	Each	28
Jack and Remove Existing Bearings	Each	28

FOR INFORMATION ONLY:

BRIDGE NO. 5 STRUCTURE 077-0007

BRIDGE NO. 6 STRUCTURE 077-0008