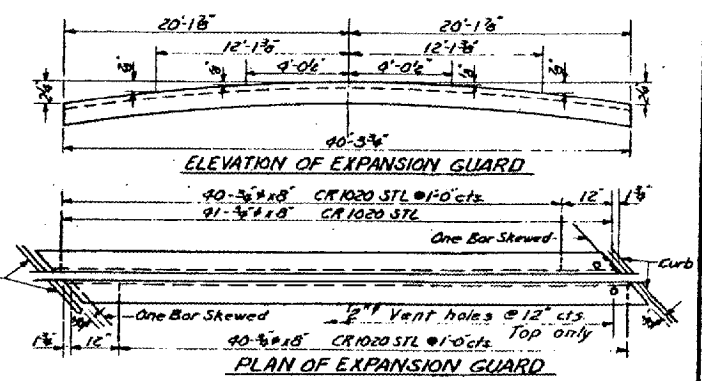
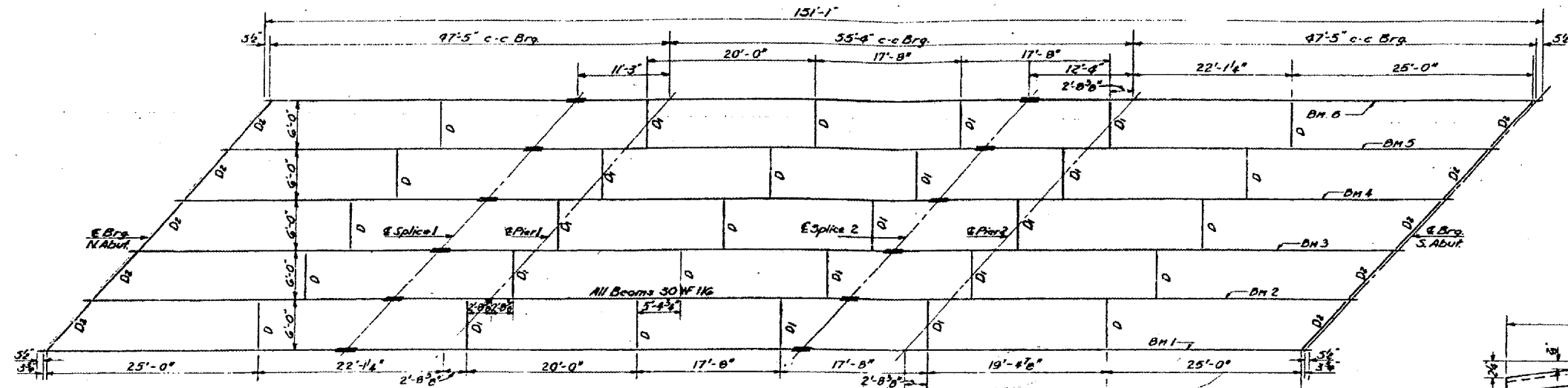
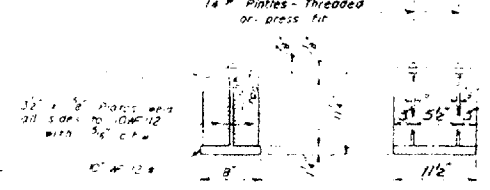
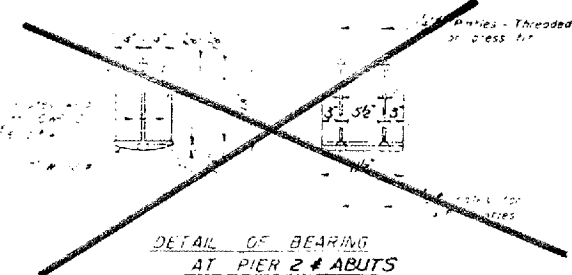
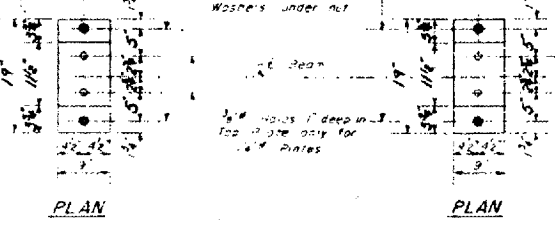
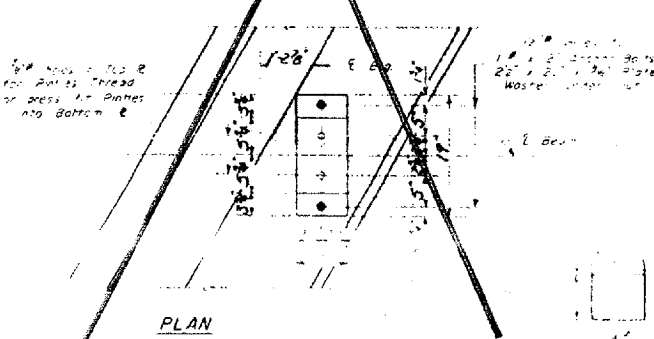
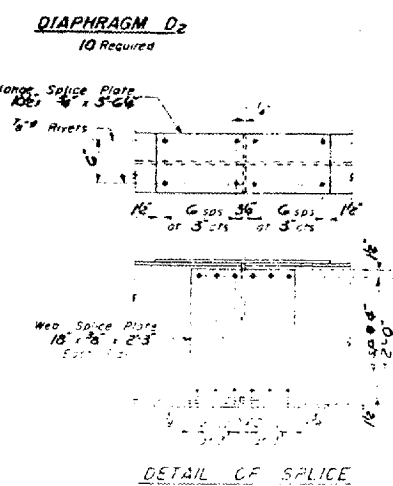
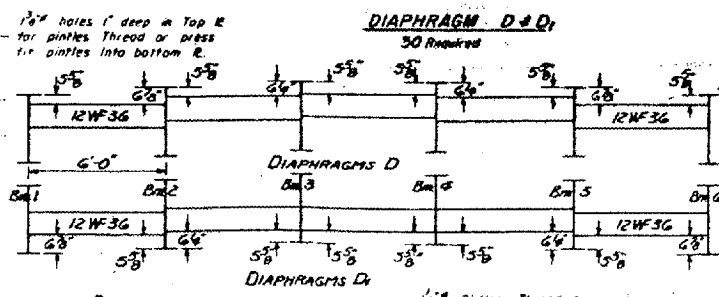
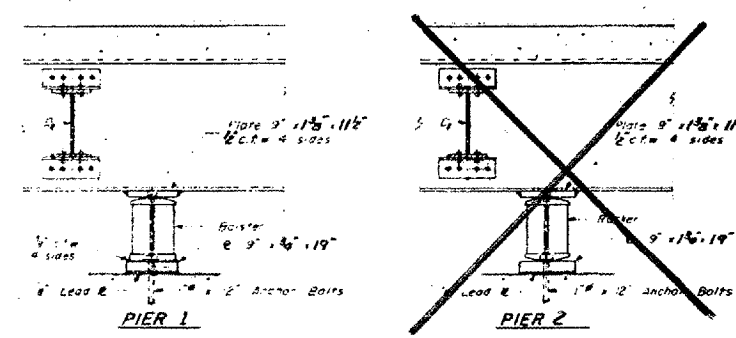
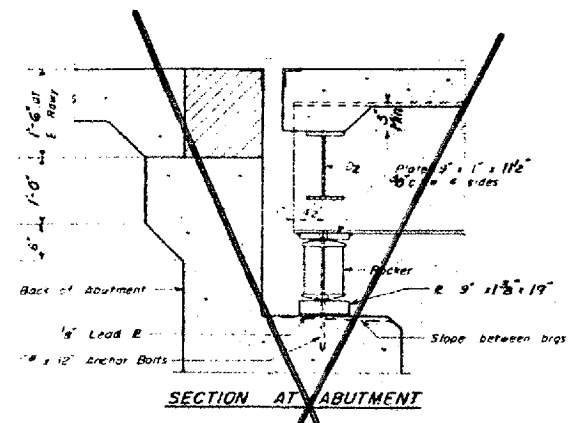


STATE OF ILLINOIS
 DEPARTMENT OF PUBLIC WORKS & BUILDINGS
 DIVISION OF HIGHWAYS



ELEVATION TOP OF BEAMS

	Beam 1	Beam 2	Beam 3	Beam 4	Beam 5	Beam 6
E Brg. N Abut	356.69	356.80	356.86	356.86	356.80	356.69
Splice 1	356.69	356.80	356.86	356.86	356.80	356.69
Pier 1	356.69	356.80	356.86	356.86	356.80	356.69
Splice 2	356.69	356.80	356.86	356.86	356.80	356.69
Pier 2	356.69	356.80	356.86	356.86	356.80	356.69
E Brg. S Abut	356.69	356.80	356.86	356.86	356.80	356.69



DESIGNED BY: E. Broad, J. Spang
 CHECKED BY: J. M. Spang, J.L. Armstrong
 DATE: JUNE 19, 1959
 DRAWN BY: R.H. Bantelmy

FOR INFORMATION ONLY:
 BRIDGE NO. 7 STRUCTURE 077-0013
 BRIDGE NO. 8 STRUCTURE 077-0014

REV 2-14-62 WLP Changed 3/4" AB X 2" CR to 1/2" AB CR Stud Also Add 2" Vent holes to Exp Guard Angles.