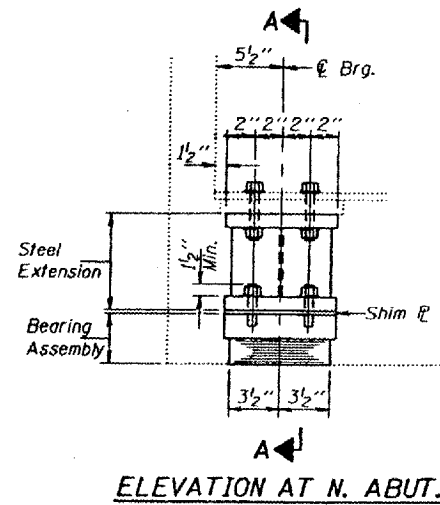
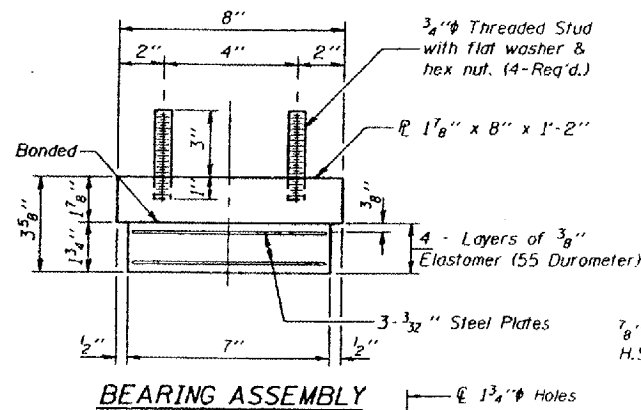


STATE OF ILLINOIS
 DEPARTMENT OF TRANSPORTATION

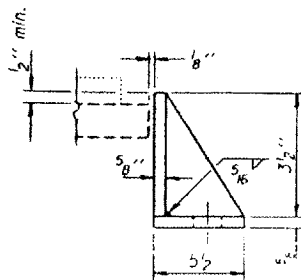
| | | | |
|---------------------------|---------|----------|---|
| SHEET NO.: | | 30 OF 31 | |
| F.A.I. ST. # | PULASKI | 24 | 6 |
| * 77 (1B, 1B-1, 1B-2) I-1 | | | |
| 6 SHEETS | | | |



TYPE I ELASTOMERIC EXP. BRG.



BEARING ASSEMBLY

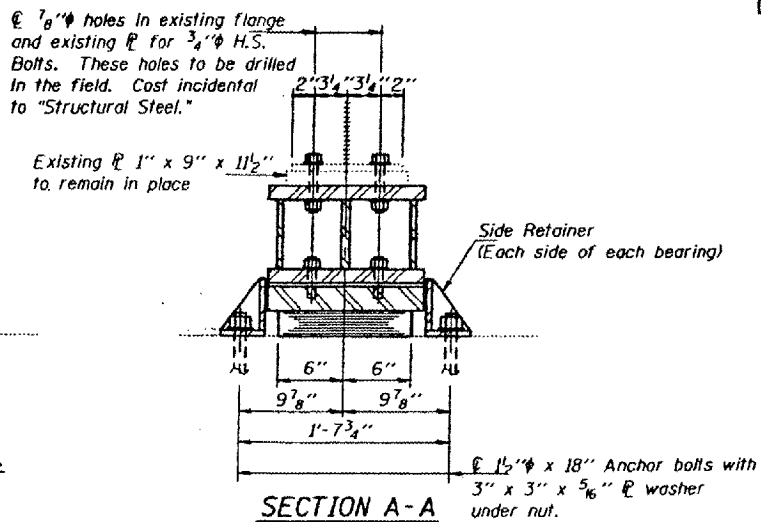


SIDE RETAINER AT N. ABUT.

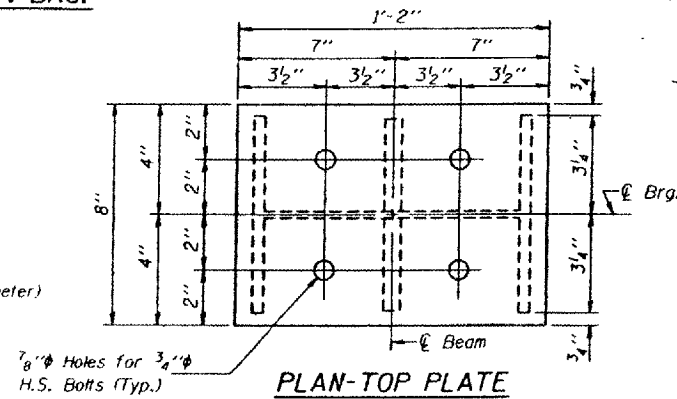
Equivalent rolled angle with stiffeners will be allowed in lieu of welded plates. Weight included with Structural Steel.

| | |
|----------|------------------|
| DESIGNED | John O. Sanford |
| CHECKED | Anthony J. Lewis |
| DRAWN | R. Doty |
| CHECKED | SOS H.V.V. |

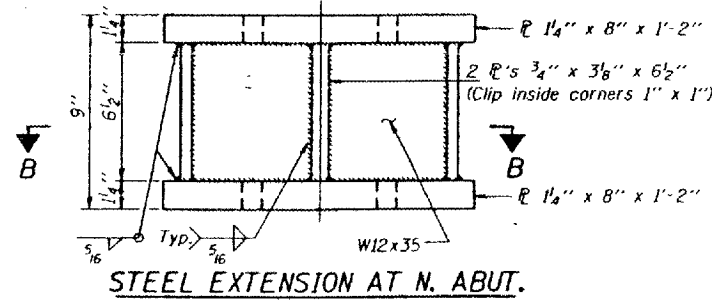
| | |
|----------|-------------------|
| EXAMINED | May 16 1994 |
| PASSED | Ralph E. Anderson |



SECTION A-A

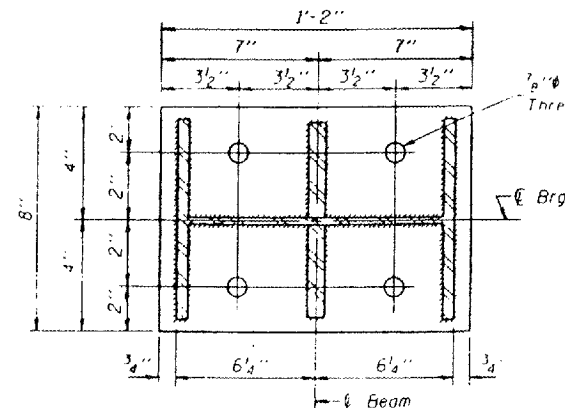


PLAN-TOP PLATE

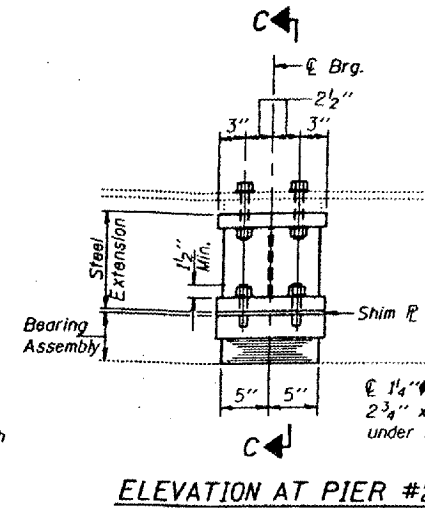


STEEL EXTENSION AT N. ABUT.

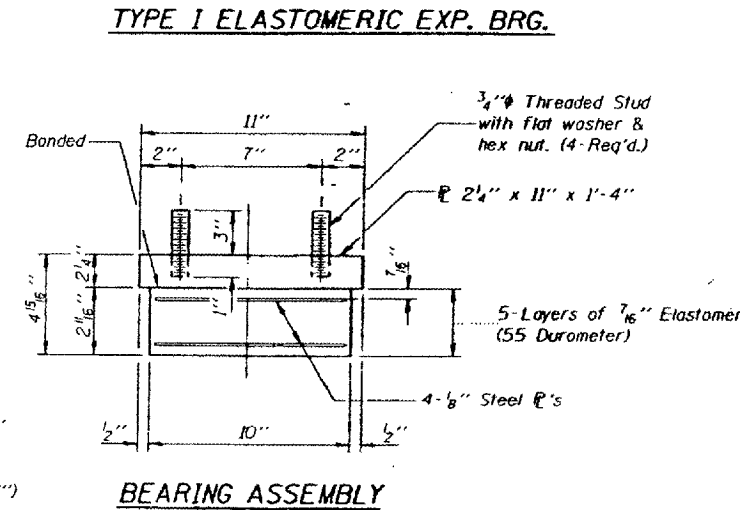
Equivalent welded plates will be allowed in lieu of W12x35 section.



SECTION B-B

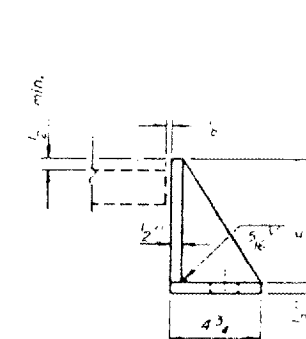


ELEVATION AT PIER #2



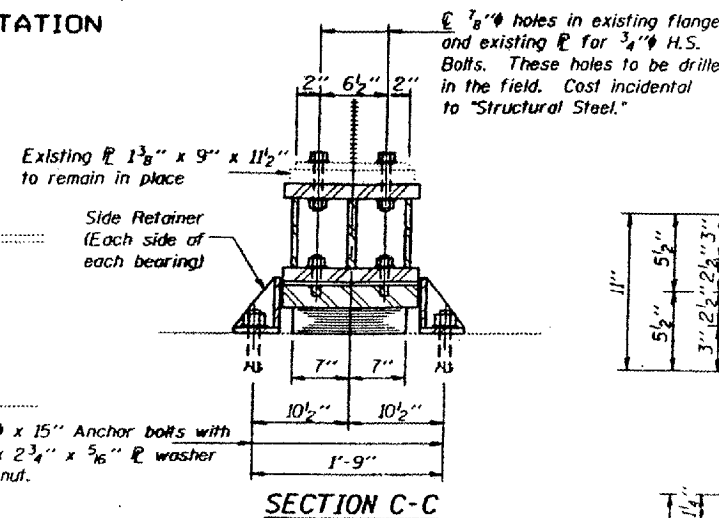
BEARING ASSEMBLY

Notes: For anchor bolt installation details see sheet #6 of 6. See sheet #5 of 6 for Jack and Remove Existing Bearing Procedure. Shim plates shall not be placed under Bearing Assembly. For anchor bolt location see sheet #4 of 6.

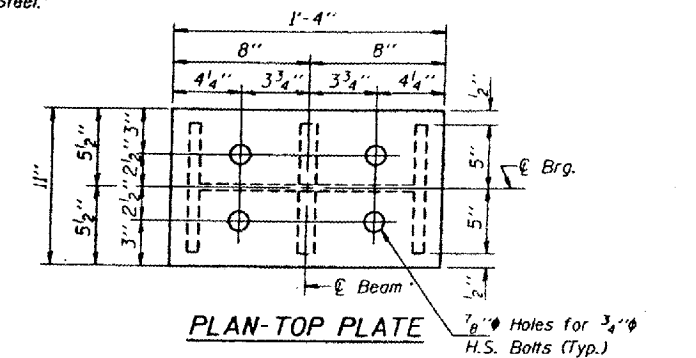


SIDE RETAINER AT PIER #2

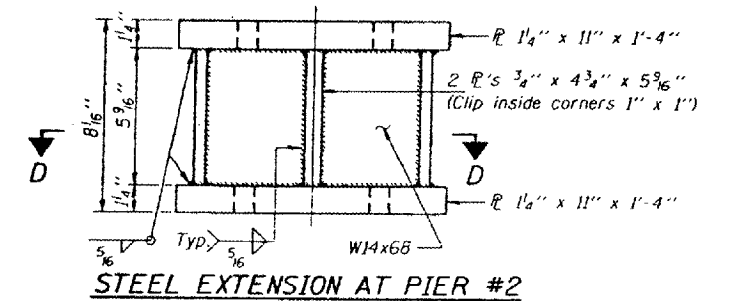
Equivalent rolled angle with stiffeners will be allowed in lieu of welded plates. Weight included with Structural Steel.



SECTION C-C

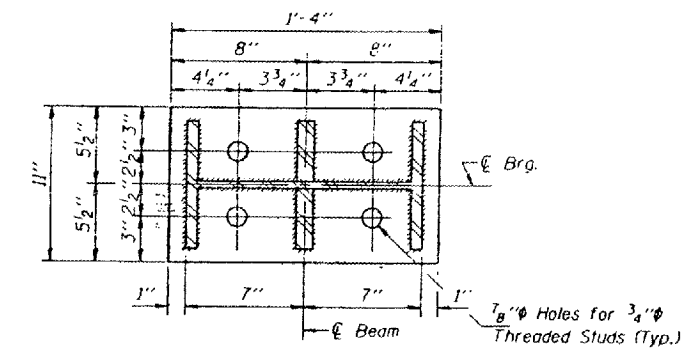


PLAN-TOP PLATE



STEEL EXTENSION AT PIER #2

Equivalent welded plates will be allowed in lieu of W14x68 section.



SECTION D-D

TWO STRUCTURES
 BILL OF MATERIAL

| Item | Unit | Quantity |
|-------------------------------------|------|----------|
| Elastomeric Bearing Assembly Type I | Each | 24 |
| Jack and Remove Existing Bearings | Each | 24 |

FOR INFORMATION ONLY:

BRIDGE NO. 7 STRUCTURE 077-0013

BRIDGE NO. 8 STRUCTURE 077-0014