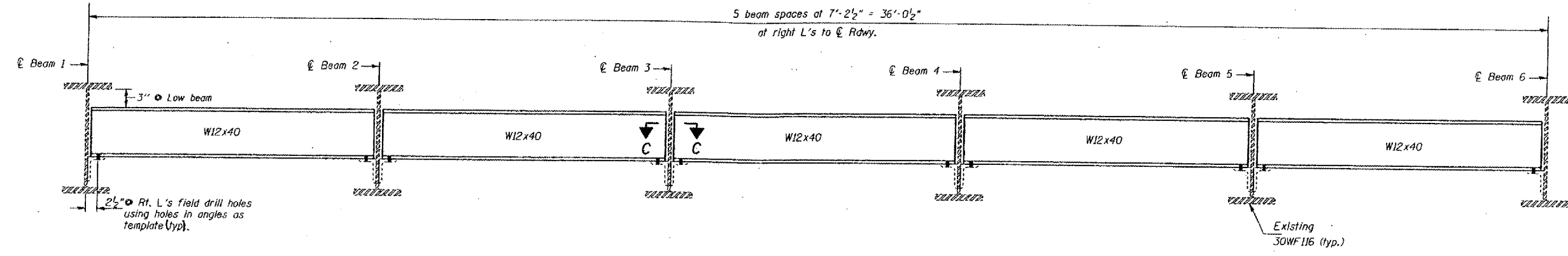


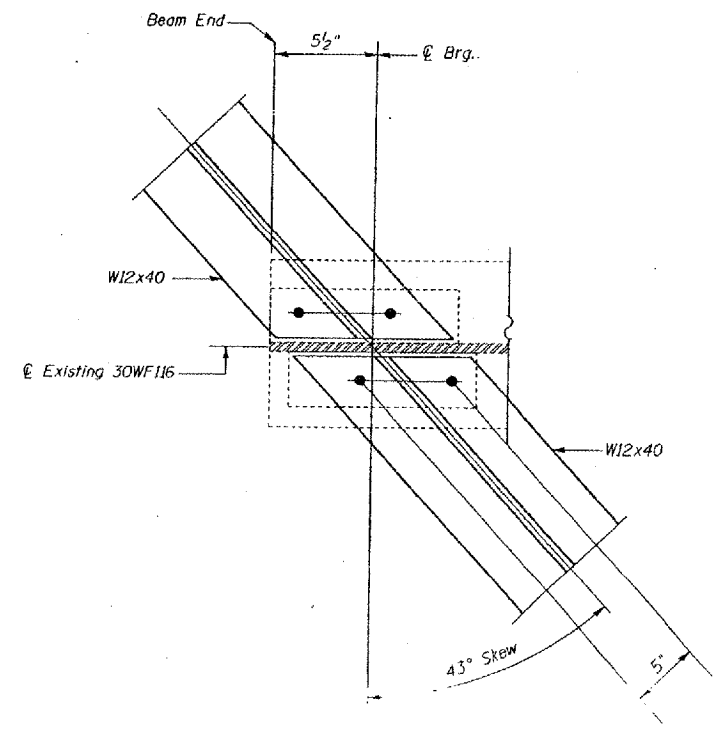
STATE OF ILLINOIS  
 DEPARTMENT OF TRANSPORTATION

ROUTE NO.	SECTION	COUNTY	SHEET NO.	SHEET NO.
F.A.I. 24	*	MASSAC	234	146
FED. ROAD DIST. NO. 7		ILLINOIS		FED. AID PROJECT
* 64(1.2-1.3-1.3)RS-1 BSMART FY2002-2				

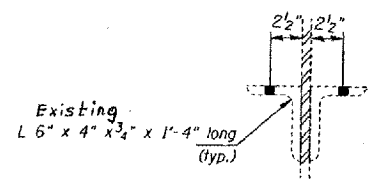


**DIAPHRAGM REPLACEMENT AT ABUTMENTS**

Required: 20 - W12 x 40 x 9'-9 3/8" long



SECTION C-C



CLIP ANGLES

DESIGNED:	CMW
CHECKED:	TWH
DRAWN:	CMW
CHECKED:	TWH

Notes: 5/16"  $\phi$  Holes for new 3/4" H.S. Bolts shall be used for all diaphragm connections. Two hardened washers shall be required at diaphragm connections. Existing clip angles are welded to the webs and are to be reused.

FOR INFORMATION ONLY:  
 BRIDGE NO. 1 STRUCTURE 064-0017  
 BRIDGE NO. 2 STRUCTURE 064-0018

THE JUL 5 09 51 AM 2009  
 C:\P\064-0017\064-0017-12.dwg L:\11-43