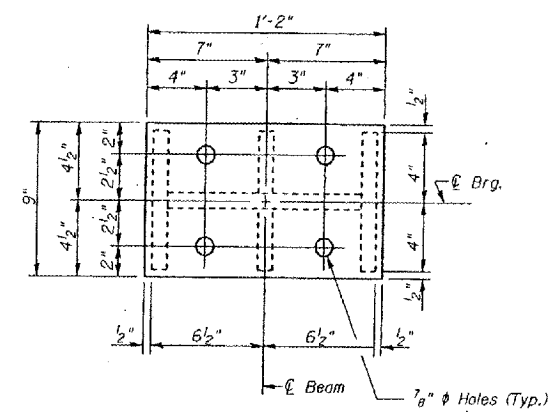
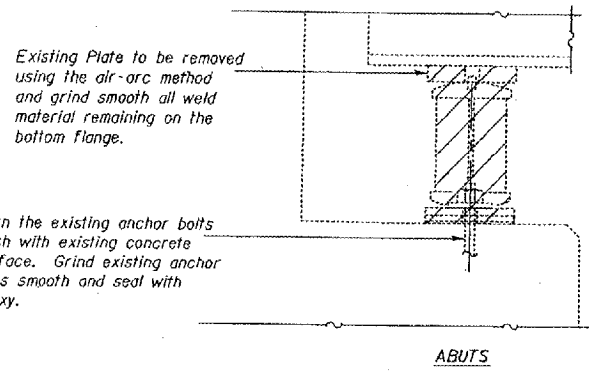
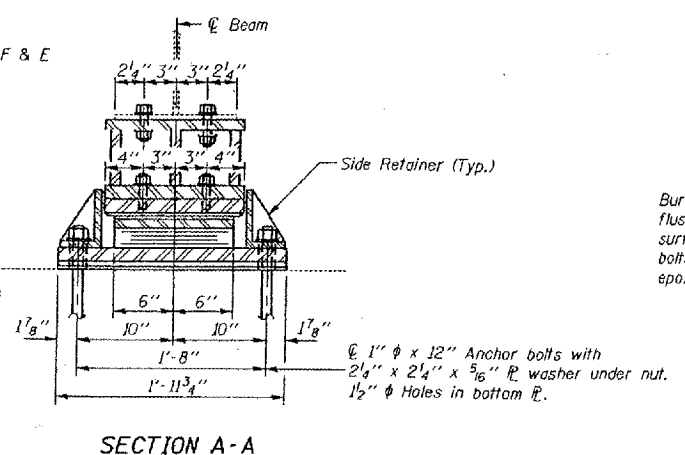
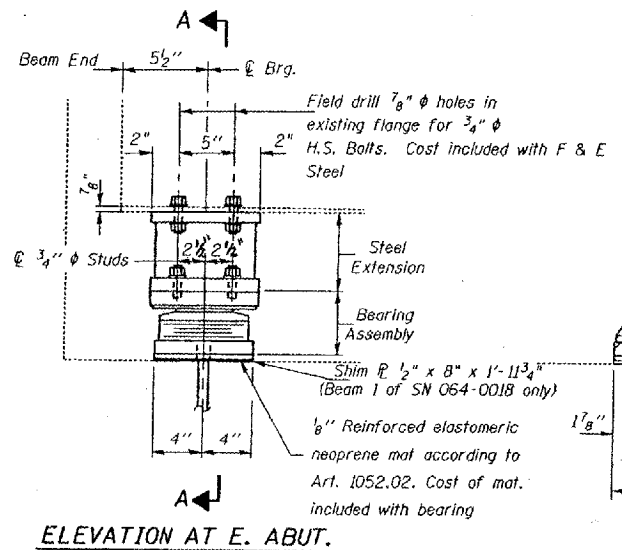


STATE OF ILLINOIS
 DEPARTMENT OF TRANSPORTATION

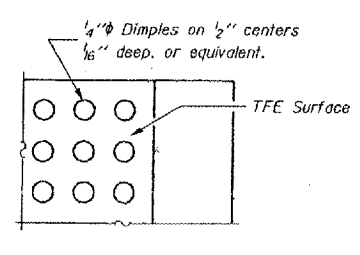
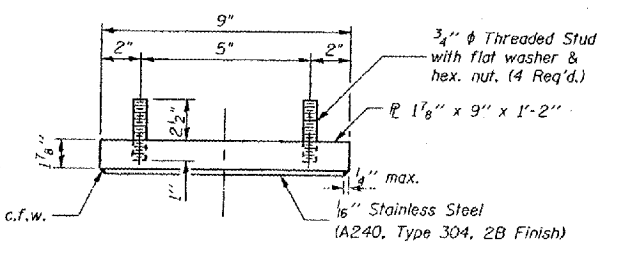
ROUTE NO.	SECTION	COUNTY	SHEETS	POST	SHEET NO.
F.A.I. 24	3	MASSAC	234	149	
FED. ROAD DIST. NO. 7					
ALABAMA					
FED. ROAD DIST. NO. 7					

* 6411.2-2-1.3-1.3RS-1 BSMART FY2002-2

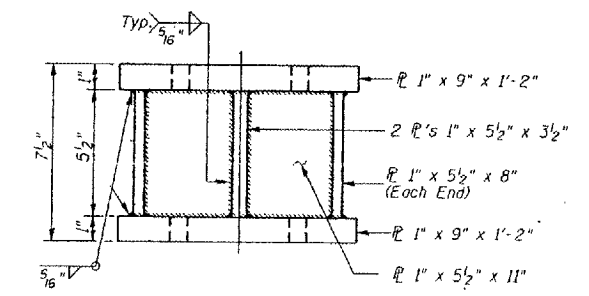


TYPE II TFE ELASTOMERIC EXP. BRG.

Notes: See sheet 151 for Anchor Bolt installation.

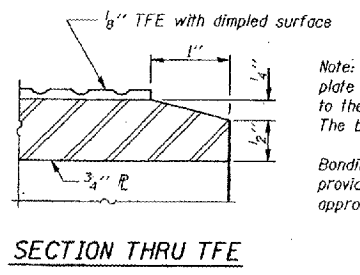
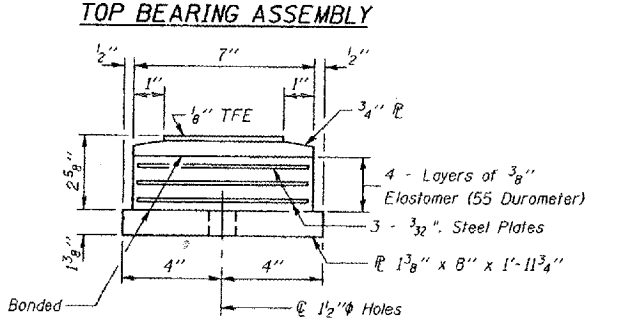


Notes:
 Prior to ordering any material, the Contractor shall verify in the field all bearing height and shim thickness dimensions. The minimum jack capacity required is 35 Tons.
 New steel extensions, side retainers, connection bolts, any shim and anchor bolts are included in "Furnishing and Erecting Structural Steel".
 Hatched areas indicate Jack and Remove Existing Bearings. Existing diaphragm removal and new diaphragm erection shall be coordinated with drilling holes in bottom flange for bearing attachment, if necessary, to provide clearance for the drill.

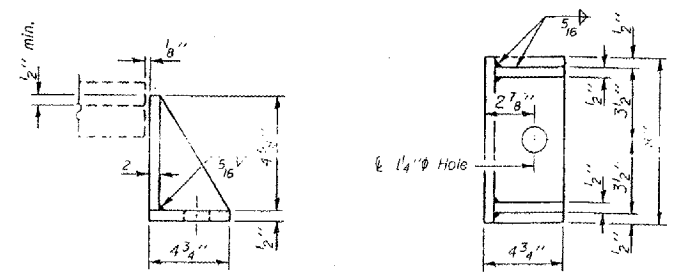


GIRDER REACTIONS

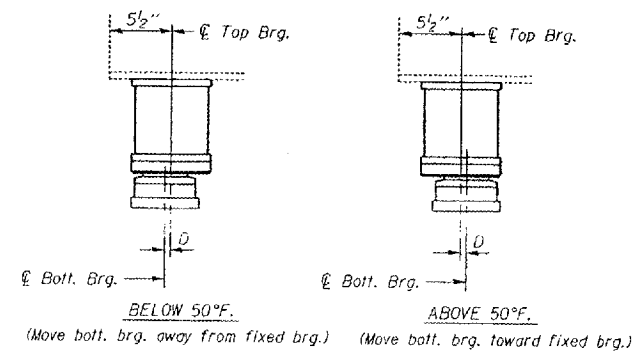
RP	(K)	21.81
RL	(K)	35.36
Imp.	(K)	10.61
R (Total)	(K)	67.78



Note: The 1/8" TFE sheet shall be bonded directly to the top steel plate with a two-component, medium viscosity epoxy resin, conforming to the requirements of the Federal Specification MMM-A-134, Type I. The bond agent shall be applied on the full area of the contact surfaces.
 Bonding of 1/8" TFE sheet during vulcanizing process will be permitted provided the process and method of adjusting assembly height is approved by the Engineer.



SIDE RETAINER
 Equivalent rolled angle with stiffeners will be allowed in lieu of welded plates.



SETTING ANCHOR BOLTS AT EXP. BRG.
 D=1/8" per each 100' of expansion for every 15° temp. change from the normal temp. of 50°F.

BILL OF MATERIAL

Item	Unit	Total
Elastomeric Bearing Assembly Type II	Each	12
Jack and Remove Existing Bearings	Each	1

EAST ABUTMENT

FOR INFORMATION ONLY:

BRIDGE NO. 1 STRUCTURE RE 064-0017

BRIDGE NO. 2 STRUCTURE 064-0018

DESIGNED:	CMW
CHECKED:	TWH
DRAWN:	CMW
CHECKED:	TWH

The Jul 5 09:55:06 2009
 C:\PROJECTS\064000\064000.dwg LVH:R3