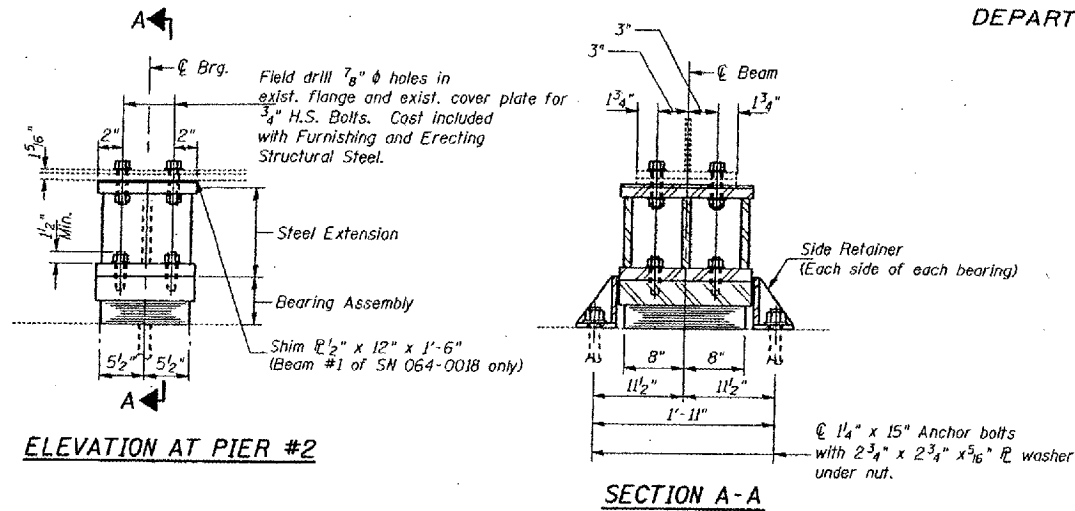


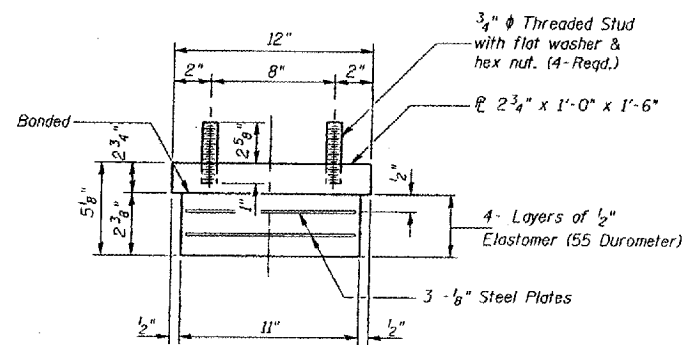
STATE OF ILLINOIS
 DEPARTMENT OF TRANSPORTATION

ROUTE NO.	SECTION	COUNTY	SHEETS	DATE	SHEET NO.
F.A.I. 24	*	MASSAC	234	150	
FED. ROAD DIST. NO. 7					SHEETS
* 64(L2,2-L3-L3/R3-1) BS/MRT FY2002-2					

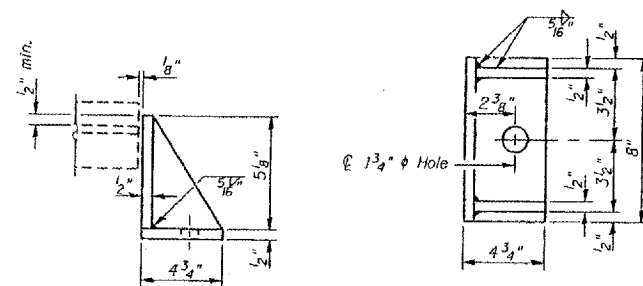


TYPE I ELASTOMERIC EXP. BRG.

Notes: See sheet 151 for Anchor Bolt installation.

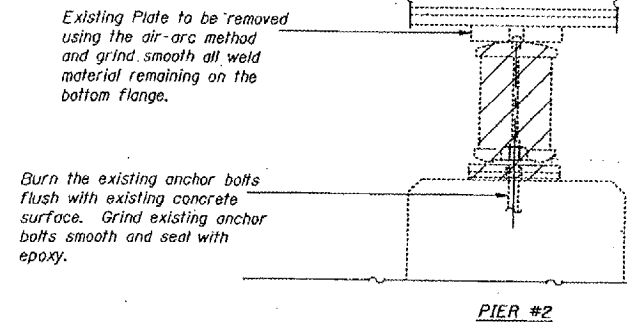


BEARING ASSEMBLY

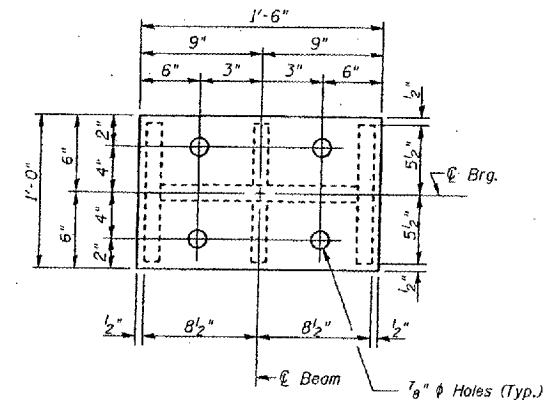


SIDE RETAINER

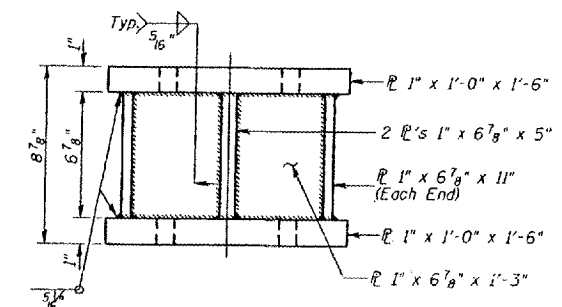
DESIGNED:	CMW
CHECKED:	TWH
DRAWN:	CMW
CHECKED:	TWH



EXISTING BEARING REMOVAL DETAILS



PLAN-TOP & BOTTOM PLATE



GIRDER REACTIONS

RP	(K)	75.52
Rt	(K)	44.58
Imp.	(K)	13.37
R (Total)	(K)	133.47

Notes:

Prior to ordering any material, the Contractor shall verify in the field all bearing height and shim thickness dimensions. The minimum jack capacity required is 75 Tons. New steel extensions, side retainers, connection bolts, any shim and anchor bolts are included in "Furnishing and Erecting Structural Steel". Hatched areas indicate Jack and Remove Existing Bearings. Existing diaphragm removal and new diaphragm erection shall be coordinated with drilling holes in bottom flange for bearing attachment, if necessary, to provide clearance for the drill.

BILL OF MATERIAL

Item	Unit	Total
Elastomeric Bearing Assembly Type I	Each	12
Jack and Remove Existing Bearings	Each	12

PIER #2

TYPE I ELASTOMERIC BEARING

FOR INFORMATION ONLY:

BRIDGE NO. 1 STRUCTURE 064-0017

BRIDGE NO. 2 STRUCTURE 064-0018