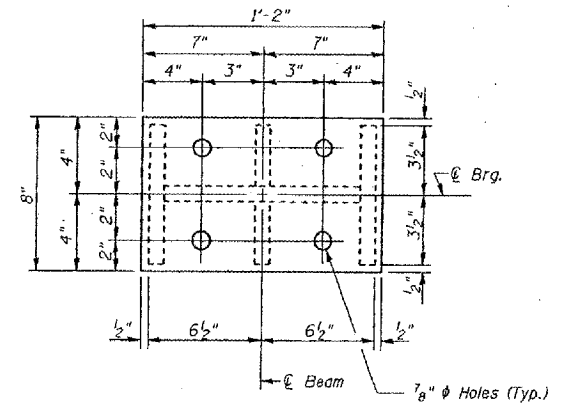
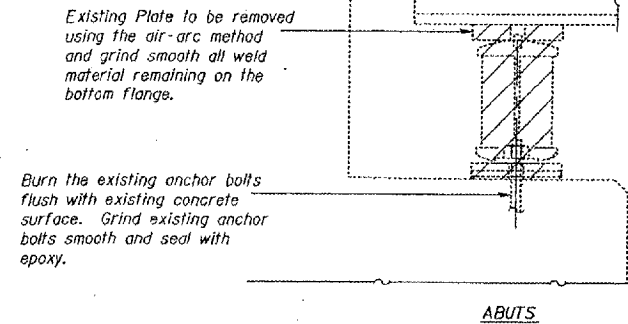
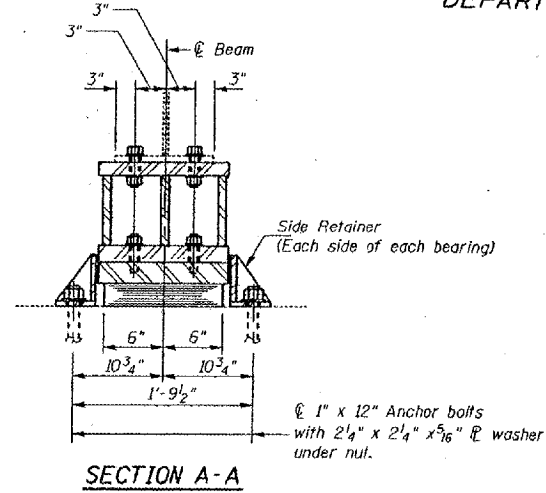
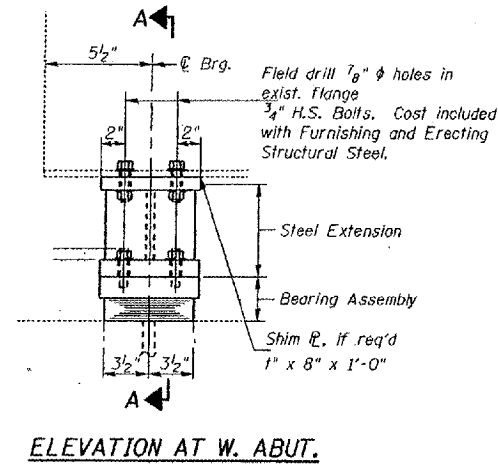


STATE OF ILLINOIS  
 DEPARTMENT OF TRANSPORTATION

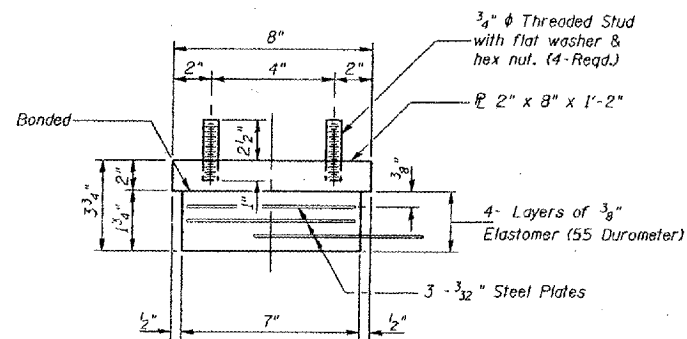
ROUTE NO.	SECTION	COUNTY	SHEET	TOTAL	SHEET NO.
F.A.I. 24	*	MASSAC	234	167	SHEETS

#-641L2.2-1.3-1.31RS-1 BSMART FY2002-2



**TYPE I ELASTOMERIC EXP. BRG.**

Notes: See sheet 172 for Anchor Bolt installation.

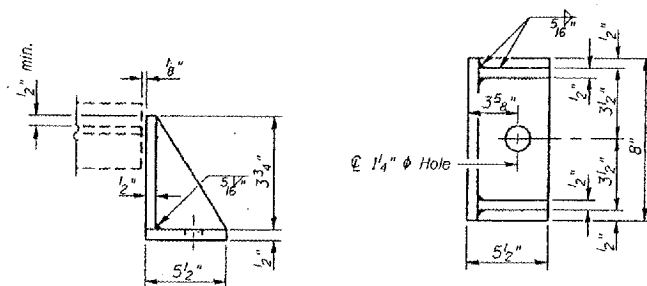
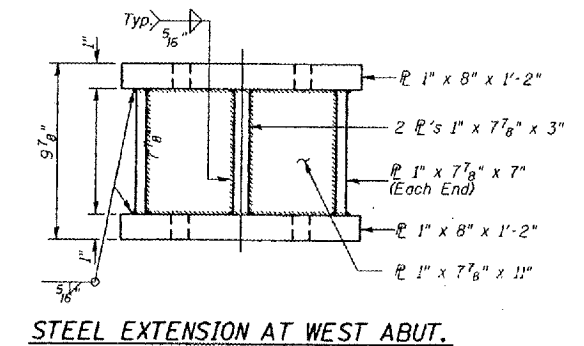


Note: Shim plates shall not be placed under Bearing Assembly.

**GIRDER REACTIONS**

R <sub>l</sub>	(K)	24.00
R <sub>r</sub>	(K)	37.7
Imp.	(K)	11.31
R (Total)	(K)	73.01

**EXISTING BEARING REMOVAL DETAIL**  
 Cost shall be included in the cost of Jack & Remove Existing Bearing.



Equivalent rolled angle with stiffeners will be allowed in lieu of welded plates. Weight included with Furnishing and Erecting Structural Steel.

Notes:

Prior to ordering any material, the Contractor shall verify in the field all bearing height and shim thickness dimensions. The minimum jack capacity required is 37 Tons. New steel extensions, side retainers, connection bolts, any shim and anchor bolts are included in "Furnishing and Erecting Structural Steel". Hatched areas indicate Jack and Remove Existing Bearings. Existing diaphragm removal and new diaphragm erection shall be coordinated with drilling holes in bottom flange for bearing attachment, if necessary, to provide clearance for the drill.

**BILL OF MATERIAL**

Item	Unit	Total
Elastomeric Bearing Assembly Type I	Each	6
Jack and Remove Existing Bearings	Each	6

DESIGNED:	CMW
CHECKED:	TWH
DRAWN:	CMW
CHECKED:	TWH

**WEST ABUTMENT**

FOR INFORMATION ONLY:  
 BRIDGE NO. 4 STRUCTURE 064-0021