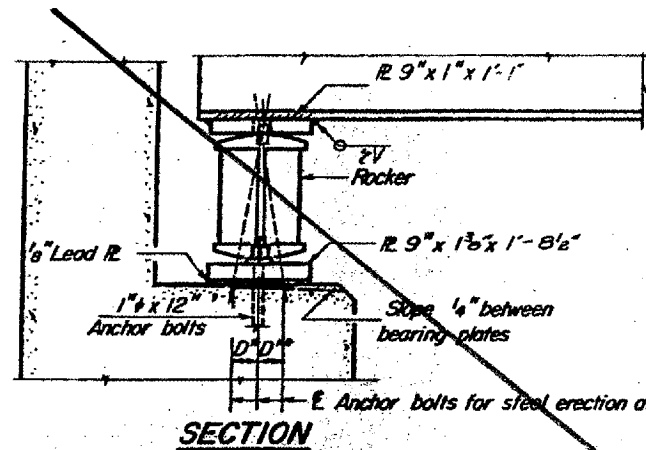


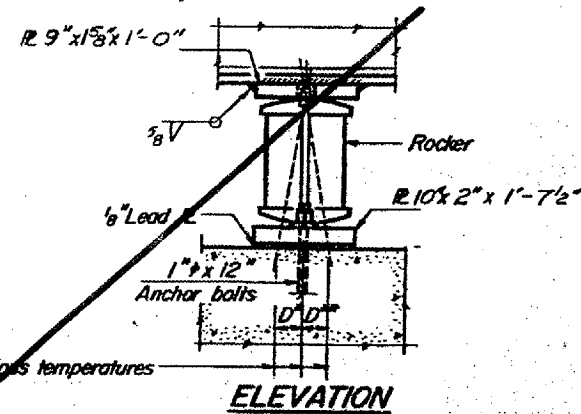
STATE OF ILLINOIS
 DEPARTMENT OF PUBLIC WORKS & BUILDINGS
 DIVISION OF HIGHWAYS

| | | | | |
|-----|-------------|----------|------|--------|
| NO. | DESCRIPTION | QUANTITY | UNIT | AMOUNT |
| 29 | 218 | MASSAC | 79 | 27 |

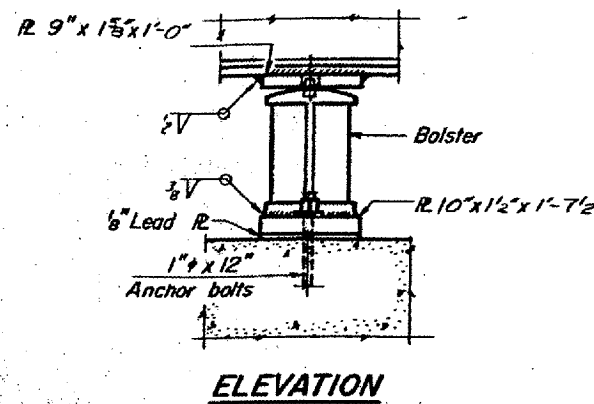
SHEET NO. 5
 11 SHEETS



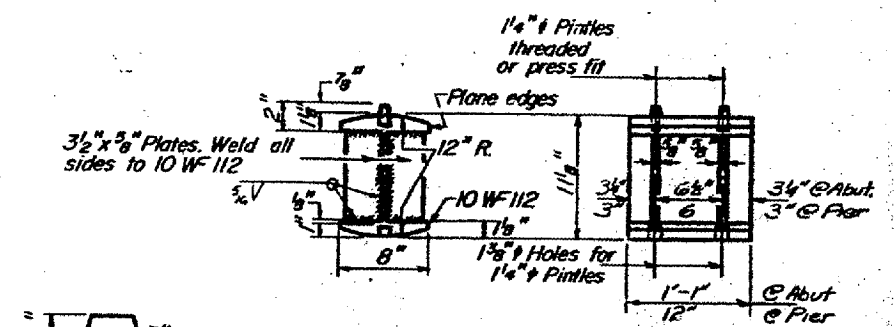
SECTION



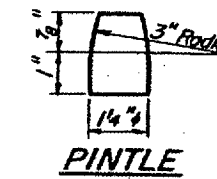
ELEVATION



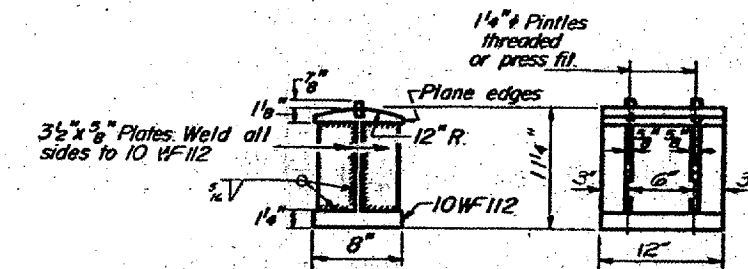
ELEVATION



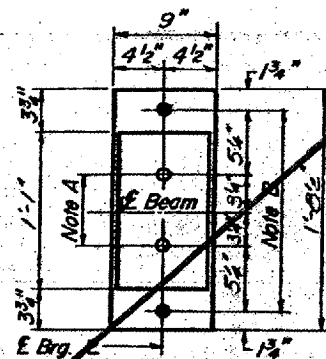
ROCKER



PINTLE



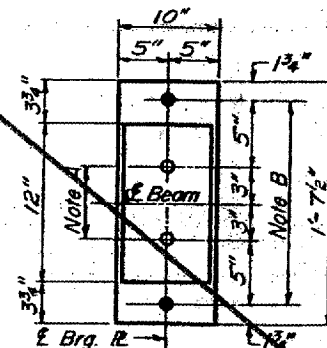
BOLSTER



PLAN

AT ABUTMENT

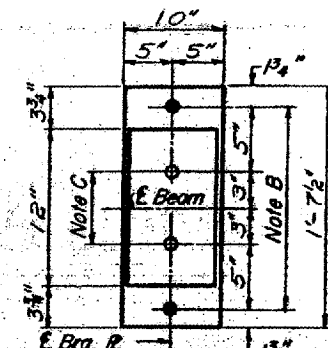
NOTE A
 1 3/8" Holes - 1" deep in top R.
 for pintles. Thread or press fit
 pintles into bottom R.



PLAN

AT PIER 2

NOTE B
 1 1/2" Holes for 1" anchor bolts.
 2 1/2" x 3/4" x 5/16" R. Washers
 under nut.



PLAN

AT PIER 1

NOTE C
 1 3/8" Holes 1" deep in top R.
 only for 1/4" pintles.

BEARING ASSEMBLY DETAILS

NOTES ON SETTING OF ANCHOR BOLTS AT EXP. BRGS.

- D^* (Side of brg. away from fixed brg.)
 $D^* = \frac{1}{8}$ " per each 100' of expansion for
 every 15° fall below the normal temp.
 of 50°F.

D^{**} (Side of brg. toward fixed brg.)
 $D^{**} = \frac{1}{8}$ " per each 100' of expansion for
 every 15° rise above the normal temp.
 of 50°F.
- After beams have been erected and dimensions D^* or D^{**}
 determined, holes shall be drilled and anchor bolts shall
 be grouted in place. All fixed anchor bolts may be built
 into the masonry.

| | |
|-----------------------|----------|
| DESIGNED Sam Malouf | EXAMINED |
| CHECKED H. G. Barnett | PASSED |
| DRAWN P. G. Barnett | APPROVED |
| CHECKED | |

| |
|----------------|
| SEPT 30 1968 |
| C. J. Thompson |
| |
| |

FOR INFORMATION ONLY:
 BRIDGE NO. 4 STRUCTURE 064-0021