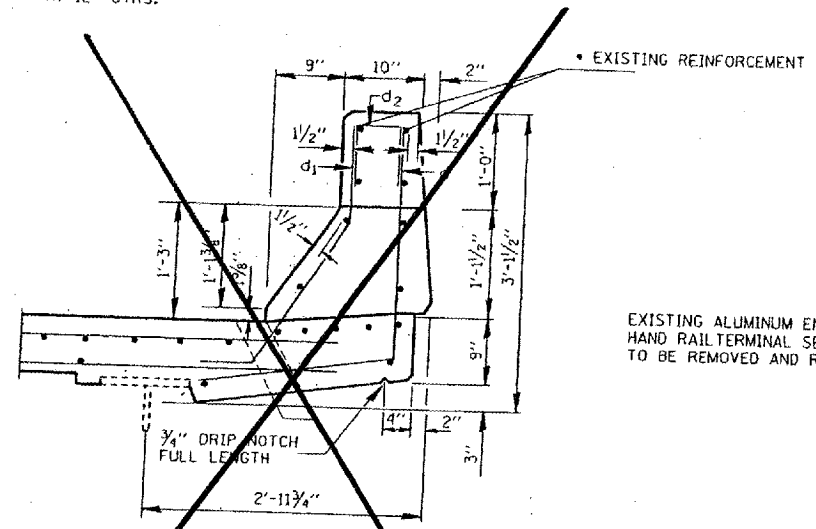
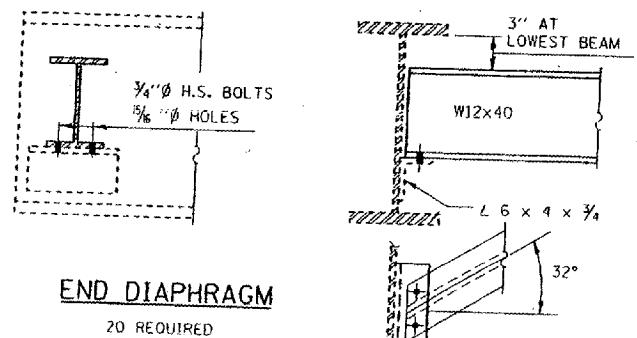


NOTE:  $d_2$  and  $d_1$  (E) BARS SPACED AT 12" CTRS.



SECTION THRU PARAPET

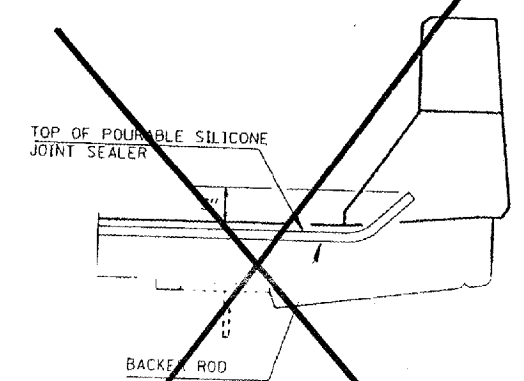
\* EXISTING REINFORCEMENT EXTENDING INTO REMOVAL AREA SHALL BE CLEANED, STRAIGHTENED AND INCORPORATED INTO THE NEW CONSTRUCTION. COST INCLUDED IN CONCRETE REMOVAL.



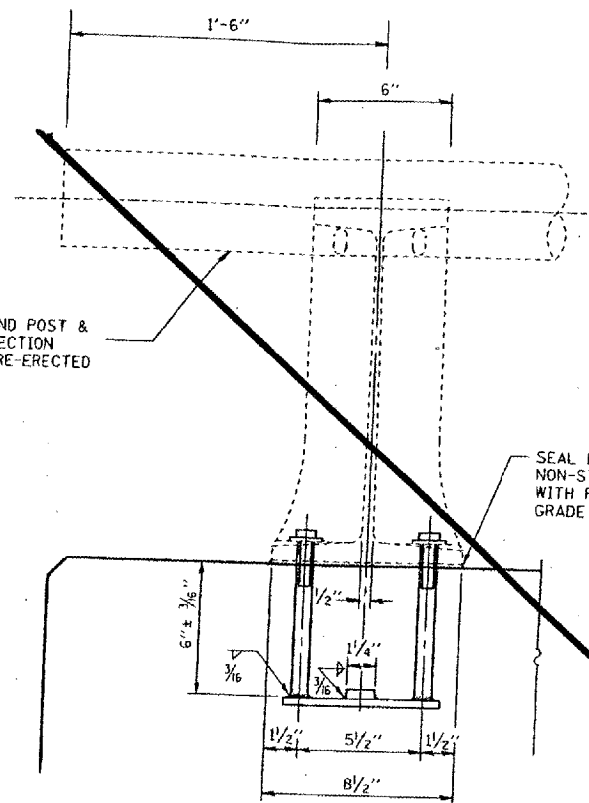
END DIAPHRAGM

20 REQUIRED

NOTE: TWO HARDENED WASHERS SHALL BE REQUIRED OVER ALL OVERSIZE HOLES FOR DIAPHRAGMS.

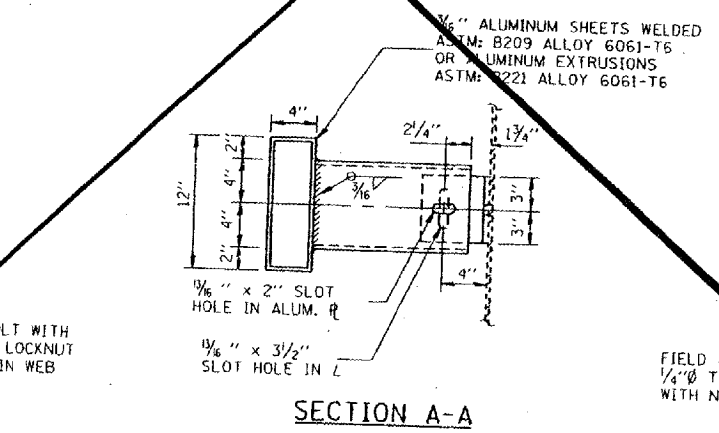


SILICONE SEAL AT PARAPET

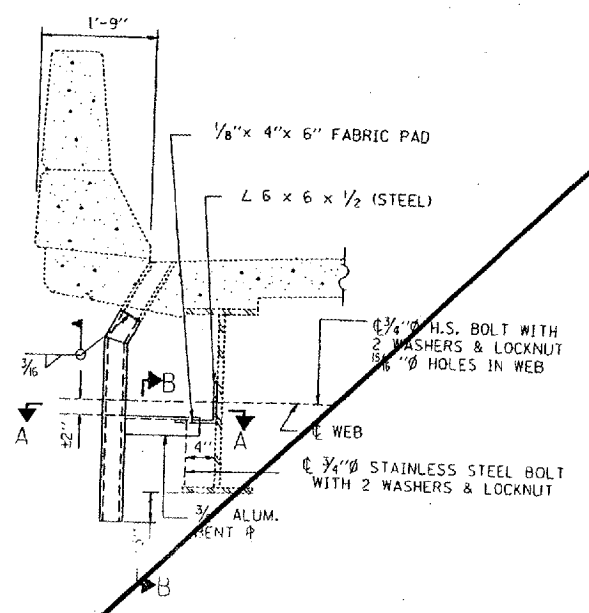


RAIL POST DETAILS

NOTE: RAIL SHALL BE REMOVED AND RE-ERECTED AS NECESSARY TO ALLOW JOINT REPAIR. COST INCLUDED IN CONCRETE REMOVAL.

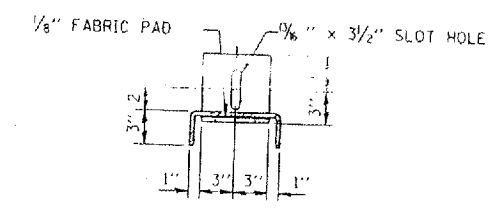


SECTION A-A

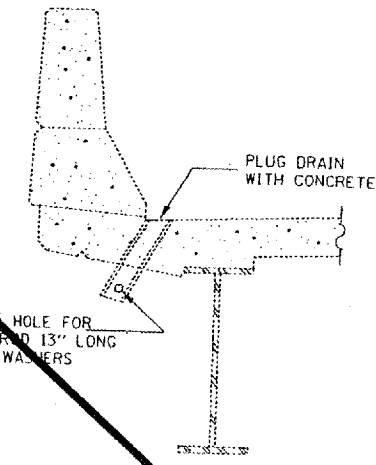


SECTION AT DRAIN

(68 LOCATIONS)



SECTION B-B



SECTION AT DRAIN  
 DRAIN ELIMINATION DETAIL

( 28 LOCATIONS )

DESIGNED	J.C.P.
CHECKED	
DRAWN	T. F.
CHECKED	



FOR INFORMATION ONLY:  
 BRIDGE NO. 5 STRUCTURE 064-0023  
 BRIDGE NO. 6 STRUCTURE 064-0024

Mon Jul 16 16:57:21 2001  
 c:\projects\amar\064-0023\... \up\0123\_24.dgn LV51-63