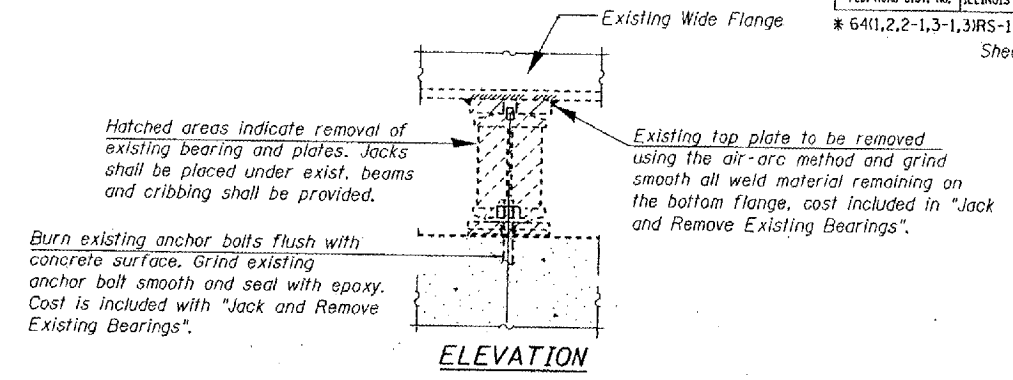
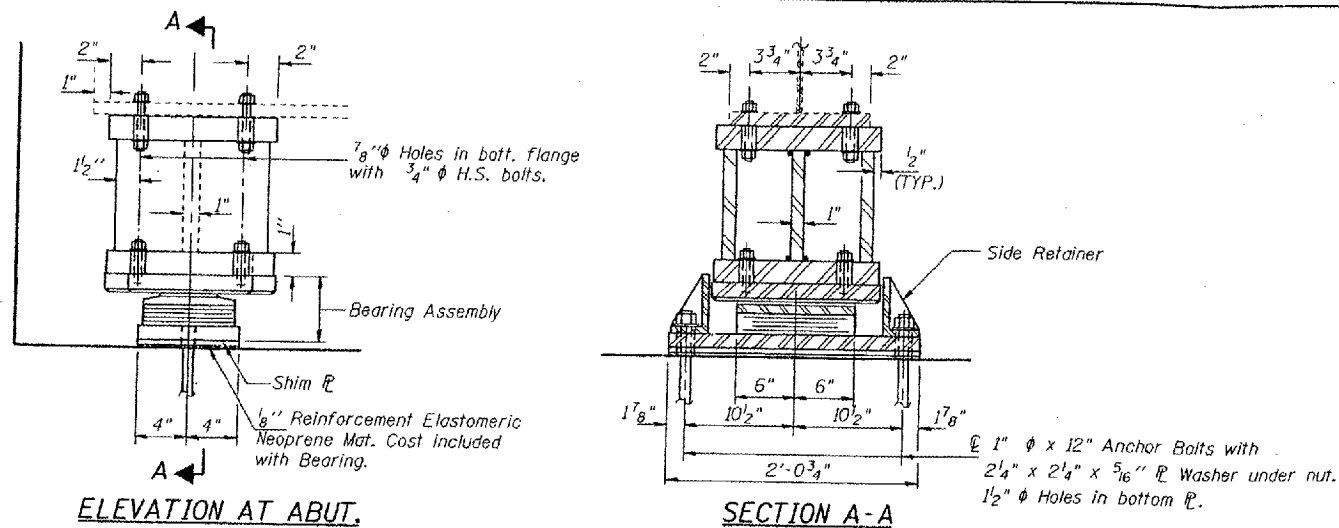
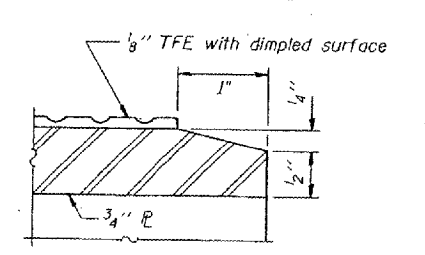
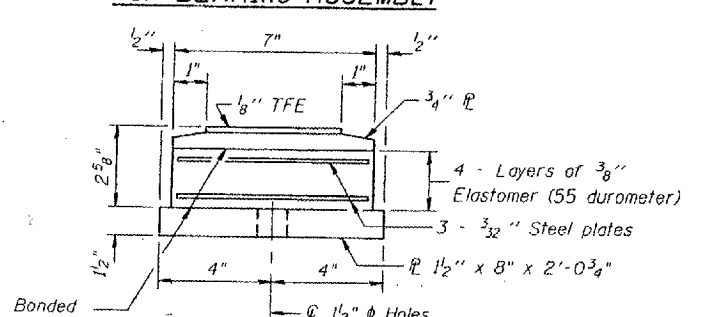
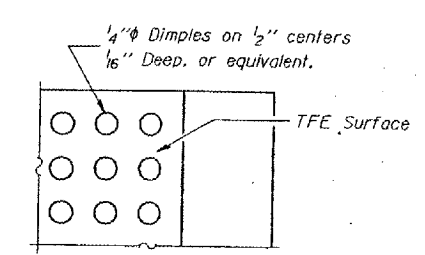
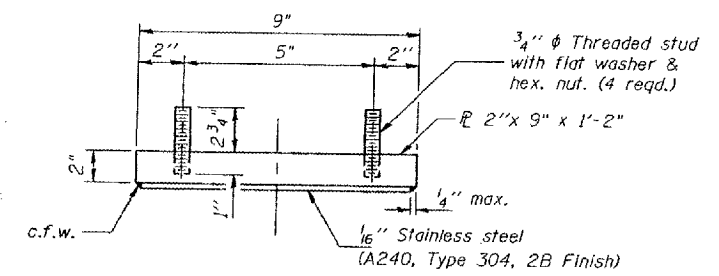


FED. ROAD DIST. NO. ILLINOIS FED. AID PROJECT
 * 64(1,2,2-1,3-1,3)RS-1. BSMART FY2002-2
 Sheet 7 of 11 sheets



TYPE II ELASTOMERIC EXP. BRG.

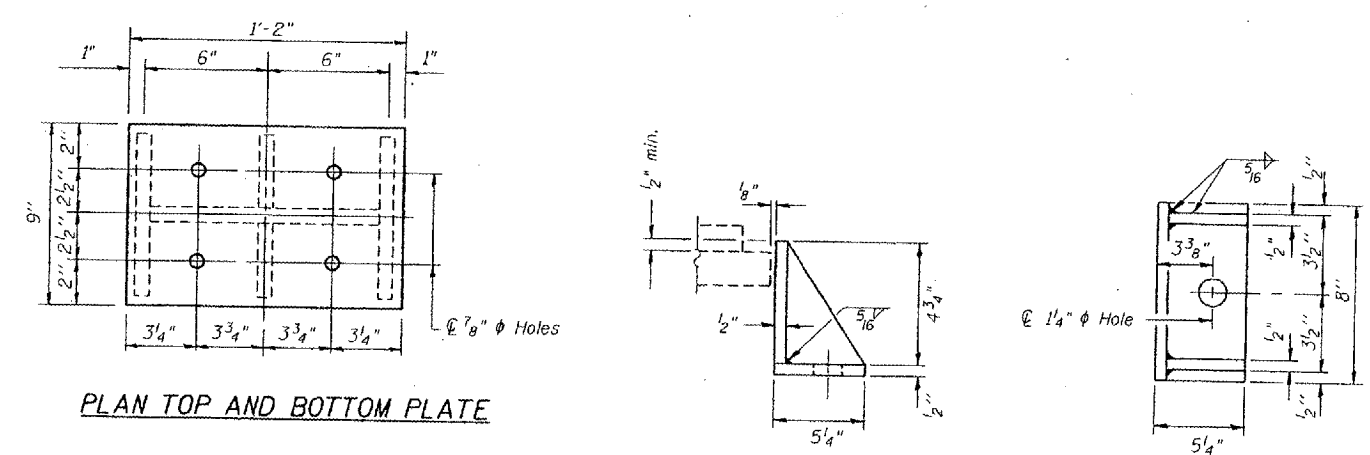


***INTERIOR BEAM REACTION TABLE**

	SERVICE LOADS
R _D (K)	25.4
R _L (K)	35.9
Imp (K)	10.5
R Total (K)	71.8

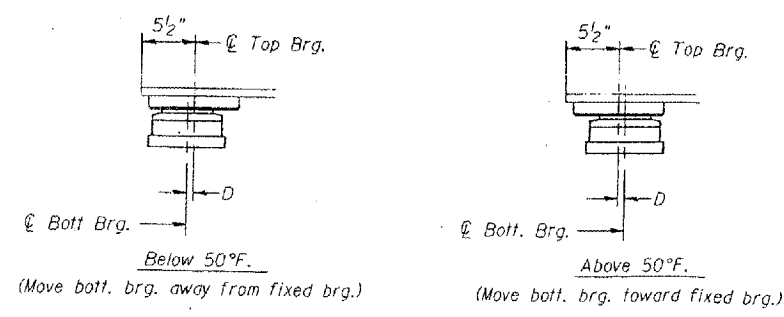
* Min. Jack capacity at each Beam shall be 37 Tons.

Notes:
 Prior to ordering any material, the contractor shall verify in the field all bearing height dimensions and shim thickness dimensions.
 For anchor bolt installation details see sheet # 8 of 11.
 New steel extensions, side retainers, connection bolts, anchor bolts, and shim plates are included in "Furnishing and Erecting Structural Steel".



NOTE: The 1/8" TFE sheet shall be bonded directly to the top steel plate with a two-component, medium viscosity epoxy resin, conforming to the requirements of the Federal Specification MMM-A-134, Type I the bond agent shall be applied on the full area of the contact surfaces.

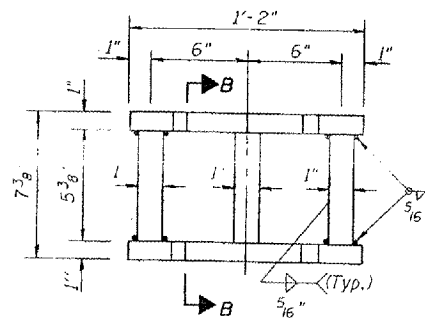
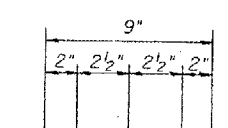
Bonding of 1/8" TFE sheet during vulcanizing process will be permitted provided the process and method of adjusting assembly height is approved by the Engineer.



SETTING ANCHOR BOLTS AT EXP. BRG.

D = 1/8" per each 100' of expansion for every 15° temp. Change from the normal temp. of 50°F.

PLAN TOP AND BOTTOM PLATE



SIDE RETAINER

Equivalent rolled angle with stiffeners will be allowed in lieu of welded plates. Weight included with structural steel.

BILL OF MATERIAL

ITEM	UNIT	TOTAL
ELASTOMERIC BEARING ASSEMBLY TYPE II	EACH	12

FOR INFORMATION ONLY:

ELASTOMERIC B BRIDGE NO. 5 STRUCTURE 064-0023
 BRIDGE NO. 6 STRUCTURE 064-0024



Tue Jul 17 08:36:23 2001
 c:\projects\smart\064-0023\brg-y2\brg-y2.dwg LV:1-63

DESIGNED	J.C.P.
CHECKED	
DRAWN	T. F.
CHECKED	