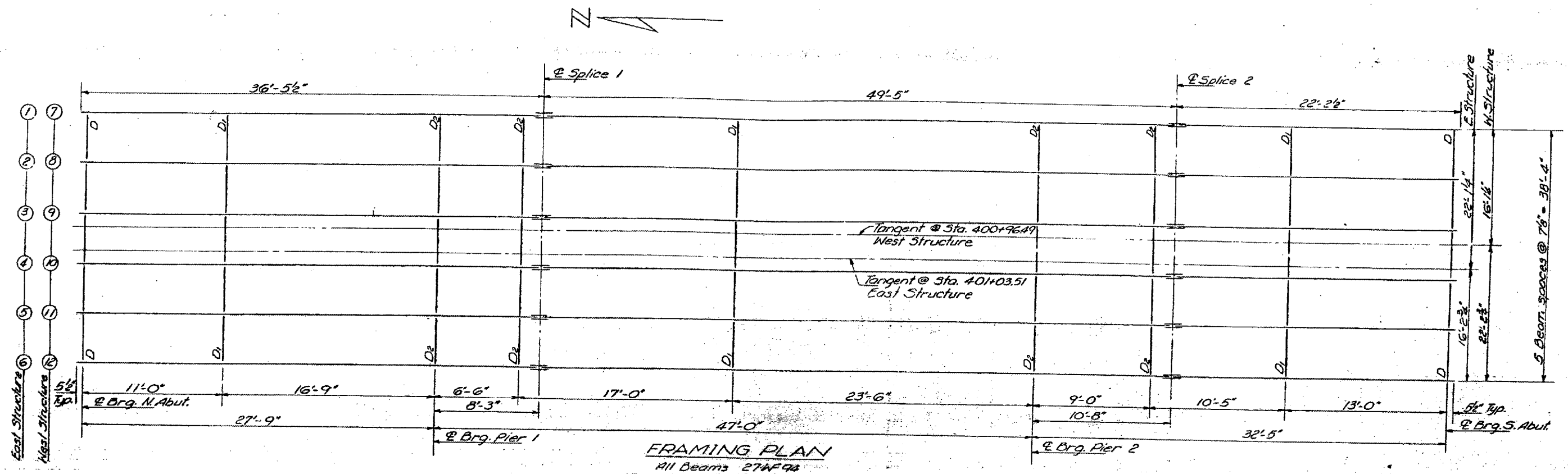


STATE OF ILLINOIS
 DEPARTMENT OF PUBLIC WORKS & BUILDINGS
 DIVISION OF HIGHWAYS

SHEET NO.: 40 OF 58

ROUTE NO.	SECTION	MASSAC	44	23	19 SHEETS
21	2				



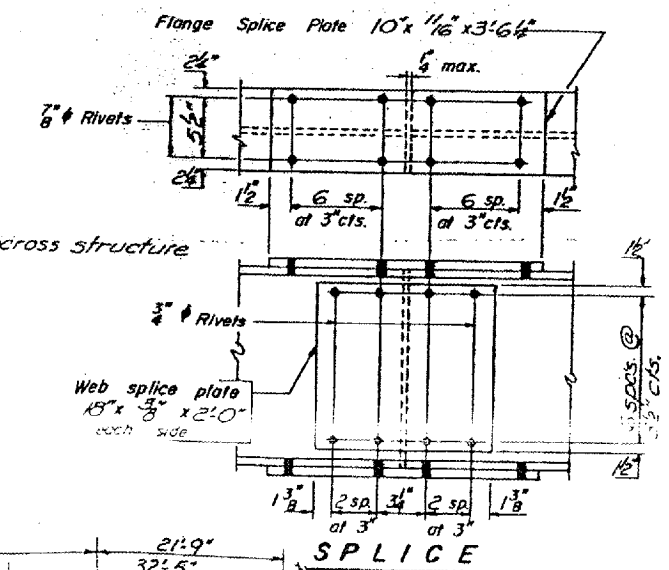
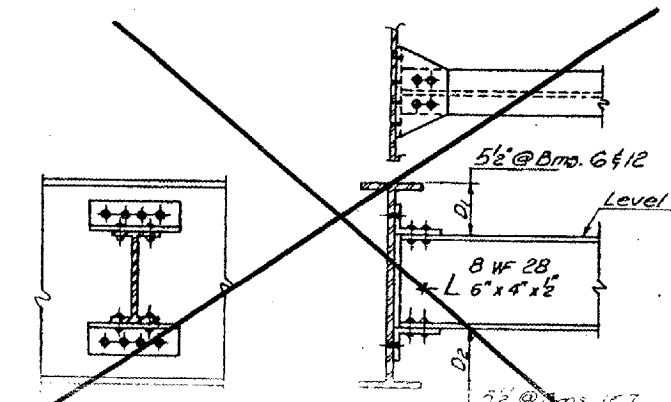
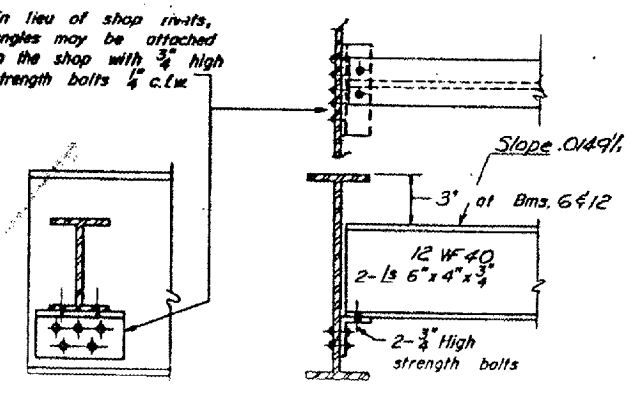
TOP OF BEAM ELEVATIONS
 (For Fabrication only)
 East Structure

Beam No.	1	2	3	4	5	6
E. Brg. N. Abut.	358.94	358.83	358.72	358.60	358.48	358.37
E. Brg. Pier 1	359.37	359.26	359.15	359.03	358.91	358.80
E. Splice 1	359.50	359.39	359.28	359.16	359.04	358.93
E. Brg. Pier 2	360.16	360.05	359.94	359.82	359.70	359.59
E. Splice 2	360.34	360.23	360.12	360.00	359.88	359.77
E. Brg. S. Abut.	360.76	360.65	360.54	360.42	360.30	360.19

West Structure

Beam No.	7	8	9	10	11	12
E. Brg. N. Abut.	358.89	358.77	358.66	358.54	358.43	358.31
E. Brg. Pier 1	359.32	359.20	359.09	358.97	358.86	358.74
E. Splice 1	359.45	359.33	359.22	359.10	358.99	358.87
E. Brg. Pier 2	360.04	359.92	359.80	359.68	359.57	359.45
E. Splice 2	360.21	360.10	360.00	359.88	359.77	359.65
E. Brg. S. Abut.	360.68	360.56	360.44	360.33	360.22	360.10

In lieu of shop rivets, angles may be attached in the shop with 3/4" high strength bolts 1/4" c.c.w.



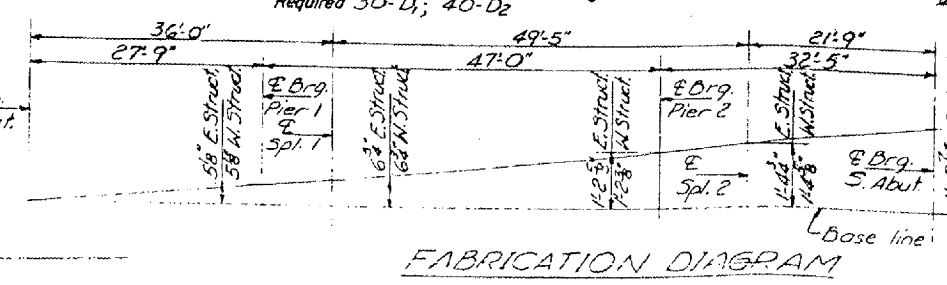
Note: See Sheet # 12 for Bearing Details & Shear Stud Spacing.

Diaphragm connections may be adapted to shop welding subject to approval by the Engineer.

DESIGNED: James M. Baker
 CHECKED: Tom Chilton
 DRAWN: J. Schneller
 CHECKED: J. G. C.

EXAMINED: [Signature]
 PASSED: [Signature]
 APPROVED: [Signature]

JAN. 22 1969



FOR INFORMATION ONLY:
 BRIDGE NO. 9 STRUCTURE 064-0030
 BRIDGE NO. 10 STRUCTURE 064-0031