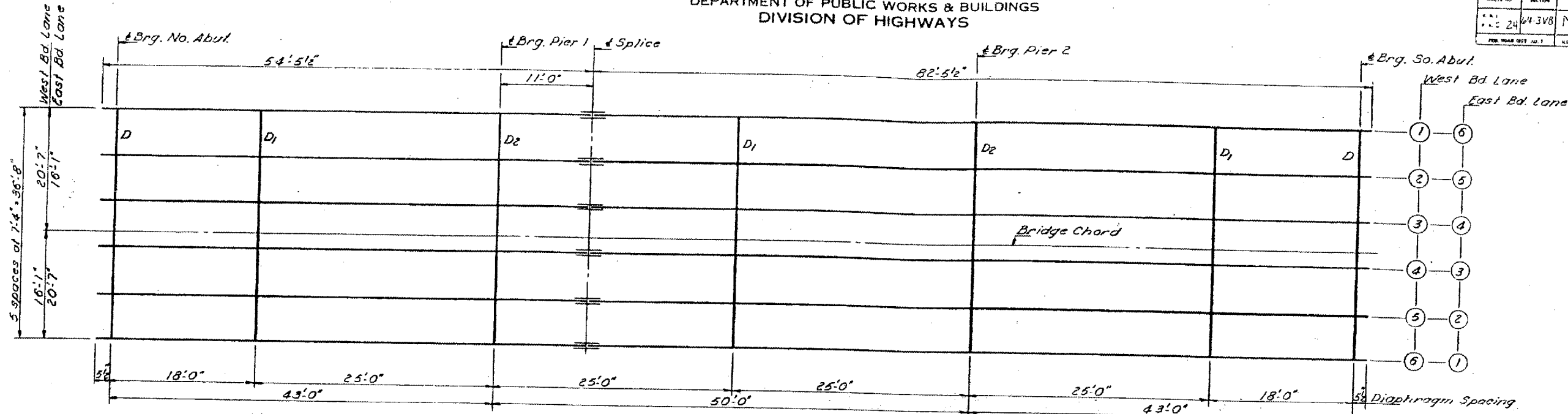
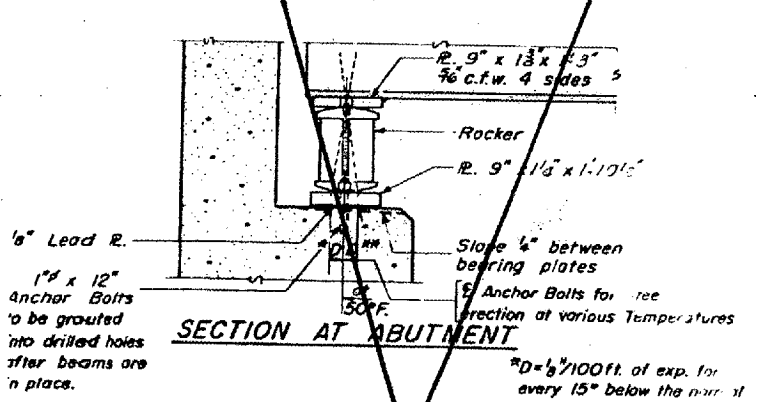


STATE OF ILLINOIS  
 DEPARTMENT OF PUBLIC WORKS & BUILDINGS  
 DIVISION OF HIGHWAYS

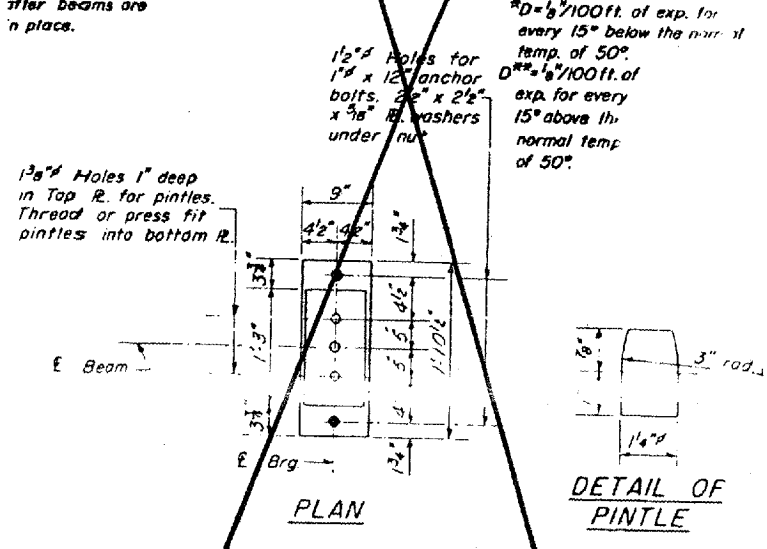
|                   |         |             |          |
|-------------------|---------|-------------|----------|
| ROUTE NO.         | SECTION | SHEET NO.:  | 47 OF 58 |
| 24                | 64-3V8  | 76          | 23       |
| PROJECT: MASSAC   |         | SHEET NO. 1 |          |
| FILE NO. PROJECT: |         | 13 SHEETS   |          |



**PLAN**  
 (All beams are 27WF145)

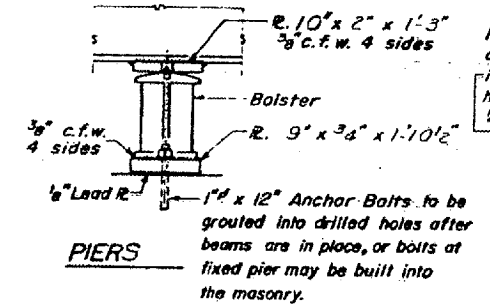


**SECTION AT ABUTMENT**

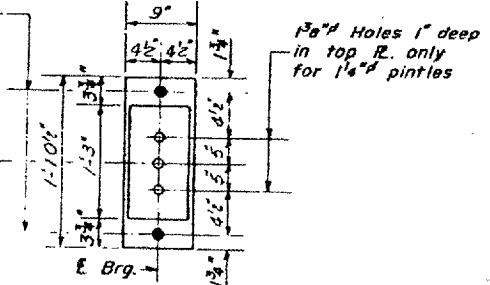


**PLAN**

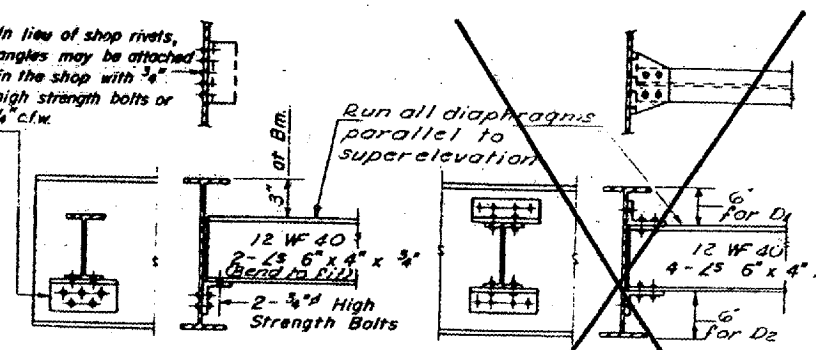
|          |                    |          |             |
|----------|--------------------|----------|-------------|
| DESIGNED | S. Lin             | EXAMINED | Jan 27 1969 |
| CHECKED  | A. H. Hummel       | PASSED   |             |
| DRAWN    | W. A. Sausaman Jr. | APPROVED |             |



**PIERS**

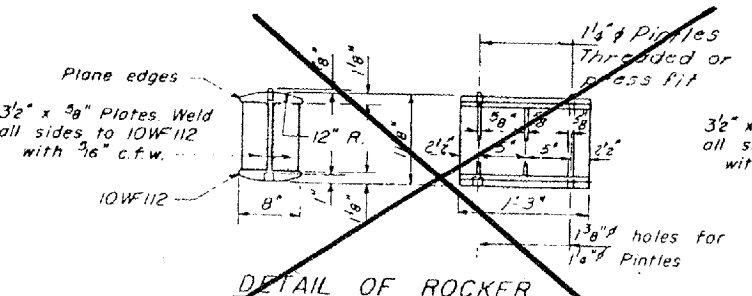


**PLAN**

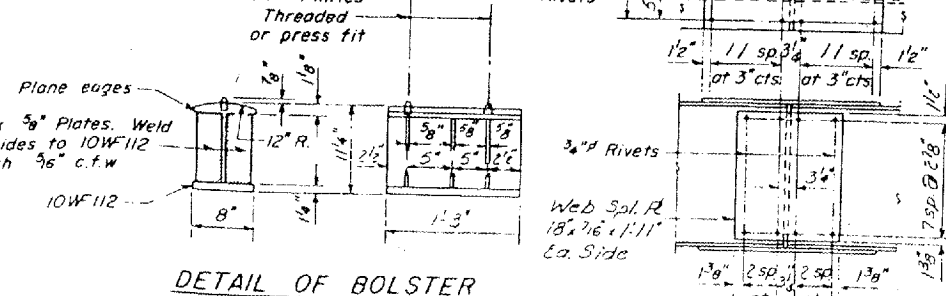


**DIAPHRAGM D**  
 20 Required

**DIAPHRAGM D1 & D2**  
 30 D1 Required  
 20 D2 Required



**DETAIL OF ROCKER AT ABUTMENTS**



**DETAIL OF BOLSTER AT PIERS**

**TABLE OF MOMENTS & REACTIONS - INT. BEAMS**

|       | Moments   |          |         | Reactions |       |
|-------|-----------|----------|---------|-----------|-------|
|       | 4 sp. 1st | Pier 1st | 5 sp. 2 | Abut.     | Piers |
| D.L.  | 167.4     | 270.7    | 121.8   | 20.4      | 64.1  |
| L.L.  | 267.8     | 207.7    | 257.3   | 33.5      | 44.8  |
| Imp.  | 77.7      | 62.3     | 77.2    | 10.3      | 13.0  |
| Total | 512.9     | 540.7    | 456.3   | 66.2      | 121.9 |

Moments are in Ft-Kips  
 Reactions are in Kips

**ELEVATION TOP OF WF**  
 For Fabrication Only

|             | East Bound Lane |        |        |        |        |        |
|-------------|-----------------|--------|--------|--------|--------|--------|
|             | 1               | 2      | 3      | 4      | 5      | 6      |
| 4 Brg. N.A. | 369.84          | 369.94 | 370.06 | 370.17 | 370.28 | 370.39 |
| 4 Brg. P.1  | 369.96          | 370.07 | 370.18 | 370.29 | 370.40 | 370.51 |
| 4 Splice    | 369.99          | 370.10 | 370.21 | 370.32 | 370.43 | 370.54 |
| 4 Brg. P.2  | 370.11          | 370.22 | 370.33 | 370.44 | 370.55 | 370.66 |
| 4 Brg. S.A. | 370.25          | 370.36 | 370.47 | 370.58 | 370.69 | 370.80 |

|             | West Bound Lane |        |        |        |        |        |
|-------------|-----------------|--------|--------|--------|--------|--------|
|             | 1               | 2      | 3      | 4      | 5      | 6      |
| 4 Brg. N.A. | 370.80          | 370.69 | 370.58 | 370.47 | 370.36 | 370.25 |
| 4 Brg. P.1  | 370.92          | 370.81 | 370.70 | 370.59 | 370.48 | 370.37 |
| 4 Splice    | 370.95          | 370.84 | 370.73 | 370.62 | 370.51 | 370.40 |
| 4 Brg. P.2  | 371.07          | 370.96 | 370.85 | 370.74 | 370.63 | 370.52 |
| 4 Brg. S.A. | 371.21          | 371.10 | 370.99 | 370.88 | 370.77 | 370.66 |

FOR INFORMATION ONLY:

BRIDGE NO. 11 STRUCTURE 064-0032

BRIDGE NO. 11 STRUCTURE 064-0032