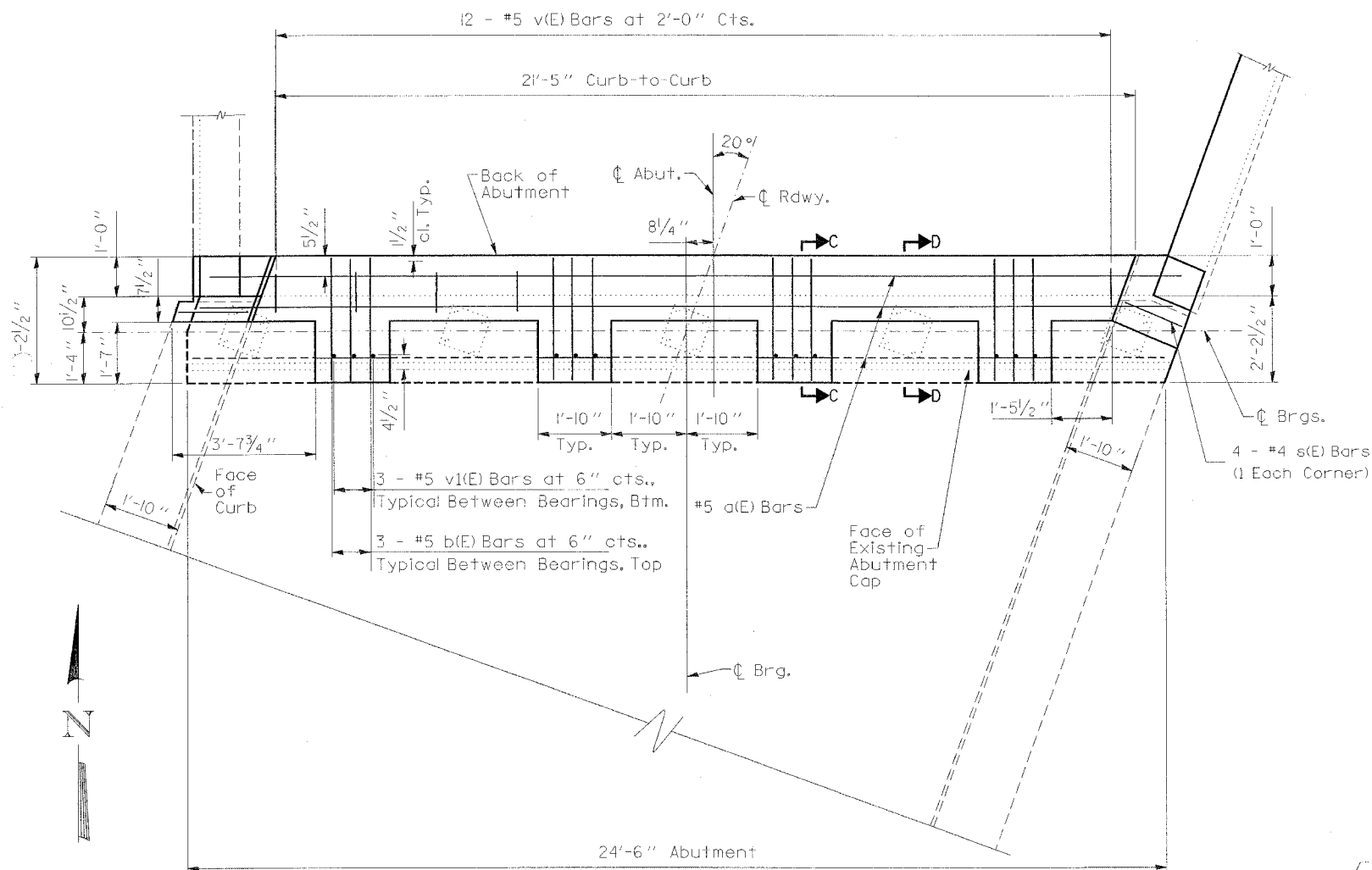


STATE OF ILLINOIS
DEPARTMENT OF TRANSPORTATION

ROUTE NO.	SECTION	COUNTY	DATE SHEETS	SHEET NO.
F. A. I. 57	*	UNION	15	7
FED. ROAD DIST. NO. 7	ILLINOIS	FED. AID PROJECT		
* D-9 CONT MAINT FY 05-9 CONTRACT NO. 98900				



CONCRETE SUPERSTRUCTURE

NOTES:

See Sections C-C and D-D on Sheet 8 of 15.
See Sections CC-CC and DD-DD on Sheet 9 of 15.

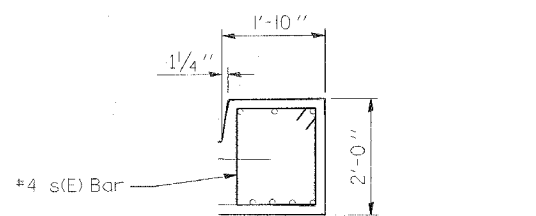
CONCRETE SUPERSTRUCTURE PLAN
NORTH ABUTMENT

091-0020

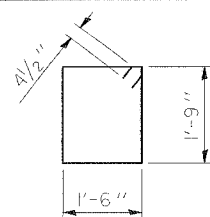
BILL OF MATERIAL

Bar	No.	Size	Length	Shape
a(E)	5	#5	24'-1"	—
a1(E)	5	#5	24'-3"	—
b(E)	24	#5	3'-7"	—
s(E)	4	#4	7'-3"	□
v(E)	12	#5	3'-1"	—
v1(E)	12	#5	3'-0"	—
v2(E)	12	#5	3'-10"	—
v3(E)	12	#5	4'-3"	—
Concrete Removal		Cu. Yd.		6.5
Concrete Superstructure		Cu. Yd.		9.9
Reinforcement Bars, Epoxy Coated		Lbs.		540

Reinforcement bars designated (E) shall be epoxy coated.

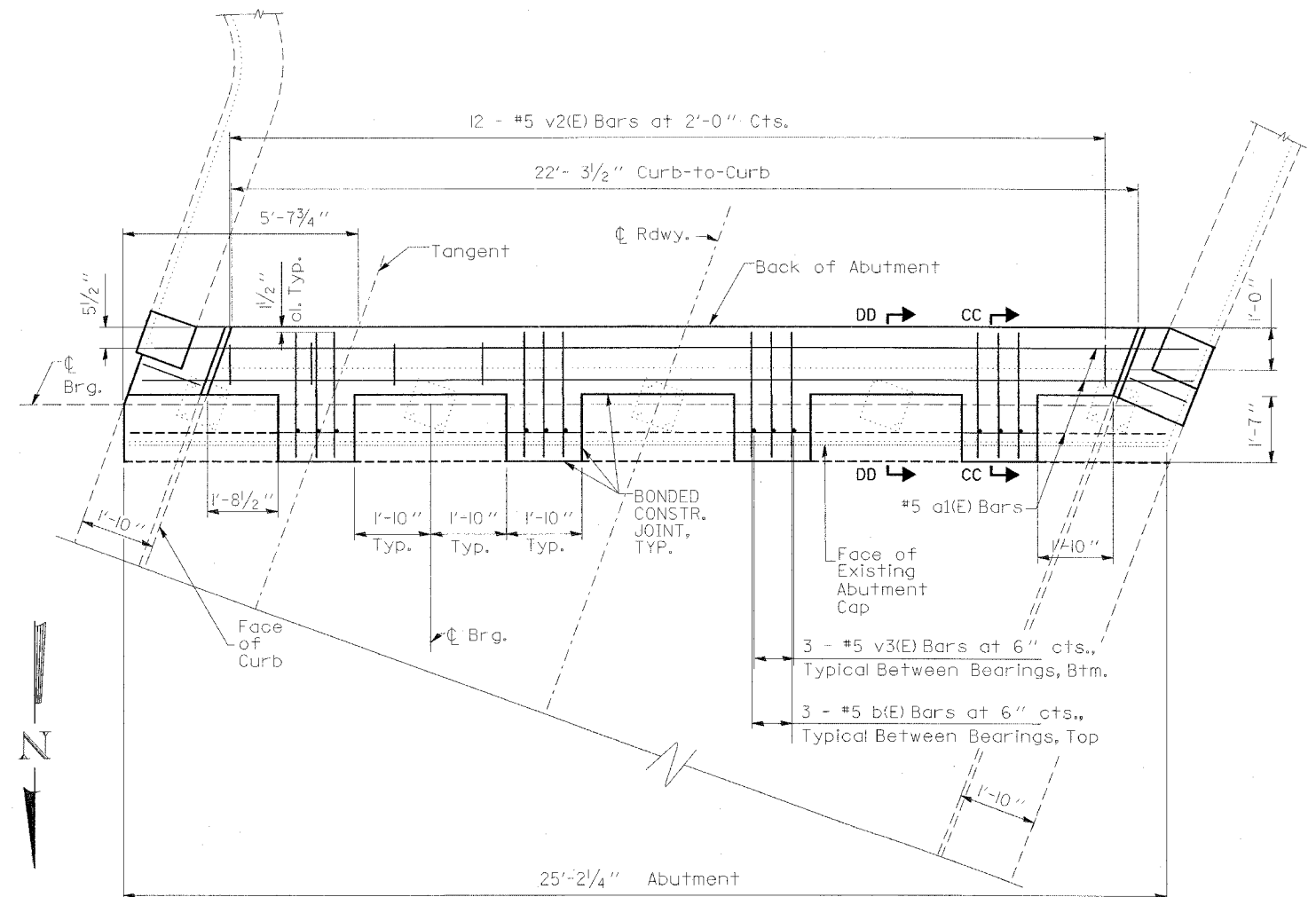


SECTION THRU CURB



S(E) BAR

DESIGNED	RKG
CHECKED	CNT
DRAWN	RKG
CHECKED	CNT



CONCRETE SUPERSTRUCTURE PLAN
SOUTH ABUTMENT

CONCRETE SUPERSTRUCTURE PLAN
ROUTE I-57 AT DONGOLA INTERCHANGE
OFF RAMP "B" 233 OVER STREAM
STRUCTURE 091-0020
UNION COUNTY