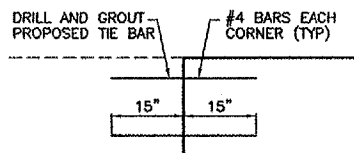
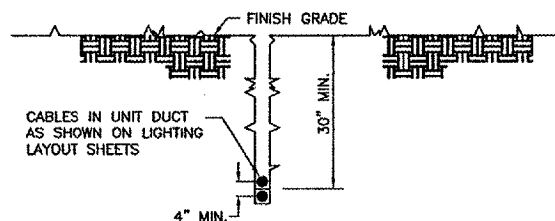


CONCRETE ENCASED DUCT END DETAIL
 NO SCALE



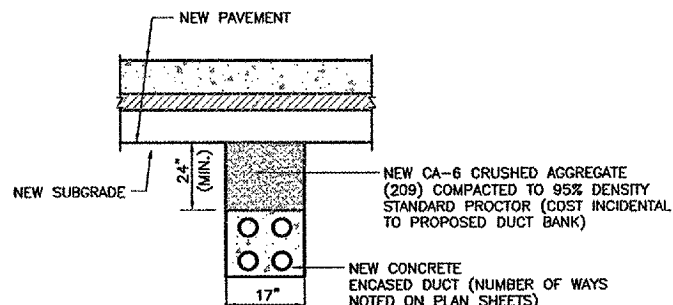
EXTENSION OF EXISTING DUCT
 NO SCALE

NOTE: COST OF CONNECTION SHALL BE CONSIDERED INCIDENTAL TO PROPOSED DUCT.

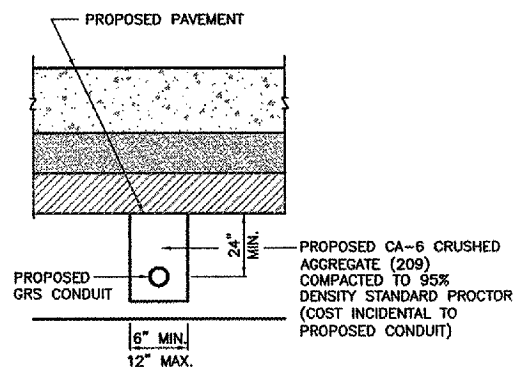


CABLE IN UNIT DUCT - PLOWED
 NOT TO SCALE

CONTRACTOR SHALL HAVE THE OPTION TO TRENCH OR PLOW UNIT DUCT. NO ADDITIONAL PAYMENT SHALL BE MADE FOR TRENCHING.

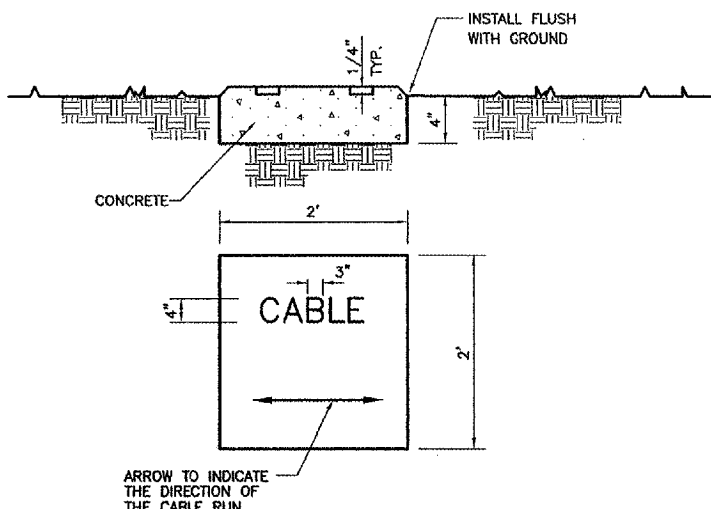


CONCRETE ENCASED DUCT BACKFILL
 NOT TO SCALE



GRS CONDUIT UNDER P.C.C. PAVEMENT DETAIL
 NOT TO SCALE

NEW DUCT BANK/CONDUIT SHALL BE INSTALLED AT AN ELEVATION THAT WILL NOT CONFLICT WITH EXISTING OR NEW UTILITIES INCLUDING STORM SEWER, UNDERDRAIN, CONDUIT, DUCT, GAS, WATERMAIN, PHONE, ELECTRICAL AT NO ADDITIONAL COST TO THE CONTRACT.

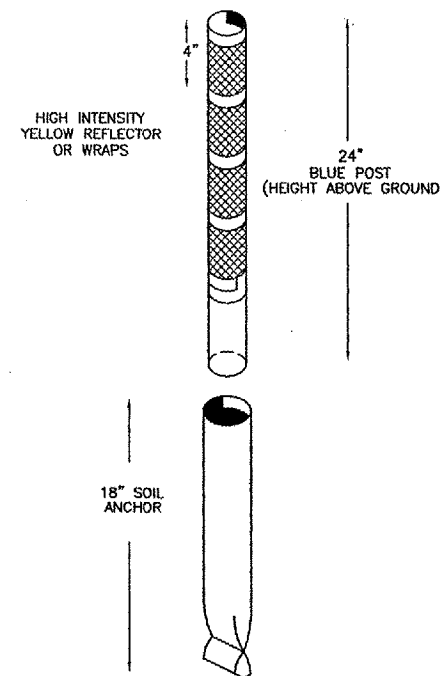


TURF CABLE MARKER DETAIL
 NO SCALE

NOTES

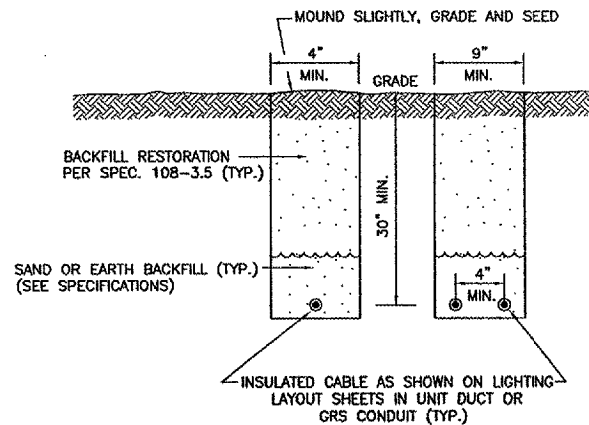
- 1.) CABLE MARKERS SHALL BE INSTALLED AT ALL BENDS AND EVERY 200' ALONG THE CABLE RUN.
- 2.) ITEM 610 CONCRETE SHALL BE USED.
- 3.) ALL EXPOSED EDGES SHALL BE EDGED WITH A 1/4" RADIUS TOOL.
- 4.) THE COST OF FURNISHING AND INSTALLING NEW MARKERS SHALL BE INCIDENTAL TO THE ASSOCIATED CABLE ITEMS.
- 5.) 0.049 CU. YD. CONCRETE PER MARKER.
- 6.) CONTACTOR SHALL LOCATE EXISTING CABLE MARKERS IN THE FIELD BEFORE SHOULDER ADJUSTMENT BEGINS IN ORDER TO REPLACE CABLE MARKERS AT CORRECT LOCATIONS (COST INCIDENTAL TO CONTRACT).

NOTE: AT CONTRACTOR'S OPTION, CABLE PLOWING MAY BE USED IN LIEU OF TRENCHING.



TAXIWAY RETROREFLECTIVE MARKER DETAIL
 NOT TO SCALE

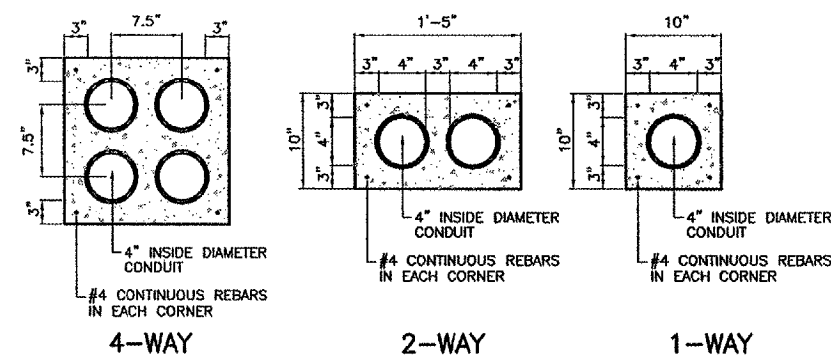
RETROREFLECTIVE MARKER SHALL BE REGINALD BENNETT LT-600 OR APPROVED EQUAL.



TRENCH DETAIL
 NOT TO SCALE

NOTES

1. TRENCHES WITH MORE THAN 2 CABLES SHALL BE INCREASED 3" IN WIDTH FOR EACH ADDITIONAL CABLE. IF SPECIFIED ON PLANS, TWO PARALLEL TRENCHES MAY BE CONSTRUCTED.
2. DEPTH OF TRENCHES SHALL BE AS SHOWN UNLESS OTHERWISE SPECIFIED ON THE PLANS.
3. SAND BACKFILL SHALL BE USED IF THE EXISTING SOIL DOES NOT MEET THE BACKFILL REQUIREMENTS.
4. ALL DISTURBED SURFACES SHALL BE RESTORED TO THEIR ORIGINAL CONDITION. COST IS INCIDENTAL.



CONCRETE ENCASED DUCT BANKS
 NOT TO SCALE

NOTES:

1. DIMENSIONS ARE MINIMUM.
2. CONCRETE SHALL CONFORM TO ITEM 610.
3. ALL CONDUIT SHALL BE SCHEDULE 40 PVC.
4. TOP OF CONCRETE ENCASEMENT IN TURF AREAS SHALL NOT BE LESS THAN 24" BELOW FINISHED GRADE.
5. 4" SPLIT DUCT SHALL BE CONCRETE ENCASED WITH 3" MINIMUM CONCRETE SURROUNDING 4" CONDUIT. COST INCIDENTAL TO SPLIT DUCT.

REVISIONS

NUMBER	BY	DATE

0 1 2
 THIS BAR IS EQUAL TO 2" AT FULL SCALE (34X22).

**AURORA MUNICIPAL AIRPORT
 AURORA, ILLINOIS
 CONSTRUCT NORTHEAST QUADRANT APRON,
 CONNECTING TAXIWAY AND RUNWAY 27 STOPWAY**

ELECTRICAL DETAILS - SHEET 1

© Copyright CMT, Inc.
CMT
 CRAWFORD, MURPHY & TILLY, INC.
 CONSULTING ENGINEERS
 License No. 194-000613

DESIGN BY:	AB
DRAWN BY:	JRO
CHECKED BY:	MJS
APPROVED BY:	DKP
DATE:	01/26/05
JOB No:	04285-03
ILLINOIS PROJECT: ARR-3442 A.I.P. PROJECT: 3-17-0003-B30 FINAL SUBMITTAL	
SHEET 23	OF 39 SHEETS