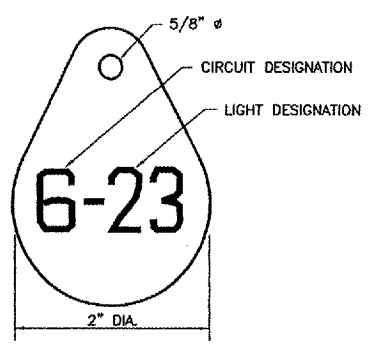


HOLD LINE / TAXIWAY GUIDANCE SIGN L-858, SIZE 2, STYLE 2, CLASS 2
 NOT TO SCALE

SIGNAGE NOTES

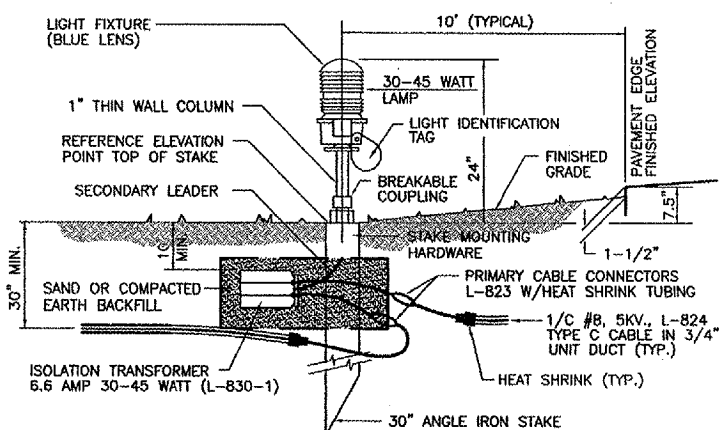
1. ALL SIGNS ARE 2-SIDED SIGNS.
2. TRANSFORMER WATTAGE AS RECOMMENDED BY MANUFACTURER.
3. LIGHTED SIGNS SHALL BE BASE MOUNTED ONLY.
4. UNIT DUCT SHALL BE TERMINATED IN THE CAN AND SEALED TO THE CABLE WITH HEAT SHRINK AS SPECIFIED.
5. THE NUMBER OF MODULES PER SIGN SHALL BE AS RECOMMENDED BY THE MANUFACTURER.
6. CONTRACTOR SHALL SUBMIT DETAILED SHOP DRAWING INCLUDING SIGN, COLOR, SIZE AND PROPOSED LEGEND, IN ENOUGH DETAIL AND DETERMINE PROPOSED SPACING AND OTHER INFORMATION REQUIRED BY SPECIAL PROVISIONS. CONTRACTOR TO VERIFY PROPOSED SIGN LOCATIONS AND ORIENTATIONS WITH RESIDENT ENGINEER PRIOR TO INSTALLATION.



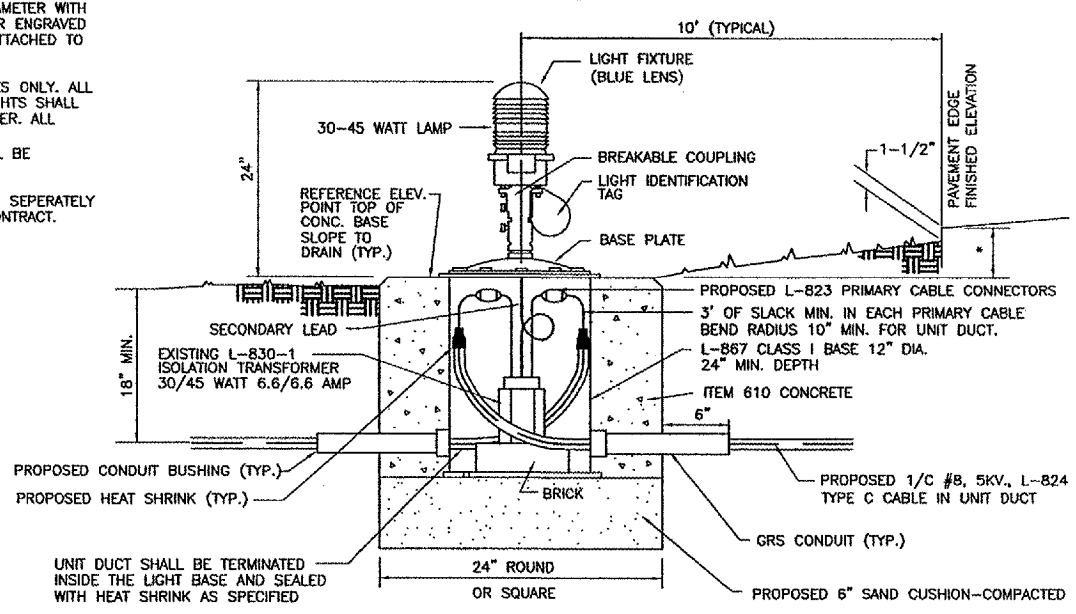
LIGHT IDENTIFICATION DETAIL
 NOT TO SCALE

NOTES:

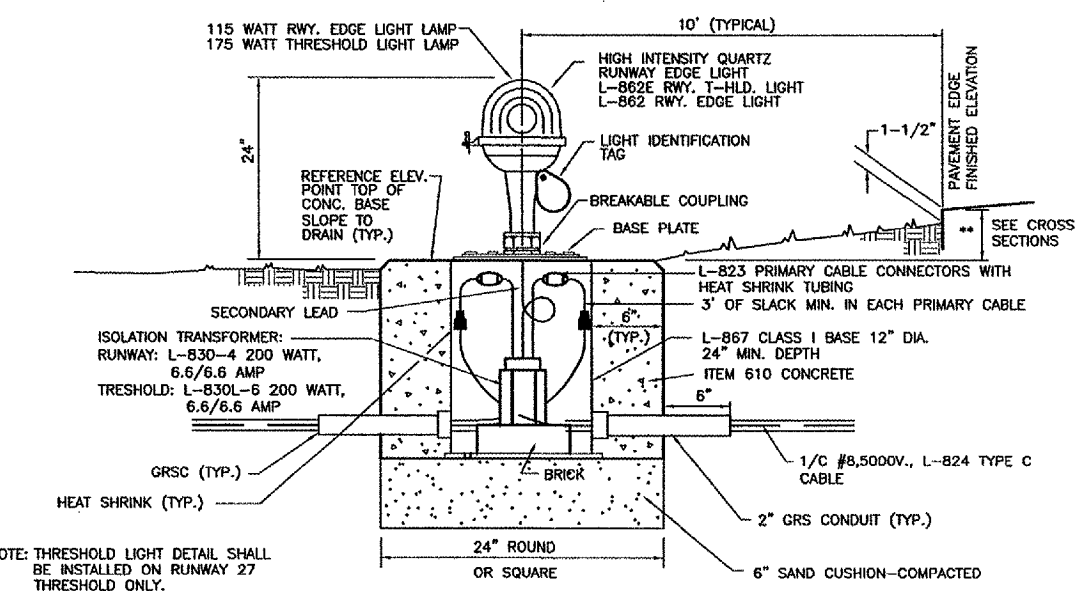
1. INSTALL A NONCORROSIVE DISC OF 2" MINIMUM DIAMETER WITH THE NUMBER PERMANENTLY STAMPED, CUT OUT, OR ENGRAVED UNDER THE HEAD OF THE BASE PLATE BOLT OR ATTACHED TO LIGHT FLANGE WITH A SET SCREW.
2. NUMERALS SHOWN ARE FOR ILLUSTRATIVE PURPOSES ONLY. ALL EXISTING AND PROPOSED TAXIWAY AND RUNWAY LIGHTS SHALL BE TAGGED AS DIRECTED BY THE RESIDENT ENGINEER. ALL LIGHTS ON EXISTING CIRCUITS THAT HAVE LIGHTING IMPROVEMENTS (NEW OR RELOCATED LIGHTS) SHALL BE RETAGGED.
3. COST OF TAGGING LIGHTS SHALL NOT BE PAID FOR SEPERATELY BUT SHALL BE CONSIDERED INCIDENTAL TO THE CONTRACT.



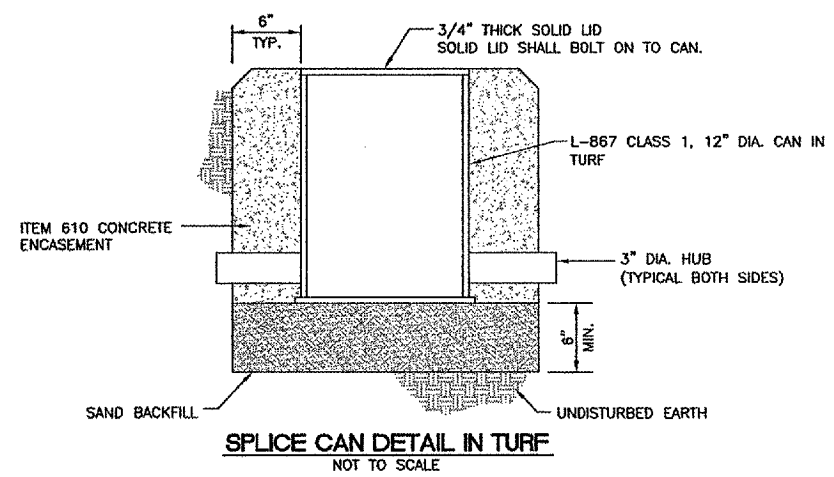
NEW/ADJUSTED/RELOCATED STAKE MOUNTED MEDIUM INTENSITY TAXIWAY LIGHT
 NOT TO SCALE



NEW/ADJUSTED/RELOCATED BASE MOUNTED MEDIUM INTENSITY TAXIWAY LIGHT
 NOT TO SCALE



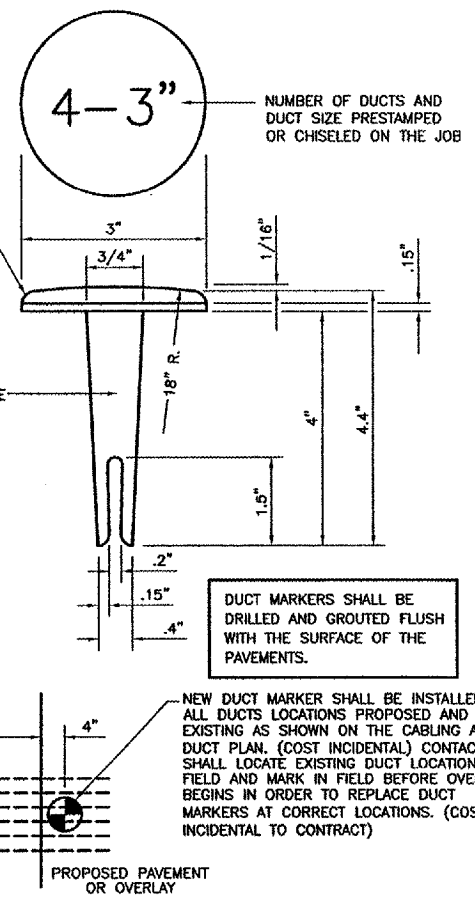
NEW/ADJUSTED/RELOCATED BASE MOUNTED HIGH INTENSITY RUNWAY/THRESHOLD LIGHT
 NOT TO SCALE



SPLICE CAN DETAIL IN TURF
 NOT TO SCALE

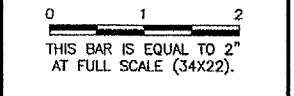
GENERAL NOTES:

1. THE CONCRETE BASE FOR BASE MTD. LIGHTS SHALL BE TROWEL FINISHED WITH A 45° BEVELED EDGE. SLOPE TO DRAIN (610).
2. TRANSFORMER HOLDER SHALL BE ANY COMMERCIALY AVAILABLE BRICK.
3. BREAKING GROOVE COUPLINGS SHALL NOT BE OVER 1" ABOVE GROUND LINE.
4. ISOLATION TRANSFORMERS COME WITH A FACTORY INSTALLED PLUG (TYPE 1, CLASS A, STYLE 2) AND RECEPTACLE (TYPE 1, CLASS A, STYLE 9). A TYPE 1, CLASS B, STYLE 3 PLUG AND TYPE 1, CLASS B, STYLE 10 RECEPTACLE SHALL BE INSTALLED ON THE 1/C, No. 8, 5000 V., L-824 TYPE C CABLES FOR CONNECTION TO EACH TRANSFORMER.
5. TO FURTHER REDUCE THE POSSIBILITY OF WATER/MOISTURE ENTRANCE INTO THE CONNECTOR BETWEEN THE CABLE AND THE FIELD ATTACHED CONNECTOR, IT IS REQUIRED THAT A HEAT SHRINKABLE TUBING WITH INTERNAL ADHESIVE BE APPLIED OVER THE ENTIRE CABLE CONNECTOR.
6. ALL SIGNS, LIGHTS, CABLES AND TRANSFORMERS TO BE REMOVED SHALL REMAIN THE PROPERTY OF THE AIRPORT. AT THE DISCRETION OF THE AIRPORT DIRECTOR, THE CONTRACTOR MAY BE REQUIRED TO DISPOSE OF THESE MATERIALS OFFSITE AT NO ADDITIONAL COST.
7. TAXIWAY LIGHTS SHALL HAVE A BLUE LENS, RUNWAY LIGHTS SHALL HAVE A CLEAR OR 180° AMBER/CLEAR LENS AS DESIGNATED ON PLANS.
8. DUCT MARKERS SHALL BE INSTALLED AT EVERY NEW DUCT AND AT EVERY EXISTING DUCT USED FOR THIS PROJECT.
9. CONTRACTOR SHALL HAVE THE OPTION TO TRENCH OR PLOW UNIT DUCT. NO ADDITIONAL PAYMENT SHALL BE MADE FOR TRENCHING.



DUCT/CONDUIT MARKER DETAIL
 NOT TO SCALE

REVISIONS		
NUMBER	BY	DATE



**AURORA MUNICIPAL AIRPORT
 AURORA, ILLINOIS
 CONSTRUCT NORTHWEST QUADRANT APRON,
 CONNECTING TAXIWAY AND RUNWAY 27 STOPWAY**

ELECTRICAL DETAILS - SHEET 2

© Copyright CMT, Inc.
CMT
 CRAWFORD, MURPHY & TILLY, INC.
 CONSULTING ENGINEERS
 License No. 184-000619

DESIGN BY:	AB
DRAWN BY:	JRO
CHECKED BY:	MJS
APPROVED BY:	DKP
DATE:	01/26/05
JOB No:	04285-03
ILLINOIS PROJECT:	ARR-3442
A.I.P. PROJECT:	3-17-0003-B30
FINAL SUBMITTAL	
SHEET 24 OF 39 SHEETS	