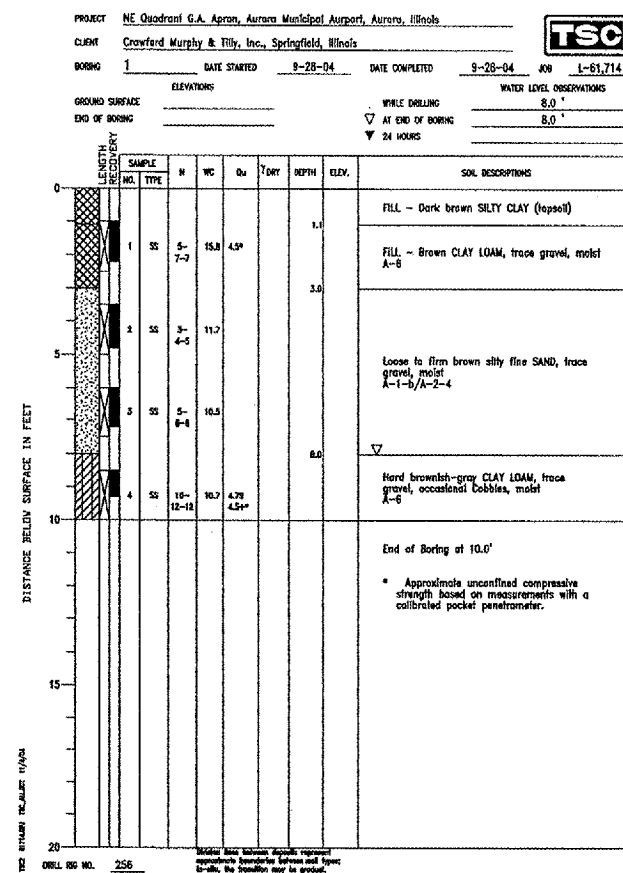


LEGEND

PROPOSED IMPROVEMENTS
 PROPOSED BORING AND NUMBER

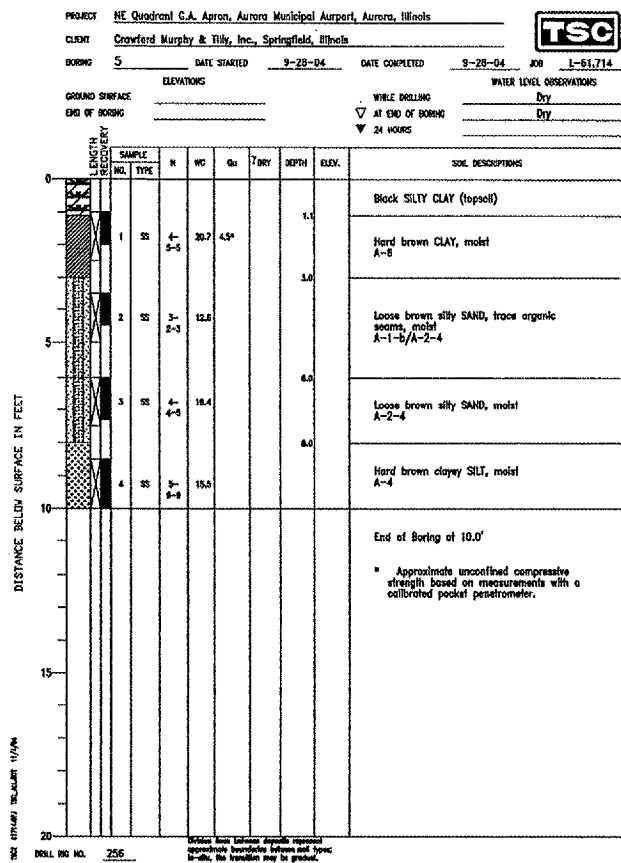
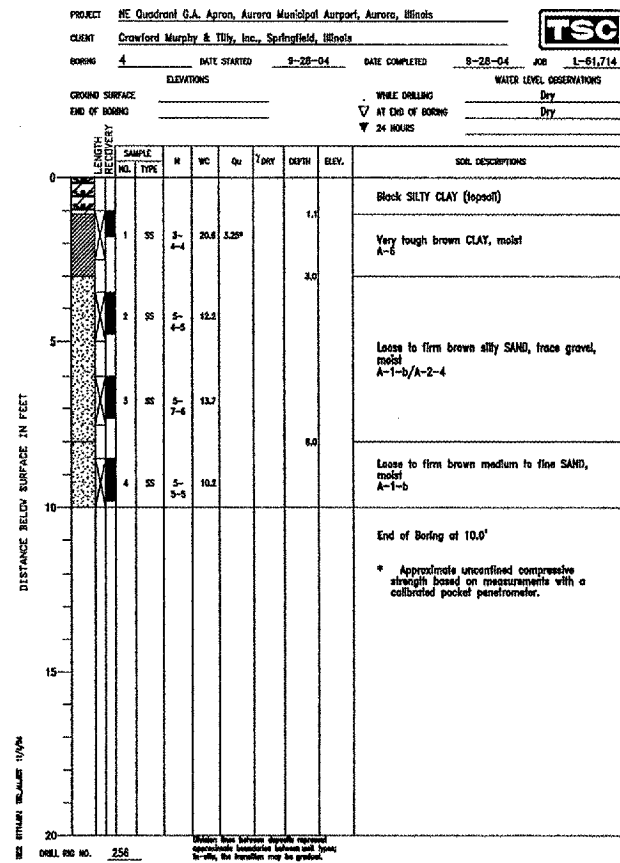
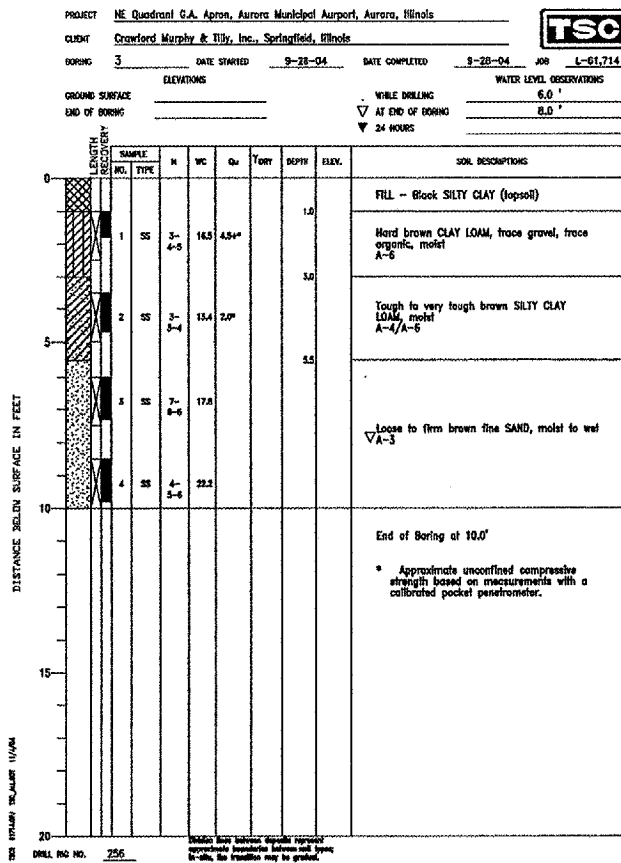
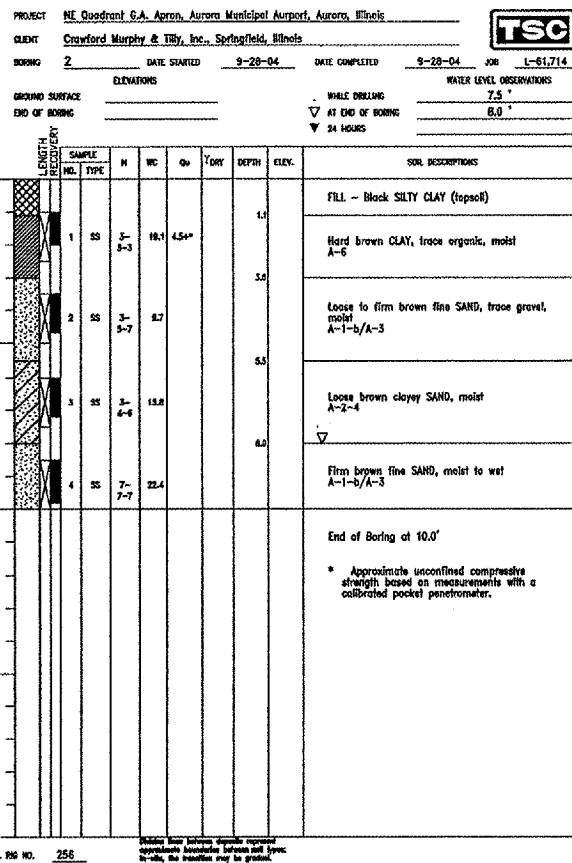
BORING NO.	NORTHING	EASTING	DEPTH	ELEVATION
B-1	1859265.3814	949289.6381	10'	-
B-2	1859490.3614	949286.6423	10'	-
B-3	1859637.3728	949061.2022	10'	-
B-4	1859739.3611	949209.8575	10'	-
B-5	1859937.3482	949057.2078	10'	-
B-6	1860114.3279	949204.8645	10'	-
B-7	1860224.6445	949603.4310	15'	-
B-8	1860048.6548	949905.8010	10'	-
B-9	1860204.6331	950353.7639	15'	-
B-10	1859959.3154	950707.0816	10'	-
B-11	1860077.4040	951002.9749	15'	-
B-12	1859288.2800	950485.3750	10'	-
B-13	1858744.2660	950446.0920	10'	-



REVISIONS		
NUMBER	BY	DATE

0 1 2
 THIS BAR IS EQUAL TO 2" AT FULL SCALE (34X22).

**AURORA MUNICIPAL AIRPORT
 AURORA, ILLINOIS
 CONSTRUCT NORTHEAST QUADRANT APRON,
 CONNECTING TAXIWAY AND RUNWAY 27 STOPWAY
 ENGINEERING INFORMATION - SHEET 1**



© Copyright GMT, Inc.
GMT
 CRAWFORD MURPHY & TILLY, INC.
 CONSULTING ENGINEERS
 License No. 184-006815

DESIGN BY:	ARM
DRAWN BY:	JRO
CHECKED BY:	MJS
APPROVED BY:	DKP
DATE:	01/26/05
JOB No:	04285-03
ILLINOIS PROJECT:	ARR-3442
A.I.P. PROJECT:	3-17-0003-B30
FINAL SUBMITTAL	
SHEET 38 OF 39 SHEETS	